

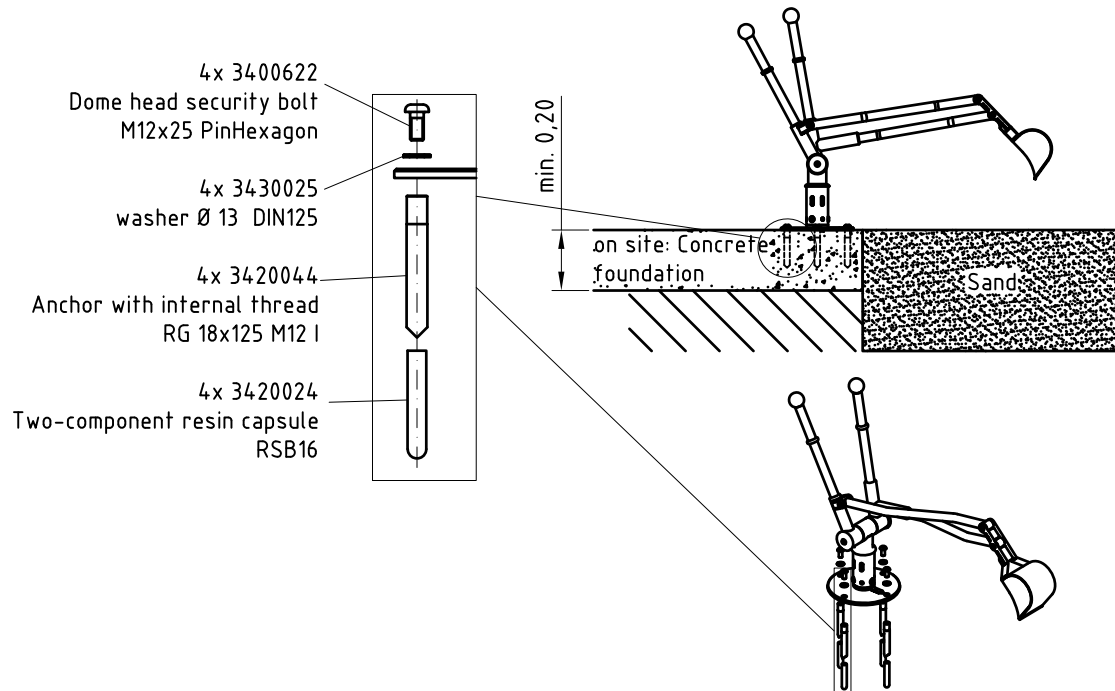
1. Assign location of equipment considering the space (falling space) requirements.
2. Fastening or foundation see detail "Foundation options as accessories".  
The fastening material depends on the foundation option selected.  
(Foundation option A or B must be ordered separately as an accessory).
3. The operating range of the inclusive sand digger is limited to a working angle of 90 degrees.  
When positioning the base, ensure that it is correctly aligned, see marking on the base.
4. After the anchor fastening with mortar cartridge has hardened or after the concrete foundations have set, the inclusive sand digger can be mounted.
5. Fill the playing area with a layer of sand of approx. 0.40 m.
6. Check all screw connections according to maintenance instructions after 4-5 weeks and screw down again if necessary.

Please take care that all special tools (e.g. special Allen key for secured Allen screws etc.) and all specific documents which are or may be useful for a safety management (e.g. invoice, delivery note, order acknowledgement, installation instructions, maintenance instructions) are forwarded to the responsible persons.

## Foundation option as accessories:

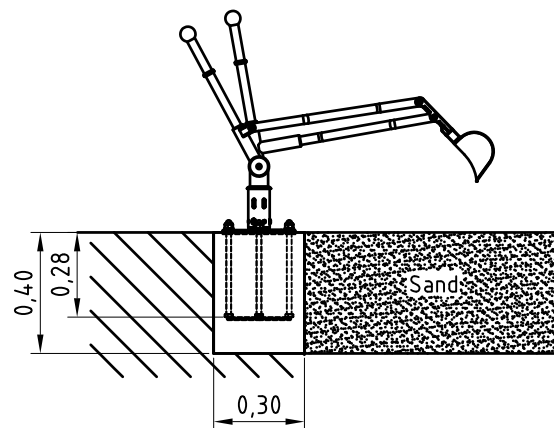
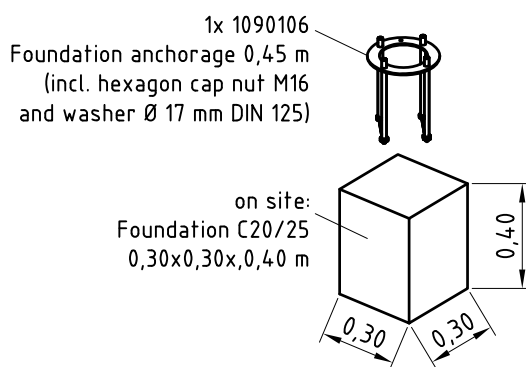
### Foundation option A)

Anchor fixing with mortar cartridge on on-site concrete slab

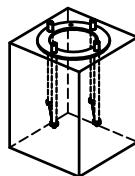


### Foundation option B)

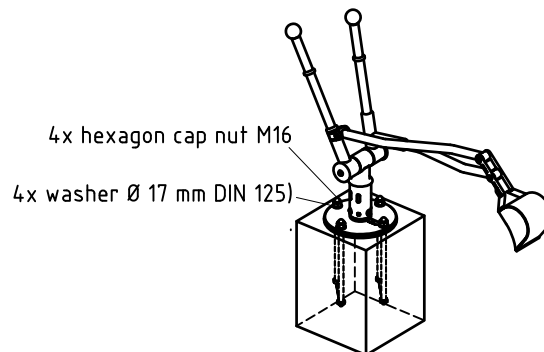
Attachment to steel foundation anchor with on-site concrete foundation



Lay the foundation with C20/25  
compressed concrete.  
Note the position of the threaded rods!  
See also "Positioning the base with  
correct alignment".

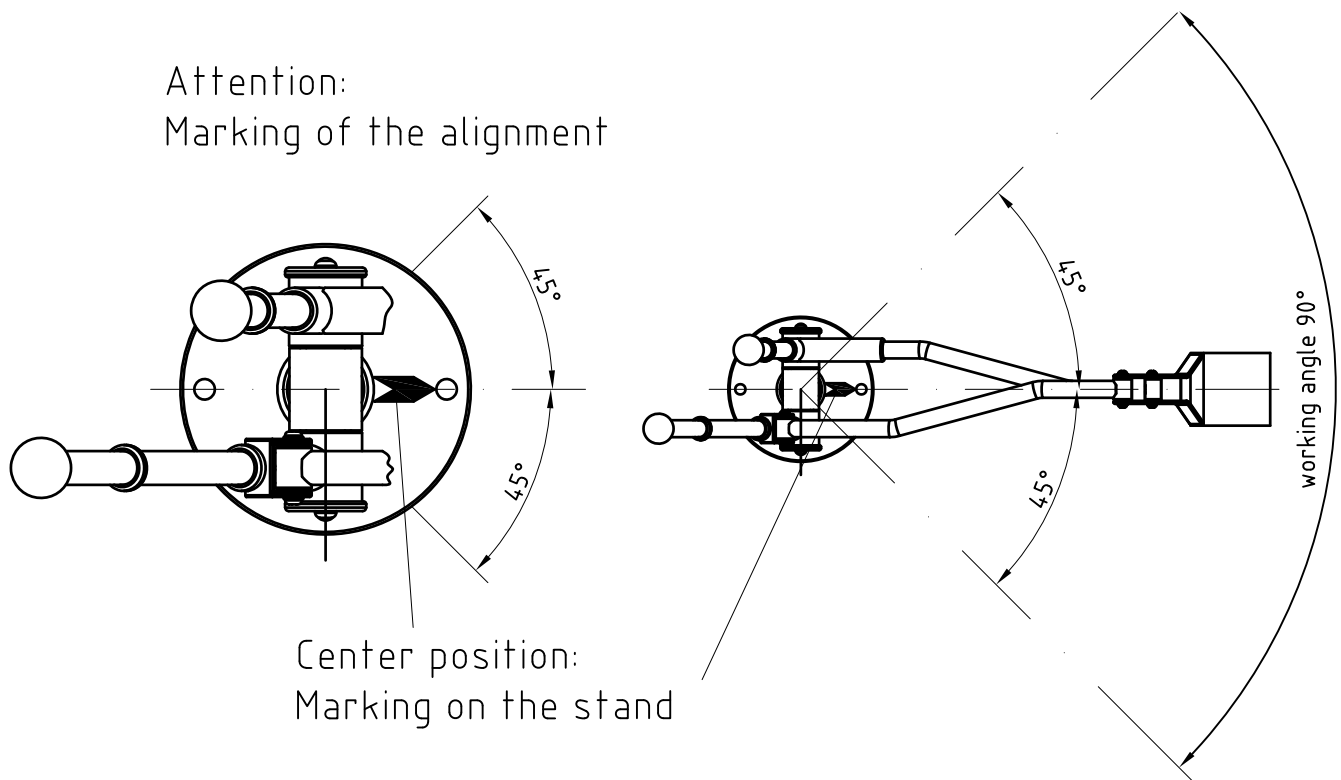


Insert foundation anchor into concrete  
according to the drawing and align with  
spirit level.



## Positioning the base with correct alignment:

Top view



# Space requirement and safety area:

Top view

Play area:  
Fill with sand  
Area  $0.71 \text{ m}^2$   
with layer height  $0.40 \text{ m}$ :  
Sand quantity approx.  $0.28 \text{ m}^3$

