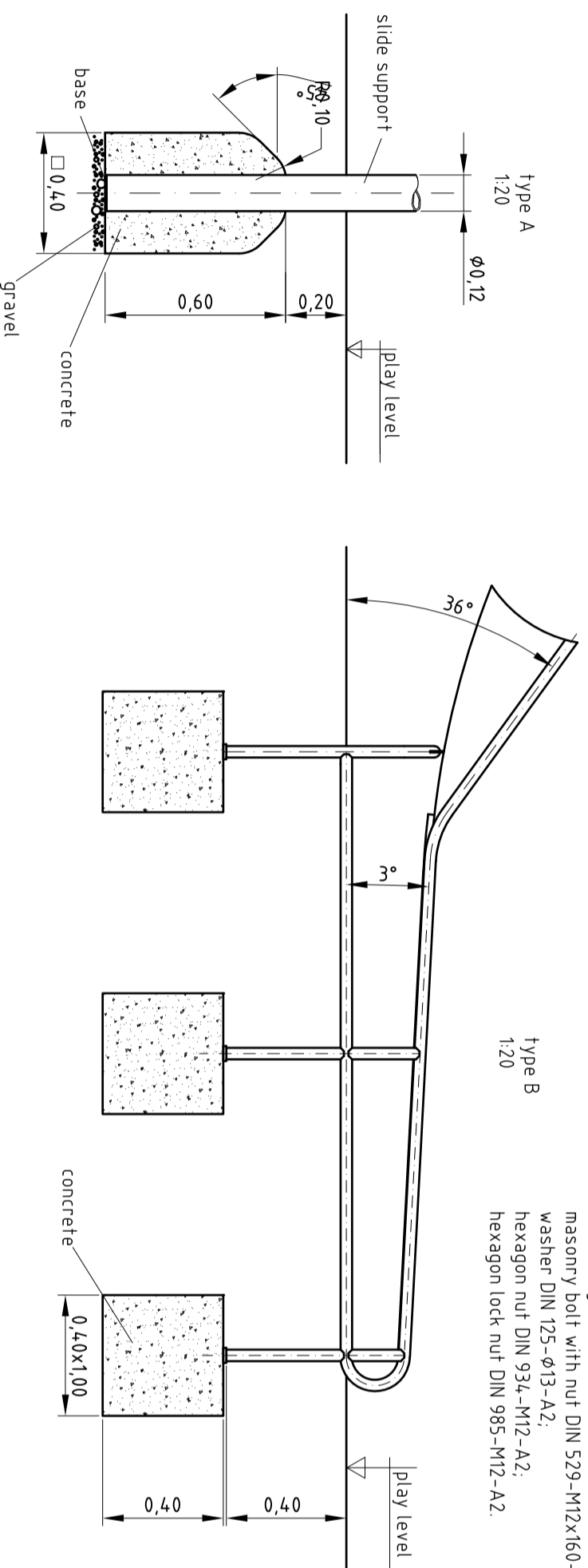
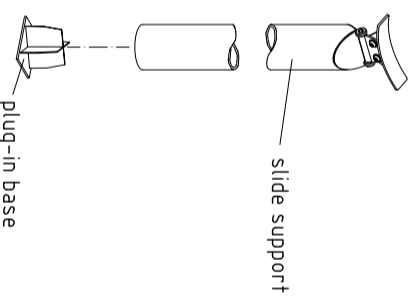


dimension mark - maximum free height of fall

Plug-in base for slide support
1:20

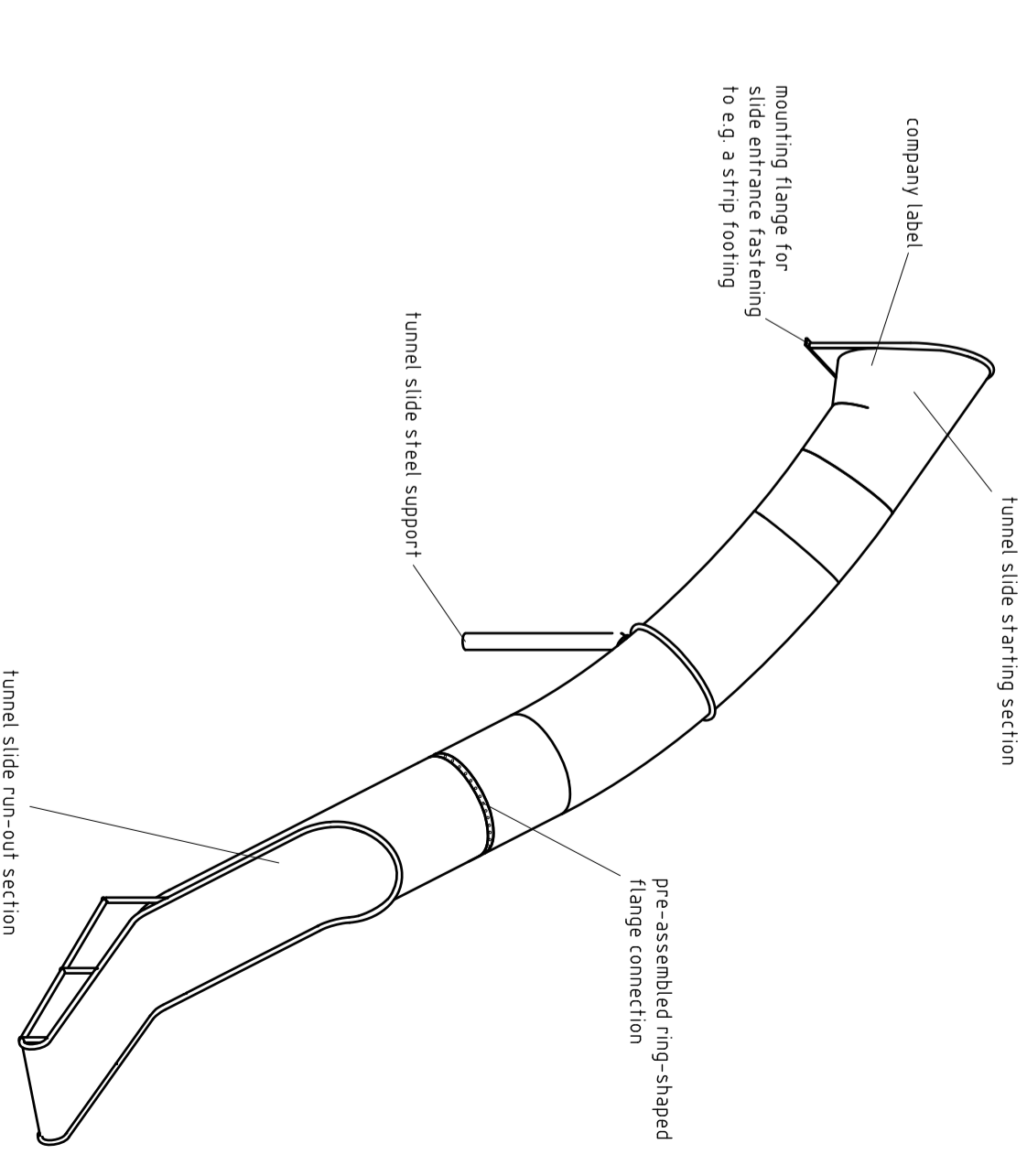
To be mounted as follows:
If necessary, shorten stainless steel slide support to the required length (with adequate appliance e.g. angle grinder). Insert base from below into the stainless steel post.



Masonry bolts for concrete foundations prepared on-site

6 x screw connection


consisting of:
- masonry bolt with nut DIN 529-M12x160-zinc-plated;
- washer DIN 125-φ13-A2;
- hexagon nut DIN 934-M12-A2;
- hexagon lock nut DIN 985-M12-A2



- Some additional instructions for the installation of K&K Tunnel slides
- The specified installation height of the slide must be observed (distance between play level and bottom edge of the slide entrance flange).
 - The starting section of the chure must be installed horizontally.
 - All (straight, curved or waved sections) of the slide assembly must be installed with the correct inclination (measured in the centre of the slide trough). This does not apply to the hill slide run-out section.
 - The slide support has to be installed such that it effectively supports the slide, that the curved sections are properly positioned without a deviation from the inclination specified.
 - The tunnel slide run-out section must be installed with an inclination of 3°.

- Assign a location for the slide considering the space requirements/impact area. Slide direction recommended: north-east or in half-shade of trees.
- Excavate soil for foundations according to drawing. Please note: To achieve maximum stability and a safe installation, a moderate level of soil solubility is required.
- Pour in a drain layer of gravel of approx. 10 cm thickness between the bottom of the support post and plain base of foundation.
- Use e.g. a lifting gear to carry the slide to the planned position. Align it considering all additional details mentioned and support it (if necessary) keeping in mind all safety-relevant rules.
- For slide entrance fastening, the bottom flange is equipped with two square holes for M16 screws, it can be used as a drilling jig.
- Grout foundations with compressed concrete C20/25 and insert the anchor screws provided for the run-out section (also see detail B).
Also erect the steel support post and support it during curing time.
- For screw connection details, see enclosed list.
- Release for play after concrete foundations have set.
- Cover the foundations with appropriate surfacing material which meets the requirements for impact attenuation so that the critical fall height of the surfacing is equal to, or greater than, the free height of fall of the equipment (acc. to EN 1176-1). The run-out section fall zone must have surfacing with a critical fall height of at least 1000mm and shall be provided to at least 2000 mm beyond the run-out section (acc. to EN 1176-3).
- According to maintenance instructions, check all screw connections after 4-5 weeks and re-tighten, if necessary.

Please ensure that all special tools and specific documents which are or may be useful for safety management (e.g. invoice, delivery note, order acknowledgement, installation instructions, maintenance instructions) are forwarded to the persons responsible.

| | | |
|--|--|--|
|  <p>Kaiser & Kühne Freizeitgeräte GmbH D-27324 Eysstrup T +49 4254 / 93 15 0 F +49 4254 / 93 15 24</p> | <p>Datei/Name</p> <p>Gez. 0049-10-GE</p> | <p>Item No.</p> <p>941000030</p> |
| | <p>Scale</p> <p>1:50 / A2</p> | <p>Designation</p> <p>K&K Tunnel slide (4,00)</p> |

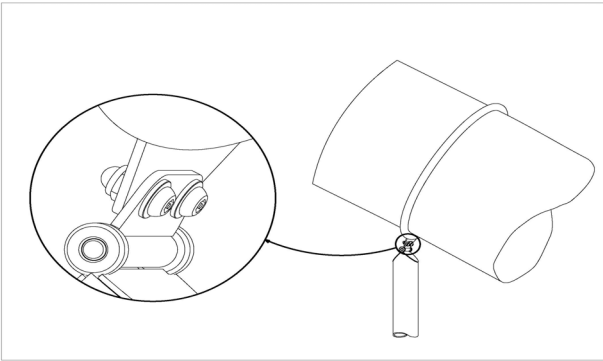
EN 1176

Item: **94100030**
 K&K Tunnel slide 30°/36°
 Location:

Order: 1292939

Building Project:

1 x SFAS1070005 Slide support post below tunnel slide



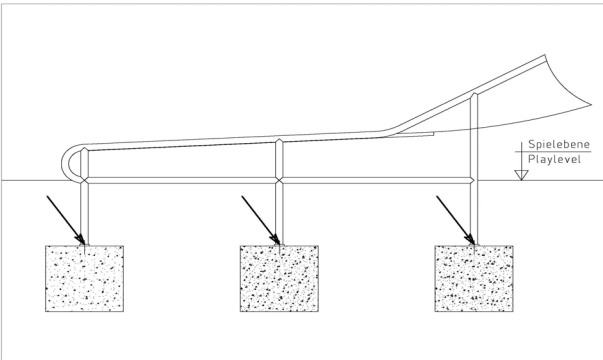
| per SC | Total | K&K-Item | Marking |
|--------|-------|----------|---|
| 2 x | 2 x | 3430025 | Washer Ø 13 DIN125 A2 |
| 2 x | 2 x | 3400622 | Dome head security bolt M12 x 25 PinHexagon A2 safety coated thread |

1 x SFWZ0000005 Allen key security hex socket AF8



| per SC | Total | K&K-Item | Marking |
|--------|-------|----------|-----------------------------------|
| 1 x | 1 x | 3490057 | Allen key security hex socket AF8 |

1 x SFAS1070011 (Short) Tunnel slide run-out section stone bolt assembly



| per SC | Total | K&K-Item | Marking |
|--------|-------|----------|--|
| 6 x | 6 x | 1070365 | Set of stone bolts for slide run-out section M12x160 |

1 x SFWZ0000014 Lubricating metal, bag (4 g)



| per SC | Total | K&K-Item | Marking |
|--------|-------|----------|----------------------------------|
| 1 x | 1 x | 5300024 | Metaflux fitting lubricant 2x4 g |