

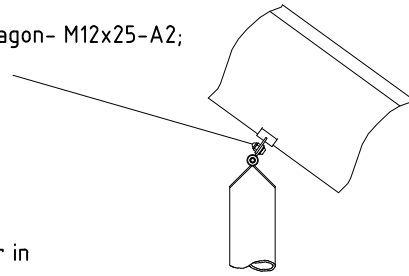
2 x screw connection for slide support

1:20

consisting of:

pan-head screw-pin hexagon- M12x25-A2;

washer DIN 125-13-A2;



Installation of K&K Bedway slides (flange fastening):

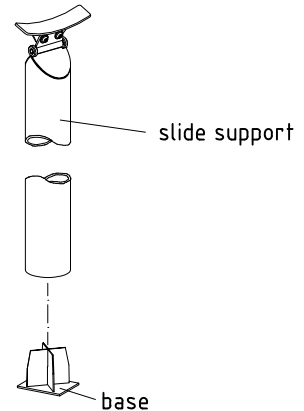
1. Assign a location for the bedway slide considering the space requirements/impact area. Slide direction recommended: South-east or in half-shade of trees.
2. Excavate foundation hole for run-out section according to drawing. To achieve maximum stability and a safe installation, a moderate level of soil solubility is required.
3. Use e.g. lifting gear to carry the bedway slide to the mounting place intended and align it (considering all additional details mentioned). Fasten flange of slide entrance by using the two holes for M12 screws.
4. Grout foundation with compressed concrete C20/25 and insert the anchor screws provided (also see detail).
5. Release for play after concrete foundation has set. Cover the foundation with appropriate surfacing material.
6. According to maintenance instructions, check all screw connections after 4-5 weeks and retighten, if necessary.

plug-in base for slide support

1:20

to be mounted as follows:

If necessary, shorten stainless steel slide support to the required length (with adequate appliance e.g. angle grinder). Insert base from below into the stainless steel post.



Please ensure that all special tools and specific documents which are or may be useful for safety management (e.g. invoice, delivery note, order acknowledgement, installation instructions, maintenance instructions) are forwarded to the persons responsible.

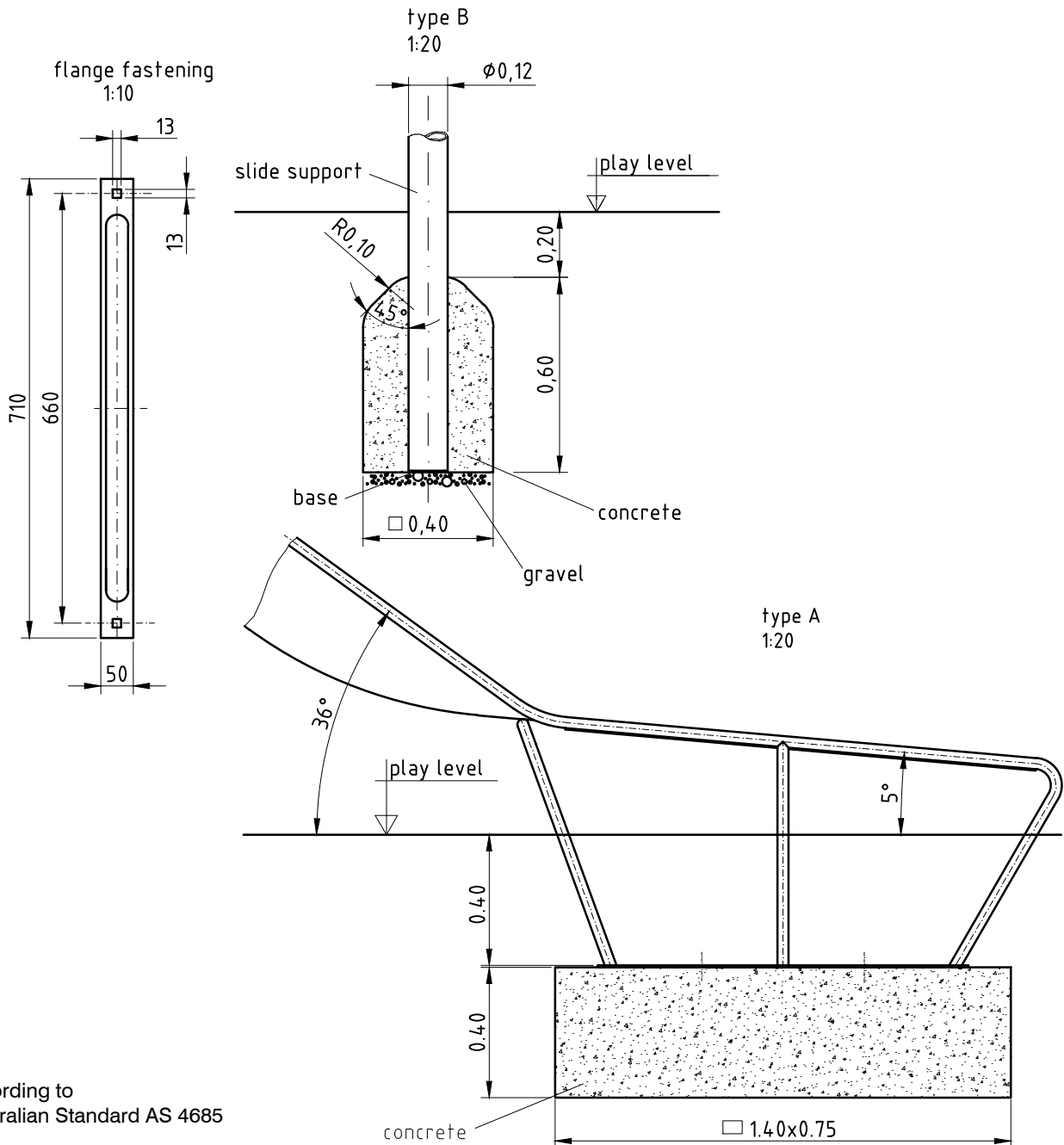
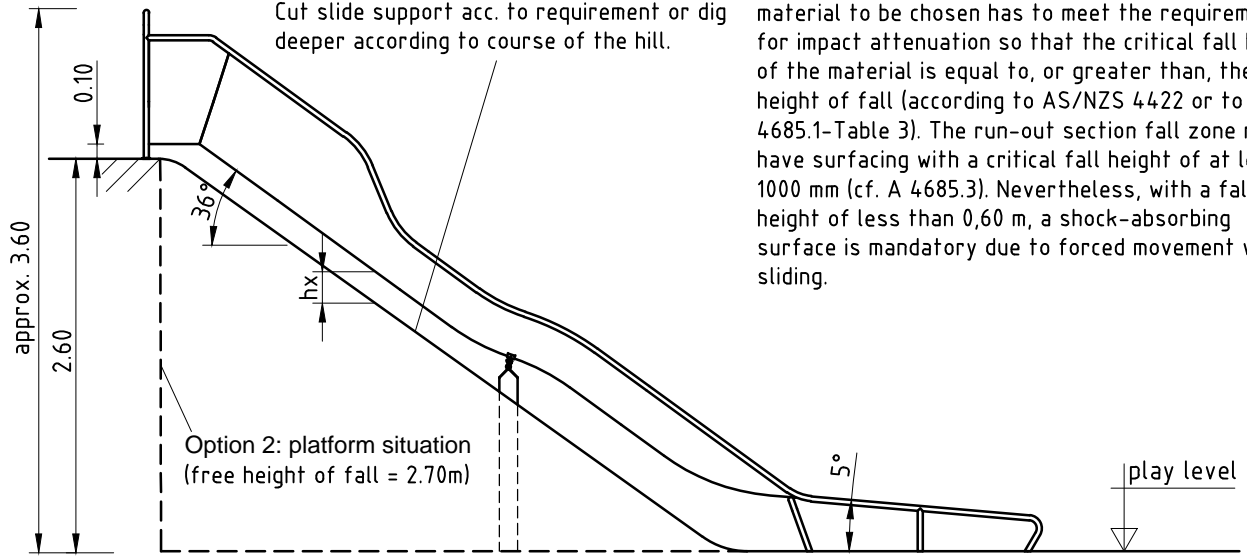
Some additional instructions for the installation of K&K Bedway slides

- The specified installation height of the slide must be observed (distance between play level and bottom edge of the fastening flange).
- The starting section of the chute must be installed horizontally.
- All (straight, curved or wavy sections) of the slide assembly must be installed with the correct inclination (measured in the centre of the slide trough). This does not apply to the run-out section.
- The slide support has to be installed such that it effectively supports the slide, that the curved or wavy sections are properly positioned without a deviation from the inclination specified.
- The run-out section must be installed with an inclination of 5°.

according to Australian Standard AS 4685

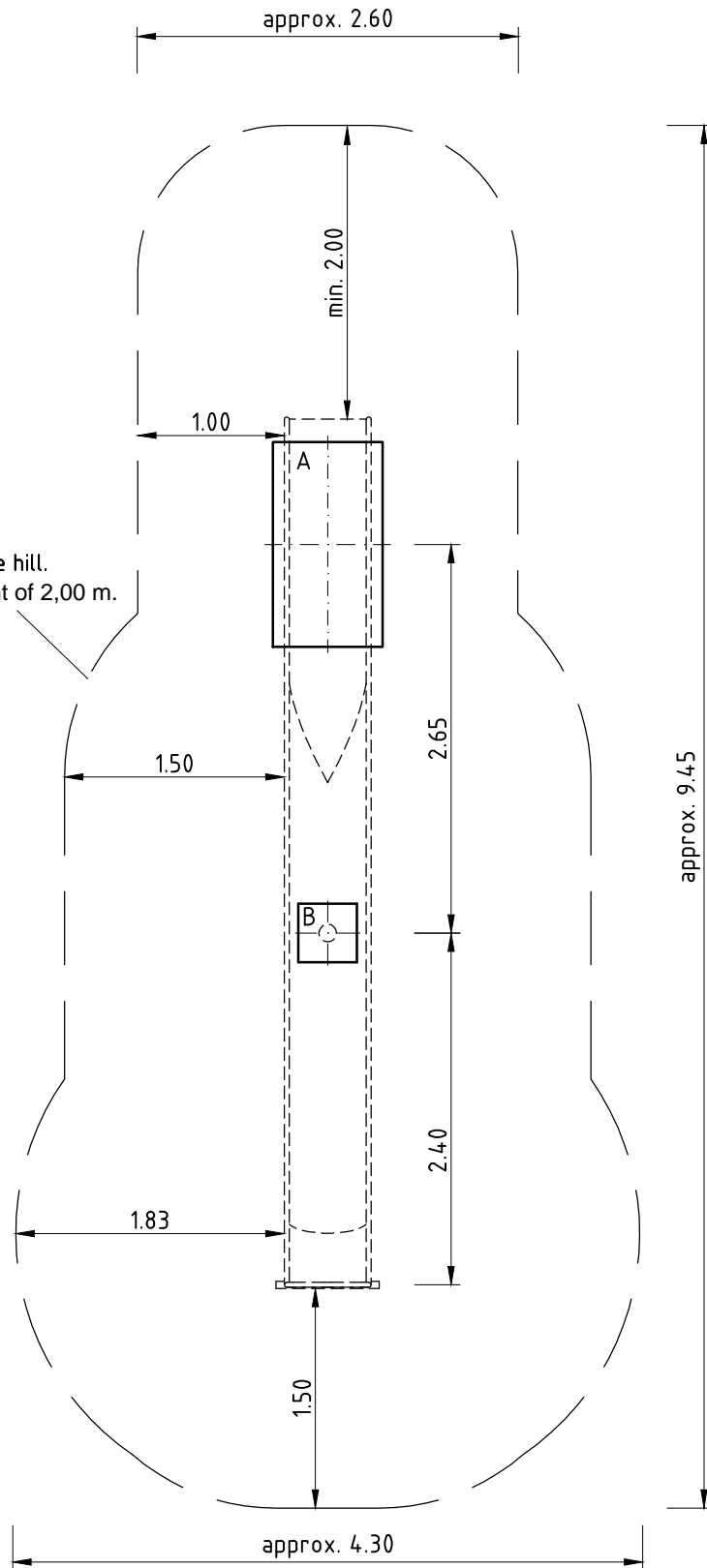
Option 1: hillside situation
 Exemplified course of the hill
 Please consider planning specification
 and/or the instructions of architect on site.
 Cut slide support acc. to requirement or dig
 deeper according to course of the hill.

Depending on the site profile, the free fall height (hx) results from the vertical distance between the bottom of chute and the top of soil; the surfacing material to be chosen has to meet the requirements for impact attenuation so that the critical fall height of the material is equal to, or greater than, the free height of fall (according to AS/NZS 4422 or to AS 4685.1-Table 3). The run-out section fall zone must have surfacing with a critical fall height of at least 1000 mm (cf. A 4685.3). Nevertheless, with a fall height of less than 0,60 m, a shock-absorbing surface is mandatory due to forced movement when sliding.



according to
 Australian Standard AS 4685

The size of the impact area depends on the course of the hill. Example of a max. fall height of 2,00 m.



according to Australian Standard AS 4685

Installation

Item No. 0-41426-001

Description K&K Bedway slide (2,60)

Scale 1:50

Date 12/15 EB

Page 3/3

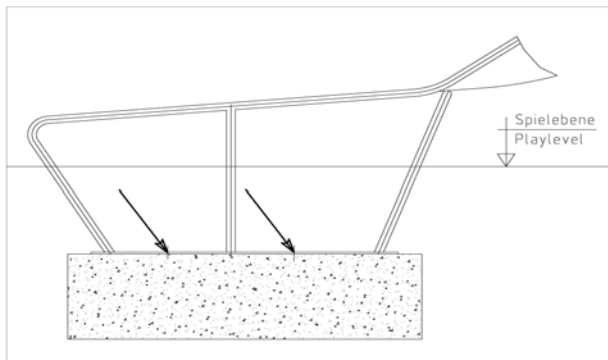
Item: 0-41426-001
 K&K Slide bedway (2,60)

Order:

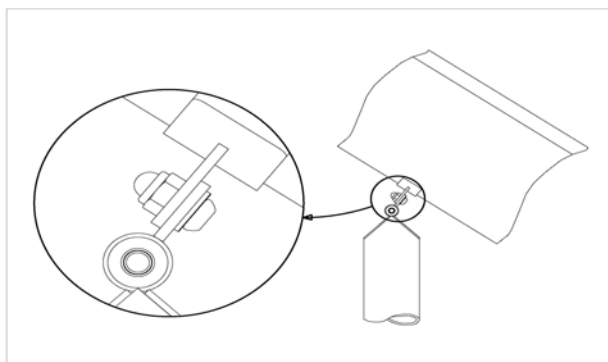
1297582

Location:

Building Project:

1 x SFAS1070008 Slide run-out section (midi) stone bolt assembly


per SC	Total	K&K-Item	Marking
4 x	4 x	1070365	Set of stone bolts for slide run-out section M12x160

1 x SFAS1070004 Slide support post below hill slide


per SC	Total	K&K-Item	Marking
2 x	2 x	3430025	Washer Ø 13 DIN125 A2
2 x	2 x	3400622	Dome head security bolt M12 x 25 PinHexagon A2 safety coated thread

1 x SFWZ0000005 Allen key security hex socket AF8

per SC	Total	K&K-Item	Marking
1 x	1 x	3490057	Allen key security hex socket AF8


1 x SFWZ0000014 Lubricating metal, bag (4g)

per SC	Total	K&K-Item	Marking
1 x	1 x	5300024	Metaflux fitting lubricant 2x4 gr.

