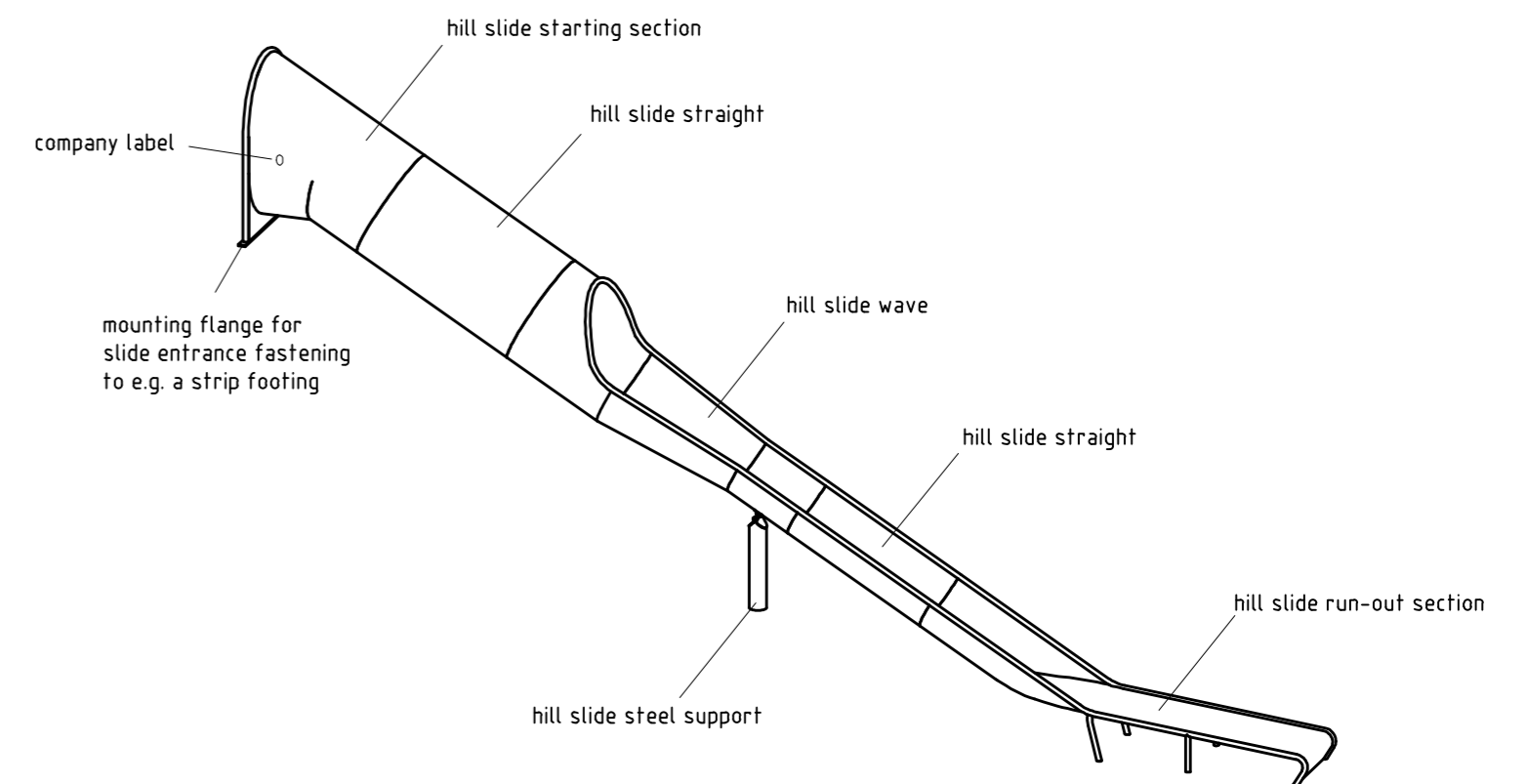
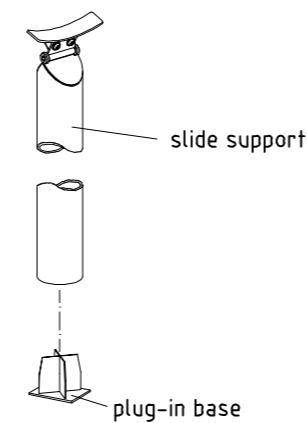
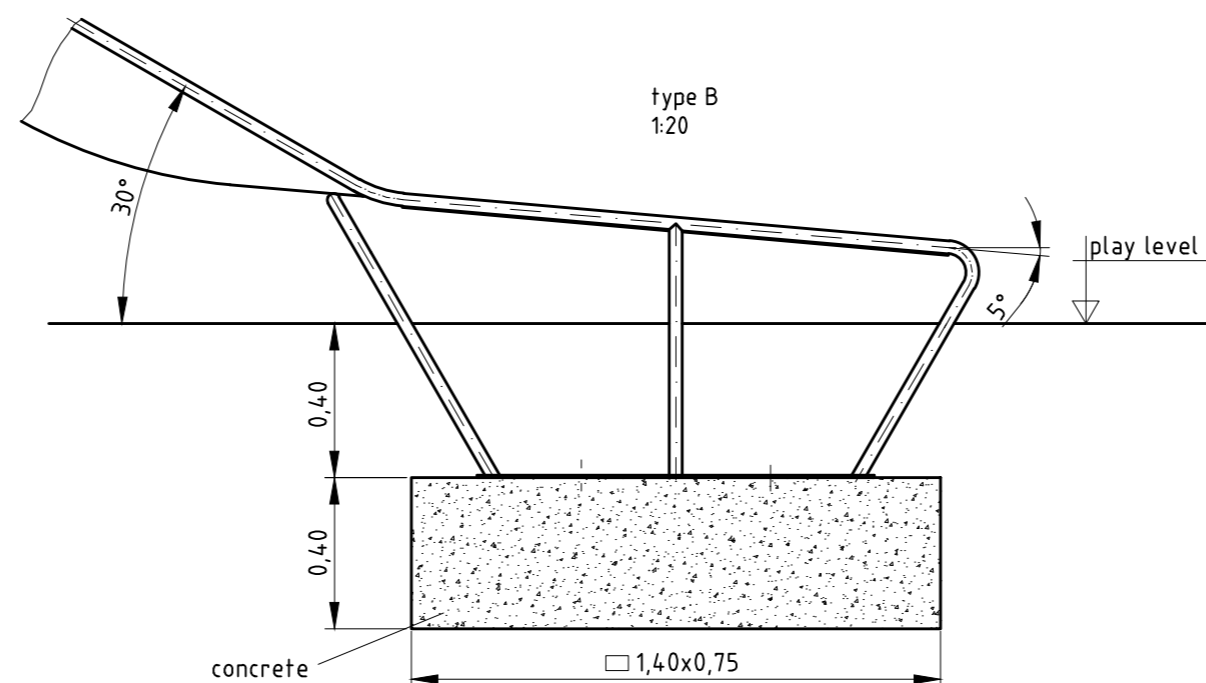
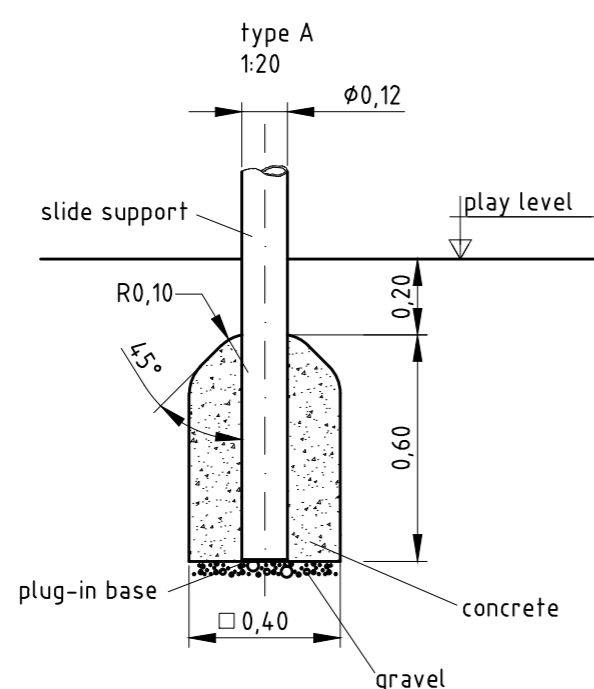
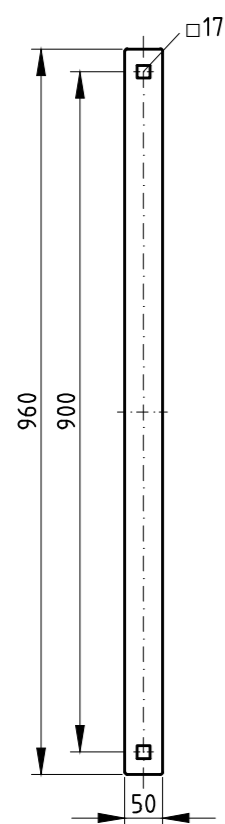


**Plug-in base for slide support
1:20**

to be mounted as follows:
If necessary, shorten stainless steel slide support to the required length (with adequate appliance e.g. angle grinder).
Insert base from below into the stainless steel post.



mounting flange for slide entrance fastening
1:10



Some additional instructions for the installation of K&K slides

- The specified installation height of the slide must be observed (=3,00m, vertical distance from run-out section play level to bottom edge of the mounting flange).
- The starting section of the chute must be installed horizontally.
- All straight sections of the slide assembly must be installed with the correct inclination (=30°, measured in the centre of the slide trough). This does not apply to the waved section and the run-out section.
- The run-out section must be installed with an inclination of 5°.
- The slide support has to be installed such that it effectively supports the slide, that the corresponding sections are properly positioned without a deviation from the inclination specified.

1. Assign a location for the slide considering the space requirements/impact area.
Slide direction recommended: north-east or alignment in half-shade of trees.
2. Excavate foundation holes according to drawing. To achieve maximum stability and a safe installation, a moderate level of soil solubility is required.
3. Pour in a drain layer of gravel of approx. 10 cm thickness between the bottom of the post and plain base of foundation.
4. Use e.g. lifting gear to carry the slide to the intended mounting place. For a correct alignment, please observe the additional details given. Fasten flange of slide entrance section by using the two holes for M16.
For further screw connections, see details in attached list.
5. Grout foundations with compressed concrete C20/25 and insert the stone bolts provided for the run-out section.
6. Release for play after concrete foundations have set. Cover the foundations with appropriate surfacing material.
7. According to maintenance instructions, check all screw connections after 4-5 weeks and retighten, if necessary.

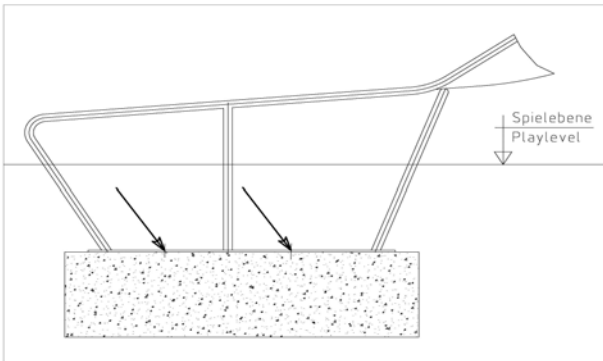
Please take care that all special tools (e.g. Allen key) and all specific documents which are or may be useful for a safety management (e.g. invoice, delivery note, order acknowledgement, installation instructions, maintenance instructions) are forwarded to the responsible persons.

 Kaiser & Kühne Freizeitgeräte GmbH D-27324 Eystrup Telefon 04254 / 93150 Telefax 04254 / 931524	Date/Name Drawn by BE 20/07/2015	Item No. 941001715
	Scale 1:50 / A2	Title K&K Tunnel hill slide 30°; 3,00 m height
	Scale 1:50 / A2	Drawing Installation

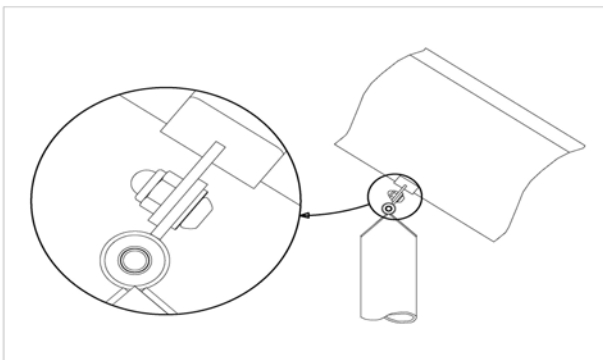
Item: 941001715
Order:

1291566

K&K Tunnel Hill slide 30°, height of slide 3,00 m

Location:
Building Project:
1 x SFAS1070008 Slide run-out section (midi) stone bolt assembly


per SC	Total	K&K-Item	Marking
4 x	4 x	1070365	Set of stone bolts for slide run-out section M12x160

1 x SFAS1070004 Slide support post below hill slide


per SC	Total	K&K-Item	Marking
2 x	2 x	3430025	Washer Ø 13 DIN125 A2
2 x	2 x	3400622	Dome head security bolt M12 x 25 PinHexagon A2 safety coated thread

1 x SFWZ0000005 Allen key security hex socket AF8

per SC	Total	K&K-Item	Marking
1 x	1 x	3490057	Allen key security hex socket AF8


1 x SFWZ0000014 Lubricating metal, bag (4g)

per SC	Total	K&K-Item	Marking
1 x	1 x	5300024	Metaflux fitting lubricant 2x4 gr.

