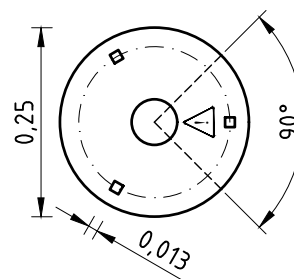
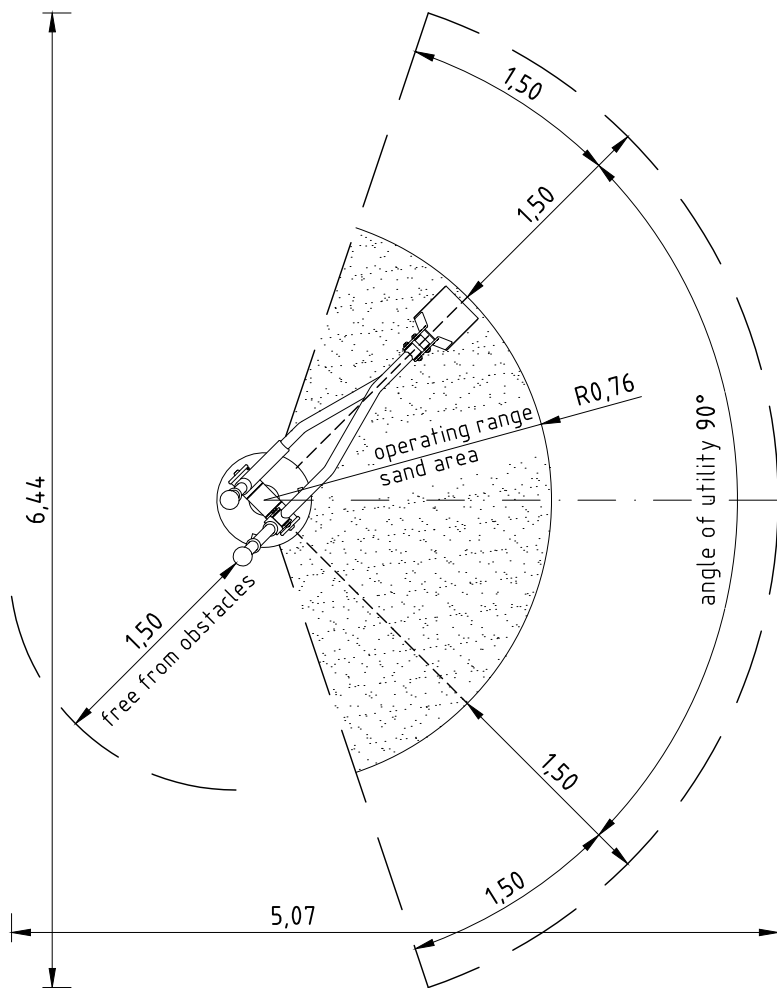


3x dome-head security screw M12x25-A2

ring-shaped flange \varnothing 250 mm with 3 square holes (13 mm)

3x Fischer® threaded rod RG MI 18x125 M12-A4;

3x Fischer® mortar cartridge RSB 16



Before installing the foundation anchorage, please keep an eye on the check mark/label on top of the flange!

With the bucket at its maximum operating range, the circumference of the safety zone increases by 1,50 m.

1. Assign a location for the equipment considering the space requirement.
2. Place the sand digger onto the concrete slab and align it.
Fastening material as mentioned above is included with delivery. Proceed according to the manufacturer's prescriptions. The flange at the bottom end of the tube may serve as a drilling jig.
3. **The angle of utility of the digger is limited to 90 degrees! Before positioning the foundation anchorage, keep an eye on the correct orientation of the digger! Respect check mark on the flange!**
4. After curing time, the digger can be installed.
5. Cover the playing area with a sand layer of 0,40 m thickness.
6. Check all screw connections according to maintenance instructions after 4-5 weeks and retighten them, if necessary.

Please take care that all special tools (e.g. special Allen key for secured Allen screws etc.) and all specific documents which are or may be useful for a safety management (e.g. invoice, delivery note, order acknowledgement, installation instructions, maintenance instructions) are forwarded to the responsible persons.