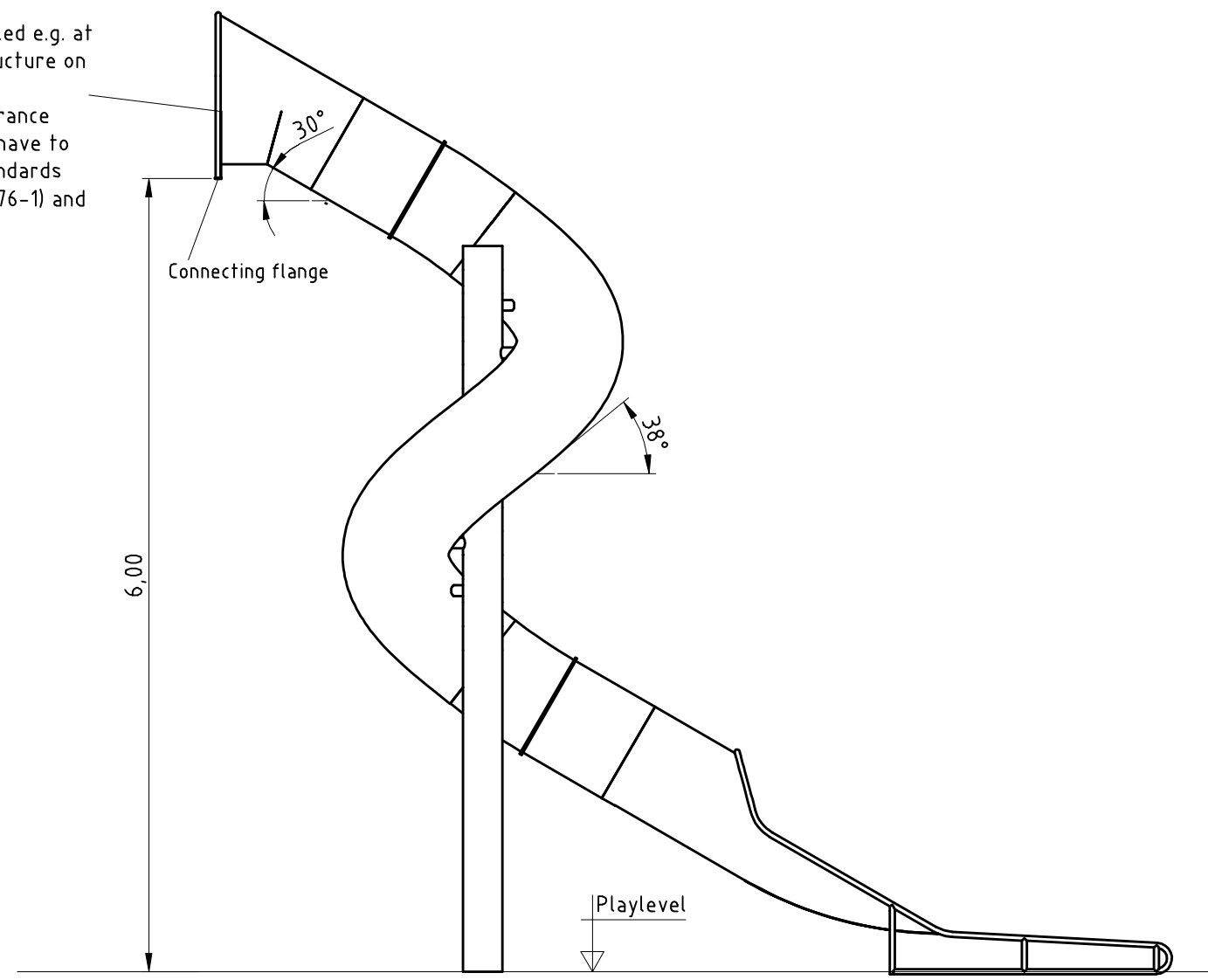
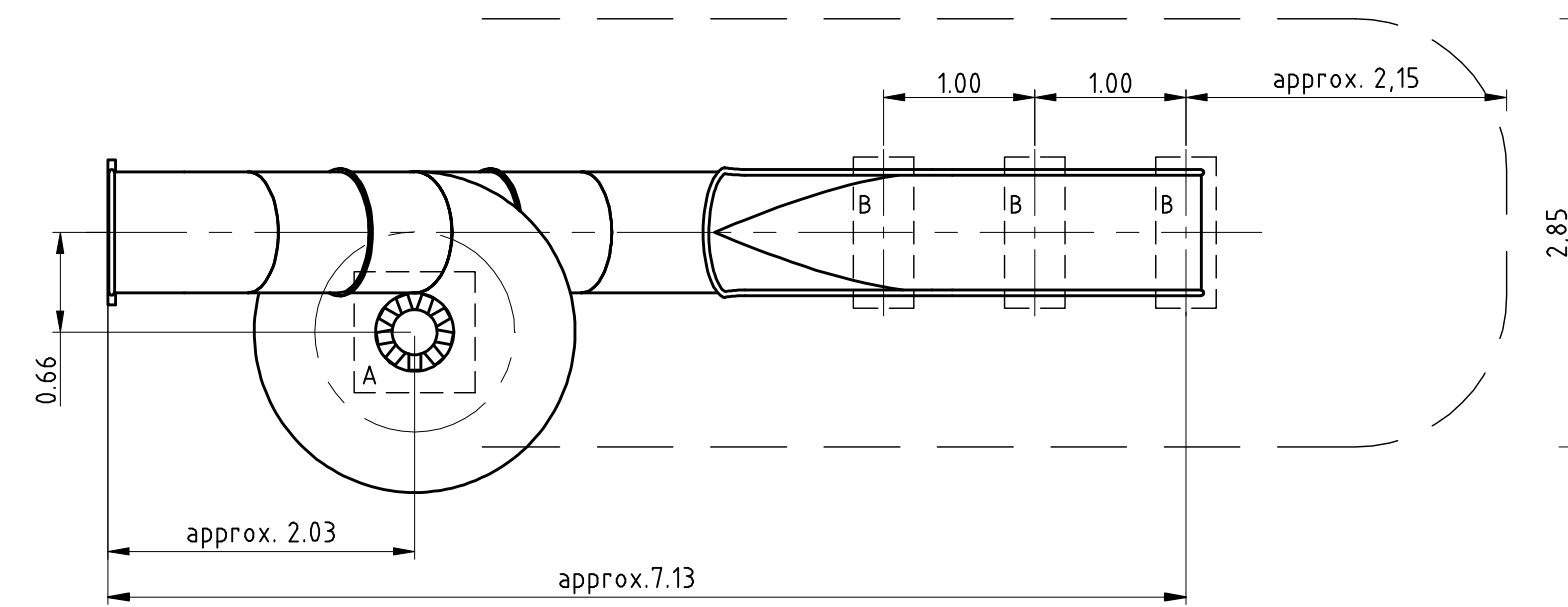
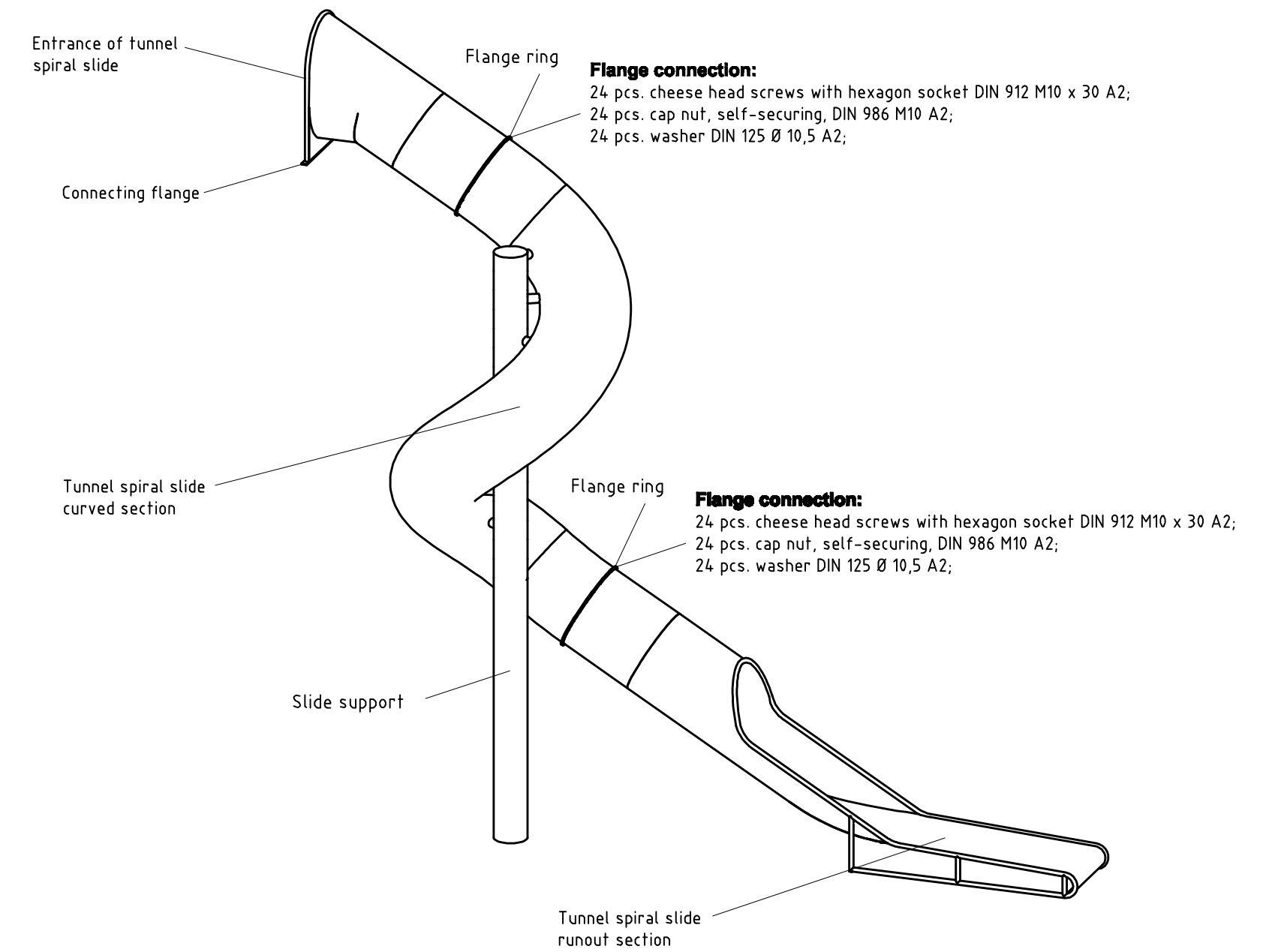
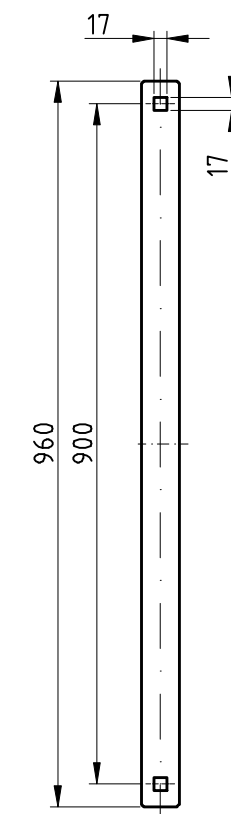


Slide entrance, intended to be installed e.g. at a building, a balustrade or a playstructure on site.
 • All methods, to build in the slide entrance framework into any opening on site, have to be done in consideration of valid standards concerning play equipment (e.g. EN 1176-1) and building regulations.



Connecting flange
 scale 1:10
 (all dimensions in millimeter)



Please note:
 The K&K product range as a whole has been designed according to the European Standard EN 1176. Neither CPSC nor ASTM F1487 were taken into consideration, thus, due to our nesience of the detailed requirements of these regulations, we can neither affirm nor deny the compliance with the mentioned Standards. Therefore, by way of this installation instruction, we exclusively refer to the European Standard EN 1176.

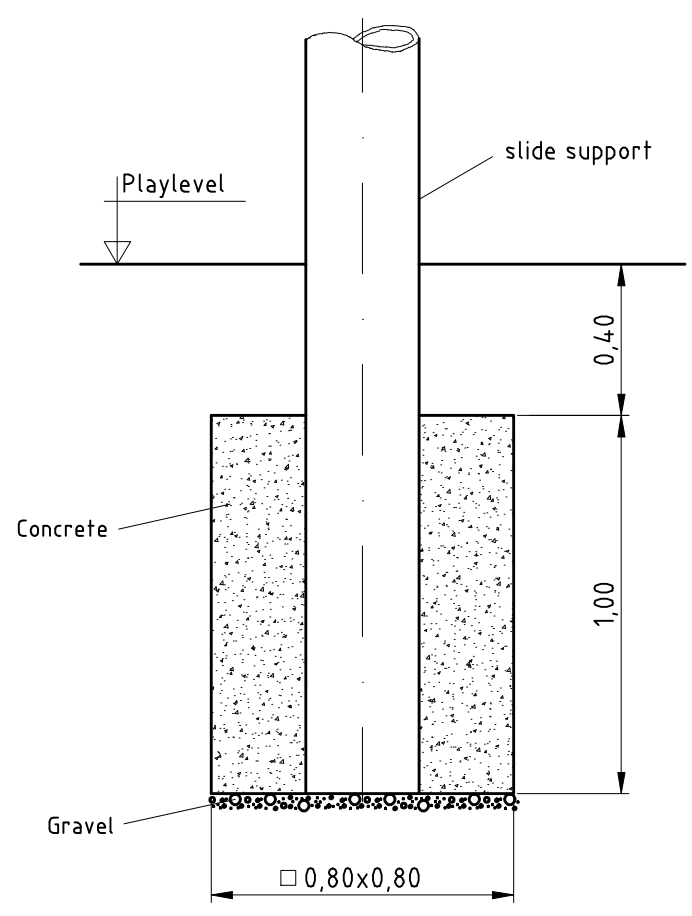
Installation of tunnel spiral slide (flange fastening)

1. Assign location of tunnel spiral slide considering the space requirement/impact area. Recommended direction of slide runout section: North-east or in half-shade of trees.
2. Excavate foundation holes for slide support and runout section acc. to drawing.
3. Screw up tunnel spiral slide curved section with tunnel spiral slide entrance, having brought the marks (scores) on flange rings to coincidence (24 screws M10 x 30). Use e.g. lifting gear to carry the tunnel slide to the intended mounting place. Screw up flange of tunnel entrance using the 2 holes for M16. Screw up tunnel slide runout section with tunnel spiral slide curved section having brought the marks (scores) on flange rings to coincidence (24 screws M10 x 30). Screw connections see details on list of screw cases as annexed.
4. Grout in above mentioned (see 2.) foundations acc. to drawing with compressed concrete C20/25 and cover with a surface which shall meet the requirements for impact attenuation so that the critical height of the surfacing shall be equal to or greater than the free height of fall of the equipment (acc. to EN 1176-1 and EN 1176-3). As slides causes a forced movement on the body of the user, there shall be impact attenuating surfacing over the entire impact area, even if the free height of fall is under 0,60m

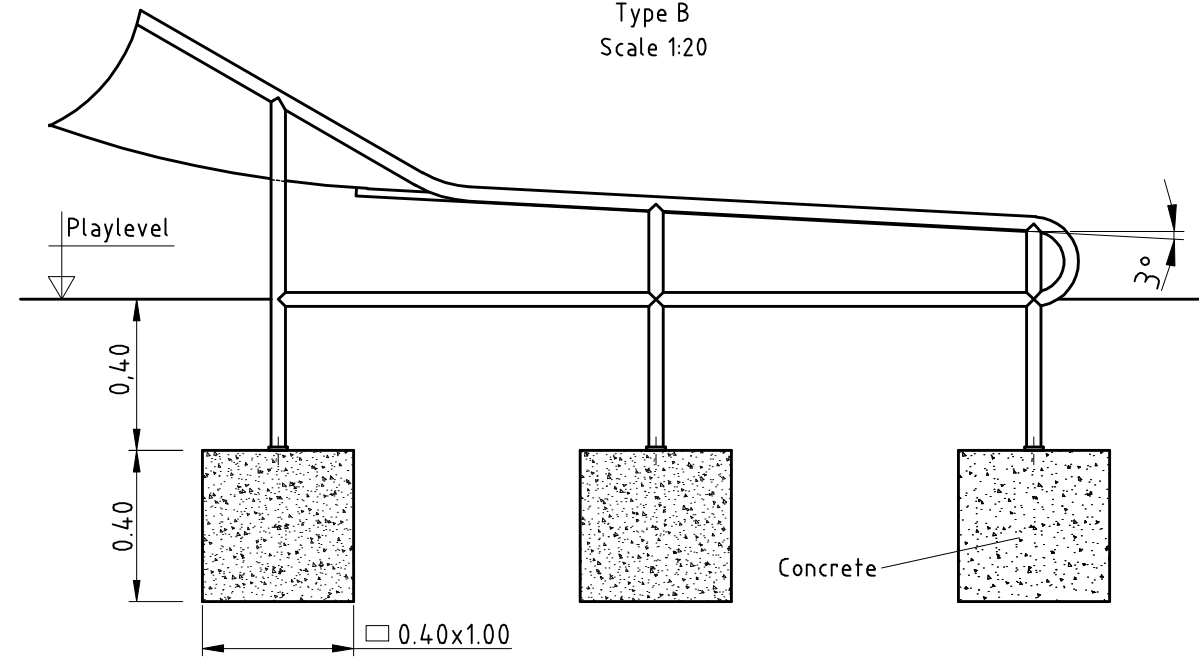
Some additional instructions for the installation of K&K tunnel slides

- It is imperative that the instructions below be followed:
- The specified installation height of the slide (6,00m) must be observed.
 - All sections (straight and curved sections) of the slide assembly must be installed at the correct inclination (30° as measured from the centre of the slide trough in the straight sections, 38° in the curved section). Exception to this is the tunnel slide runout section.
 - The starting section of the slide entrance must be installed horizontally.
 - The tunnel slide run out section is to be installed with an inclination of 3°.

Type A
 Scale 1:20



Type B
 Scale 1:20



<p>© 2014 Kaiser & Kühne Freizeitgeräte GmbH D-27324 Eystруп Telefon 04254 / 93150 Telefax 04254 / 931524</p>	Date/Versie	Item-No.
	02z. 18/08/14 KR	941000210
	Descriptio	K&K spiral slide
	Scale	Drawing
	1:50 / A2	Installation