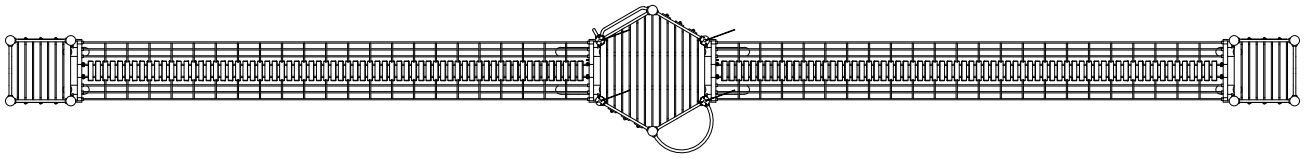
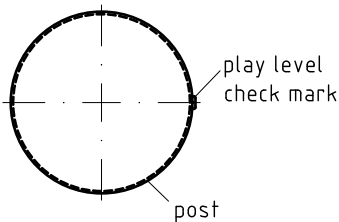


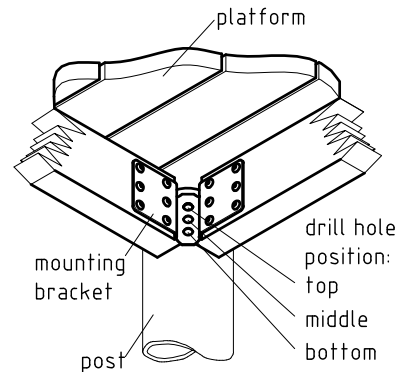
platform orientation
1:100



detail of check mark
1:5



platform fastening
1:10



1. Assign a device location considering the space requirement (impact area).
2. Excavate soil for foundations, according to drawing.
Please note: To achieve maximum stability and a safe installation, a moderate level of soil solubility is required.
3. Pour in a drain layer of gravel of approx. 10 cm thickness between the bottom of the posts and plain base of foundation.
4. Insert reinforcing steel into the corresponding holes of the posts.
5. Place posts type A according to the corresponding number (see foundation layout) into the respective foundation hole. Play level mark (=aluminium blind rivet) complies with the installation depth. Align every post by means of the play level mark facing into the same direction (see detail or foundation layout).
- 6. For installation of the pre-assembled components and/or single parts, the screws slightly have to be lubricated with installation paste!**
Screw together platforms and posts by using the middle hole in the mounting brackets.
Tighten all screws after having aligned all components.
Screw connections see details in attached list.
7. Grout foundations with compressed concrete C20/25, chamfer and round off the edges, cover the foundations with a surface which meets the requirement for impact attenuation so that the critical fall height of the surfacing is equal to, or greater than, the free height of fall of the equipment (acc. to EN 1176-1).
8. According to maintenance instructions, check all screw connections after 4-5 weeks and retighten, if necessary.

Please ensure that all special tools supplied (e.g. Allen key for secured Allen screws etc.) and all specific documents which are or may be useful for safety management acc. to EN 1176-7 (e.g. invoice, delivery note, order acknowledgement, installation instructions, maintenance instructions) are forwarded to the persons responsible.

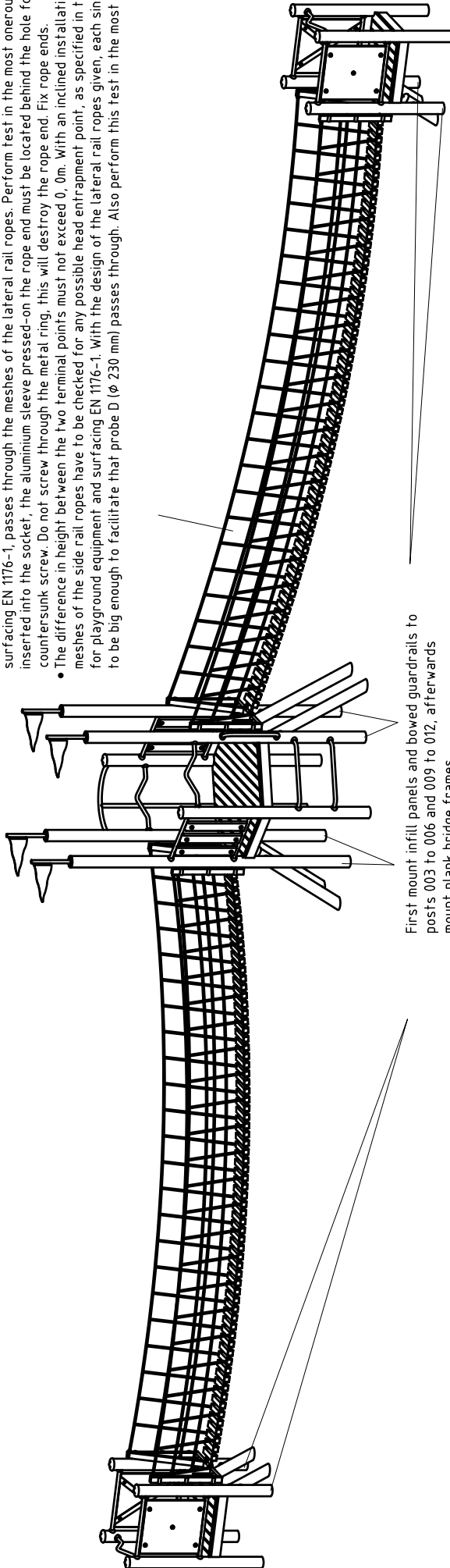
Installation instructions for plank bridge

(Screw connections of lateral rail ropes/net barrier to bridge frame see details in attached list)

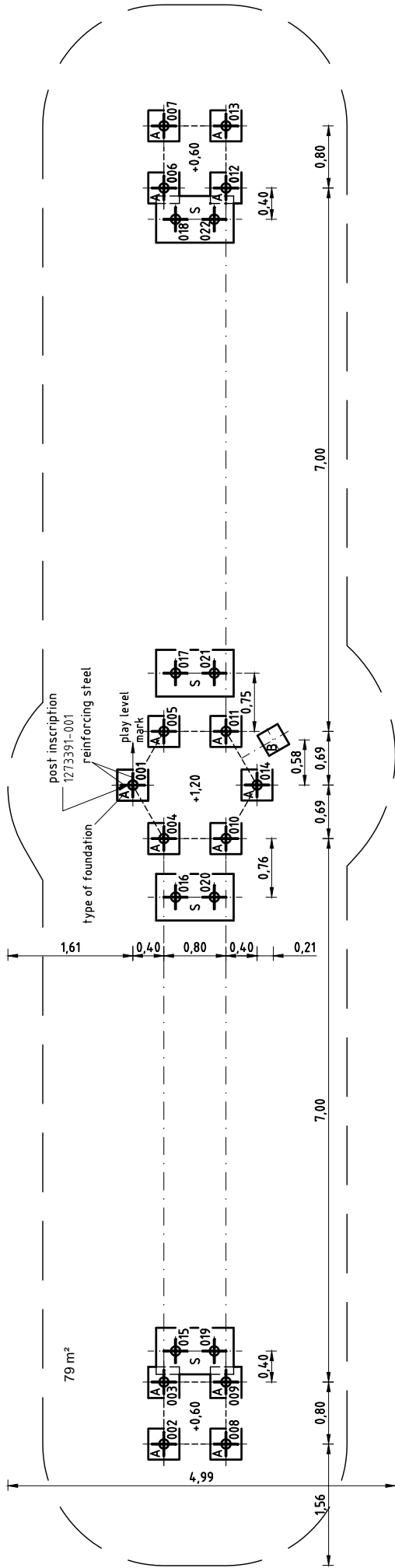
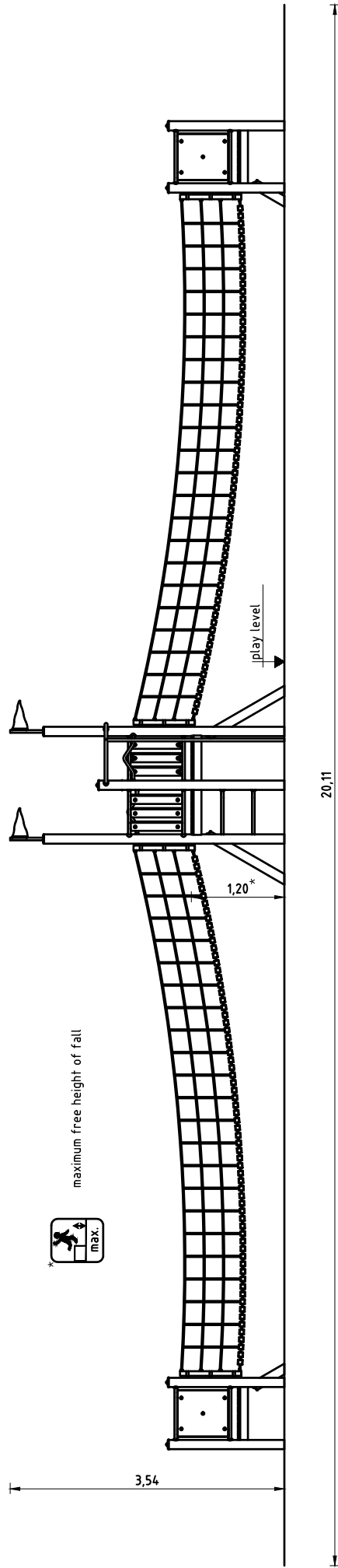
- Screw together the eyebolts M12 at the rope ends of the wooden treads (two pieces on each side) and the bridge frame.

Caution: Do not clamp bolted connections, the eyebolts must remain flexible in the fixing links!

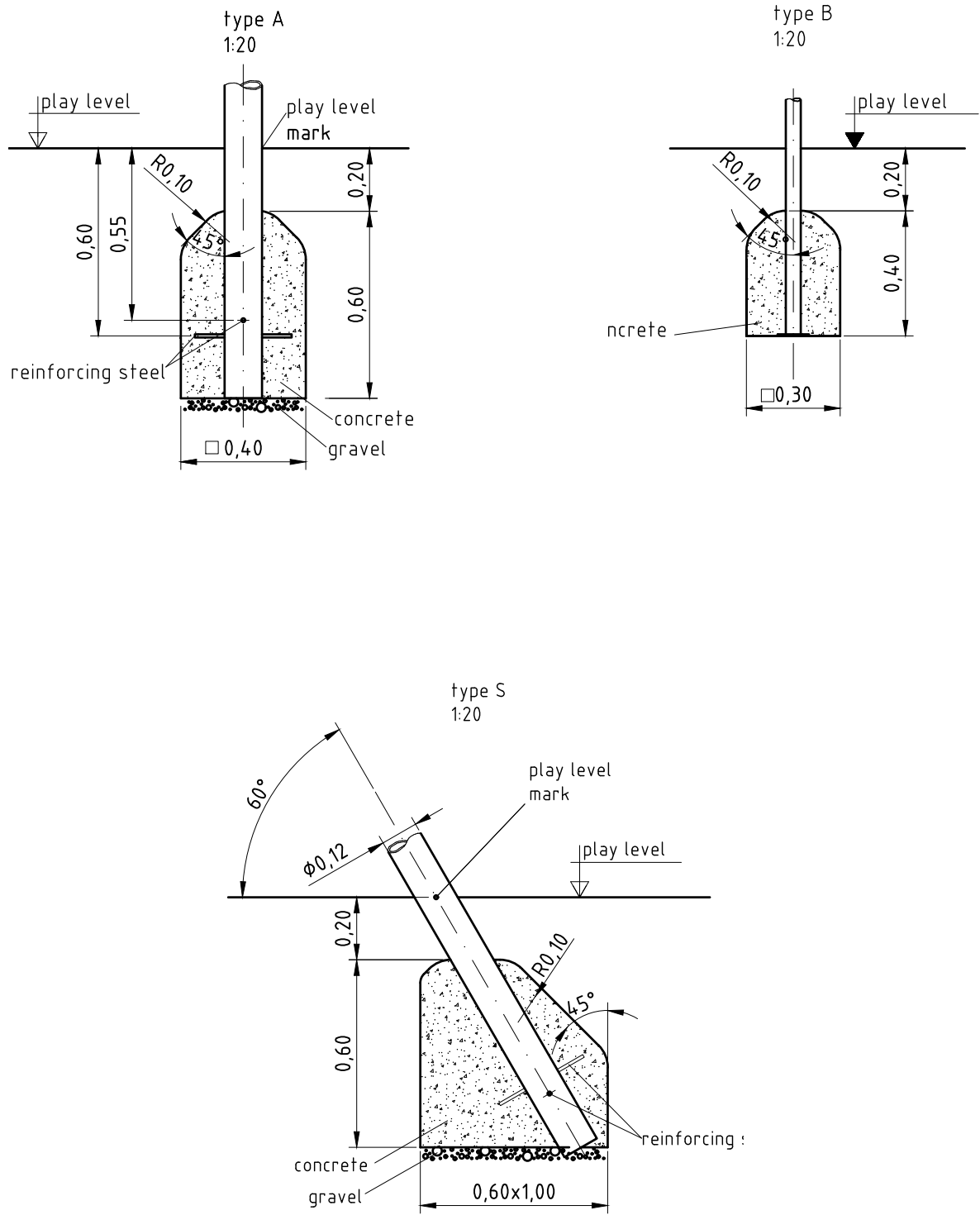
- Insert rope ends into connecting piece (socket) of bridge frame until the inner width between bridge frame vertical rope is at least 230 mm and the probe D (ø 230 mm), specified in the standard for playground equipment surfacing EN 1176-1, passes through the meshes of the lateral rail ropes. Perform test in the most onerous inserted into the socket, the aluminium sleeve pressed-on the rope end must be located behind the hole for countersunk screw. Do not screw through the metal ring, this will destroy the rope end. Fix rope ends.
- The difference in height between the two terminal points must not exceed 0, 0m. With an inclined installation meshes of the side rail ropes have to be checked for any possible head entrapment point, as specified in the for playground equipment and surfacing EN 1176-1. With the design of the lateral rail ropes given, each ring to be big enough to facilitate that probe D (ø 230 mm) passes through. Also perform this test in the most c



First mount infill panels and bowed guardrails to posts 003 to 006 and 009 to 012, afterwards mount plank bridge frames.



Please note:
 Due to the format size, this installation is not to scale (apart from single details).
 Please refer to the dimensions indicated.
 An installation documentation scale 1:50 can be submitted on request.



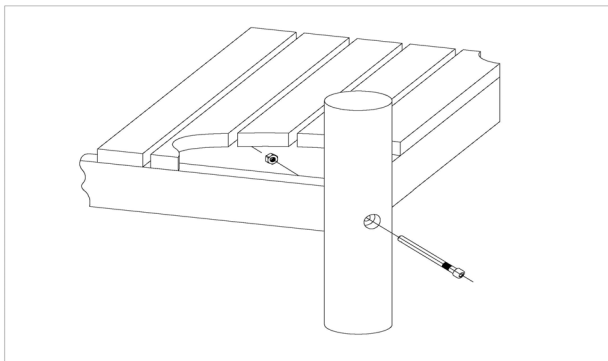
Item: **028200502**
 Bridge combination
 Location:

Order:

1295213

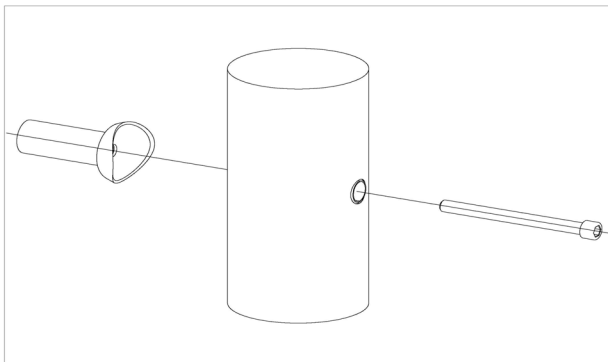
Building Project:

14 x SFES1200001 Platform fastening to stainless steel post, nut on the side of the platform



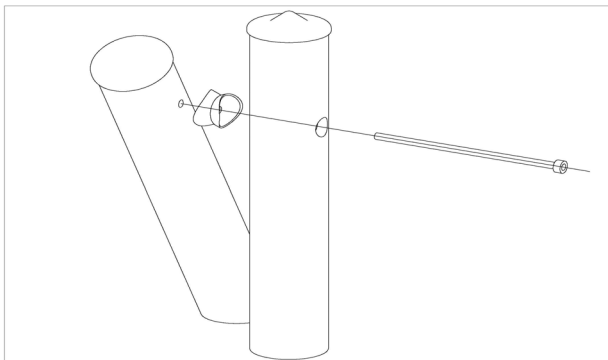
per SC	Total	K&K-Item	Marking
1 x	14 x	3430021	Lock nut M12 DIN985 A2
1 x	14 x	2030651	Cheese head screw with pin M12 x 125

40 x SFES1210001 Standard bolting of attachment parts (except platforms) to stainless steel posts



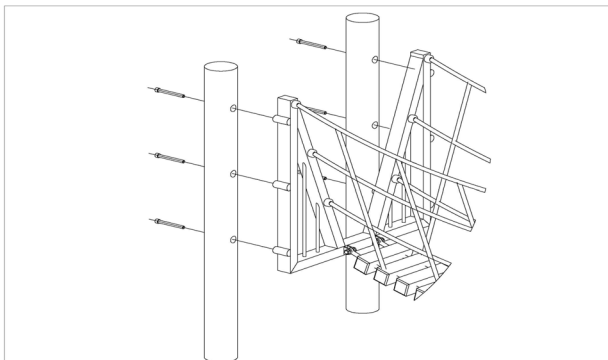
per SC	Total	K&K-Item	Marking
1 x	40 x	2030168	Cheese head screw with pin M12x140

8 x SFES1200011 Stainless steel support post with screw thread



per SC	Total	K&K-Item	Marking
1 x	8 x	2030247	Cheese head screw with pin M12 x 255

24 x SFES1200006 Plank bridge frame at stainless steel post



per SC	Total	K&K-Item	Marking
1 x	24 x	2030246	Cheese head screw M12 x 110 with pin

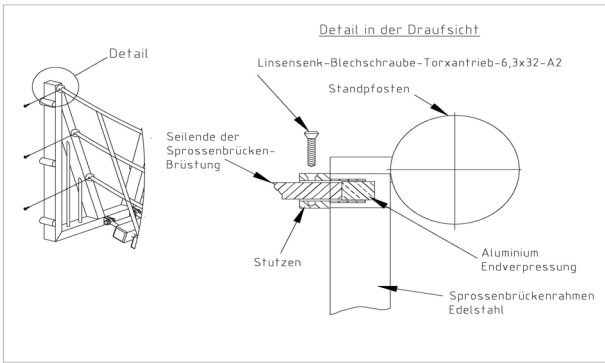
Item: **028200502**
 Bridge combination
 Location:

Order:

1295213

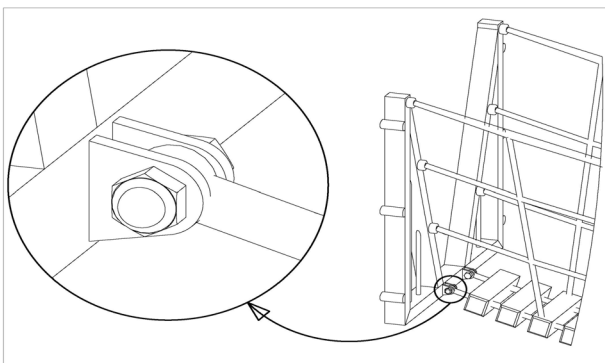
Building Project:

24 x SFAS1200001 Plank bridge railing ropes in plank bridge frame



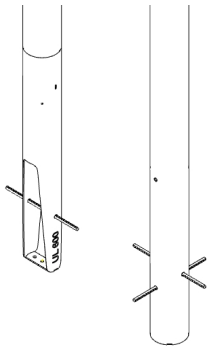
per SC	Total	K&K-Item	Marking
1 x	24 x	3400515	Oval head countersunk screw Torx Ø 6,3 x 32 galv.

4 x SFAS1200017 Supporting cables of plank bridge at plank bridge frame (>6.00 m span width)



per SC	Total	K&K-Item	Marking
2 x	8 x	3430041	Hexagon cap nut M16 DIN986 A2
2 x	8 x	3430060	Washer Ø 17 DIN125 A2
2 x	8 x	3400526	Hexagon head screw M16 x 50 DIN 933 A2

44 x SFAS1270001 Reinforcing steel bar for posts



per SC	Total	K&K-Item	Marking
1 x	44 x	2130000	Reinforcing steel Ø 10 x 310 DIN 488

1 x SFWZ0000009 Hexagon insert socket driver 10mm 1/2" with borehole for Pin



per SC	Total	K&K-Item	Marking
1 x	1 x	2030170	Hexagon insert socket driver 10 mm 1/2" with drill hole for Pin

Item: **028200502**
 Bridge combination
 Location:

Order:

1295213

Building Project:

1 x SFWZ0000010 Security bit TORX PLUS IPR 30 x 25

per SC	Total	K&K-Item	Marking
1 x	1 x	3490038	Security bit TORX PLUS IPR 30 x 25



2 x SFWZ0000012 Lubricating metal (30 g box) incl. brush

per SC	Total	K&K-Item	Marking
1 x	2 x	5300039	Lubricating metal box 30g
1 x	2 x	5200026	Brush for lubricating metal

