

platform orientation/numbers  
1:100

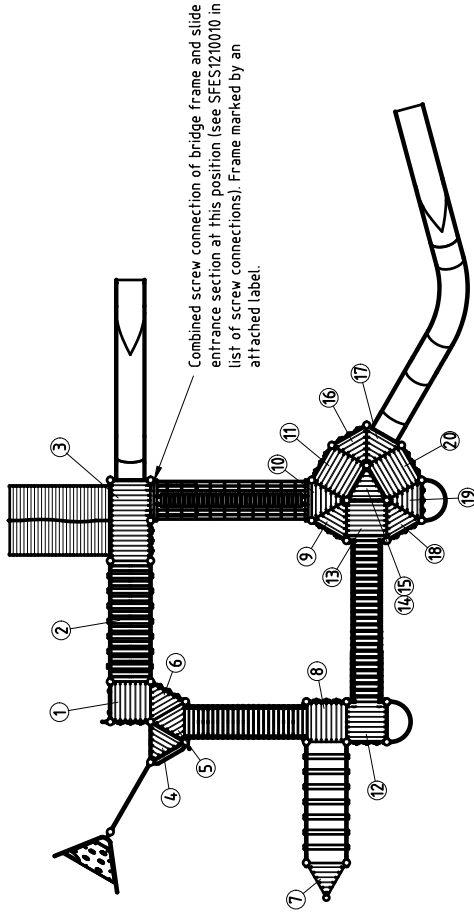
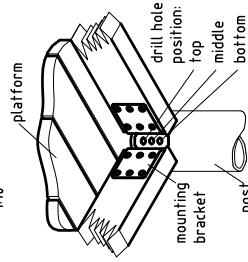


chart for platform fastenings

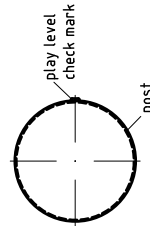
No.	height	drill hole position		
		top	middle	bottom
1	2,00	x		
2	1,60		x	
3	2,00			x
4	1,20		x	
5	1,60	x		
6	1,80		x	
7	0,20			x
8	1,60		x	
9	2,20			x
10	2,40			x
11	2,60			
12	1,80	x		
13	2,00		x	
14	1,20			x
15	3,00			x
16	2,80			x
17	2,80		x	
18	2,20			x
19	2,40			x
20	2,60			x

in addition to the above-mentioned details, there is a twofold screw connection (use both top and bottom hole):

platform No. 3 at post 010



detail of check mark  
1:5



EN 1176

- Assign a device location considering the space requirement (impact area). Due to a possible sliding surface heating, please see to a north-east orientation (northern hemisphere) of the slides or provide half-shade of trees.  
For countries in the southern hemisphere, see to a south-east orientation.
- Excavate soil for foundations, according to drawing.  
Please note: To achieve maximum stability and a safe installation, a moderate level of soil solubility is required.
- Pour in a drain layer of gravel of approx. 10 cm thickness between the bottom of the posts and plain base of foundation.
- Insert reinforcing steel into the corresponding holes of the posts.
- Place posts type A according to the corresponding number (see foundation layout) into the respective foundation hole. Play level mark (=aluminum blind rivet) complies with the installation depth. Align every post by means of the play level mark facing into the same direction (see detail or foundation layout).
- For installation of the pre-assembled components and/or single parts, the screws slightly have to be lubricated with installation paste!**  
Screw together platforms and posts by using the respective hole in the mounting brackets (according to "chart for platform fastening").  
**Tighten all screws after having aligned all components.**  
Install the slide exit with the given inclination in sliding direction so that rain water can drain off (see foundation detail).  
Screw connections see details in attached list.
- Grout foundations with compressed concrete C20/25, chamfer and round off the edges, cover the foundations with a surface which meets the requirement for impact attenuation so that the critical fall height of the surfacing is equal to, or greater than, the free height of fall of the equipment (acc. to EN 1176-1). The run-out section fall zone must have surfacing with a critical fall height of at least 1000mm (acc. to EN 1176-3).
- Release for play after concrete foundations have set.
- According to maintenance instructions, check all screw connections after 4-5 weeks and retighten, if necessary.

Please ensure that all special tools supplied (e.g. Allen key for secured Allen screws etc.) and all specific documents which are or may be useful for safety management acc. to EN 1176-7 (e.g. invoice, delivery note, order acknowledgement, installation instructions, maintenance instructions) are forwarded to the persons responsible.

**Necessarily insert all attachment parts before tightening the screws. It is NOT possible to insert them afterwards.**

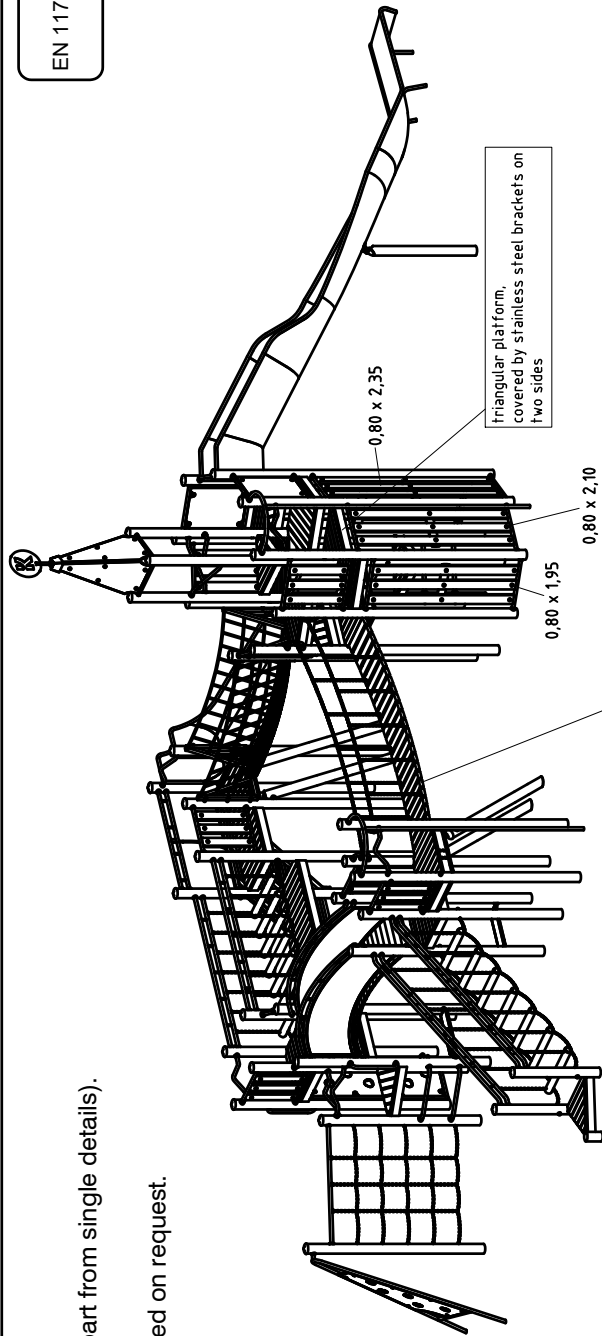
EN 1176

**Please note:**

Due to the format size, this installation is not to scale (apart from single details).

Please refer to the dimensions indicated.

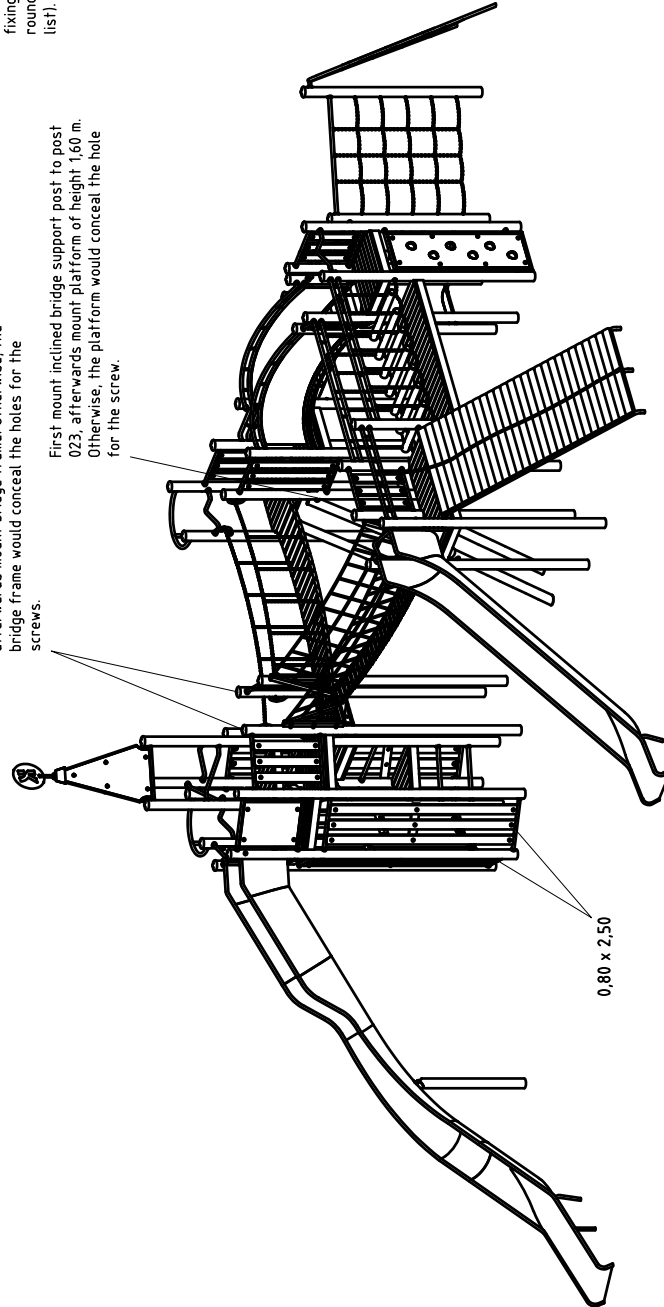
An installation documentation scale 1:50 can be submitted on request.



The grooved slats laid onto two suspension cables must be secured against movement by fixing the small metal plates provided with round-head wood screws (see detail on attached list).

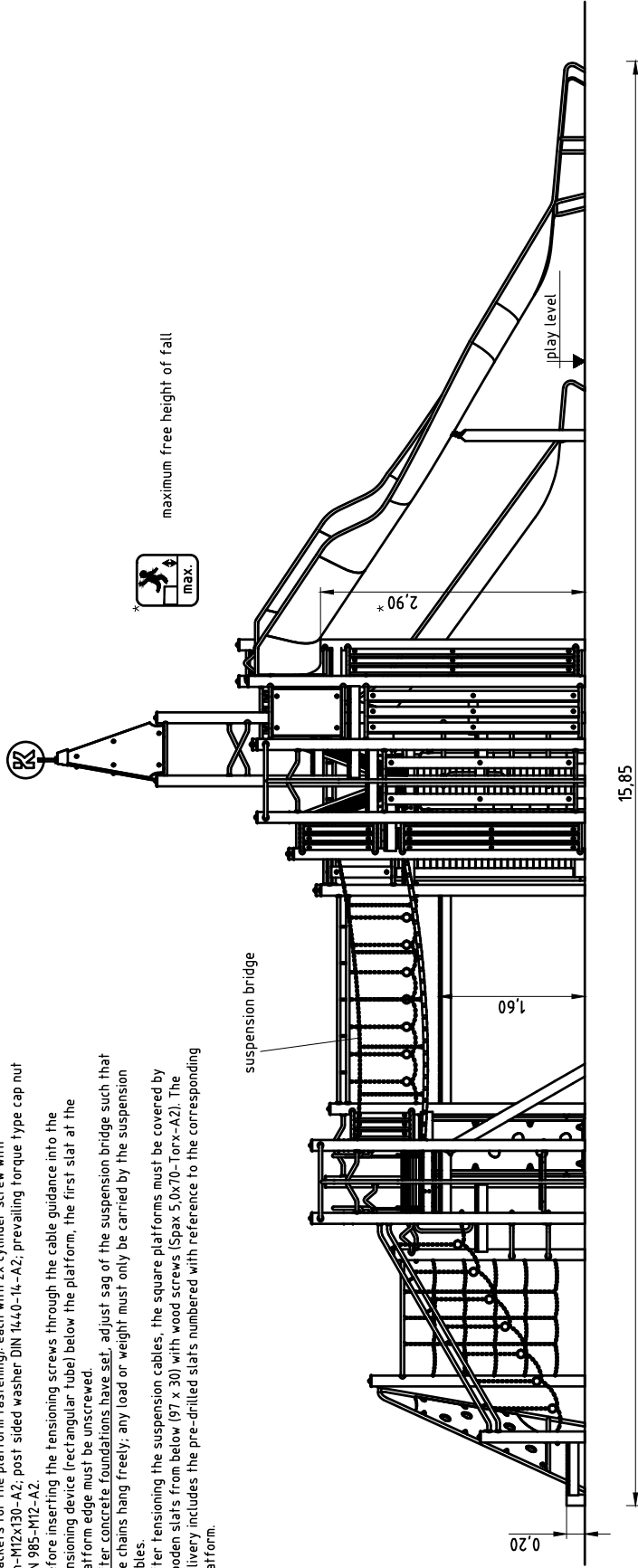
First mount barriers to posts 017 and 018 afterwards mount bridge frame. Otherwise, the bridge frame would conceal the holes for the screws.

First mount inclined bridge support post to post 023, afterwards mount platform of height 1,60 m. Otherwise, the platform would conceal the hole for the screw.

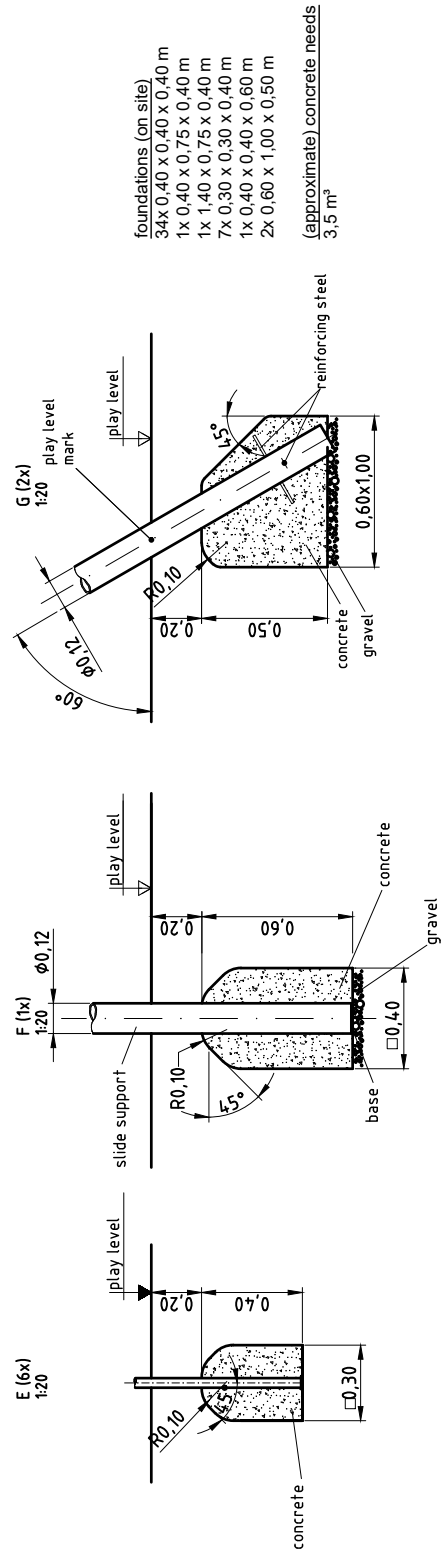
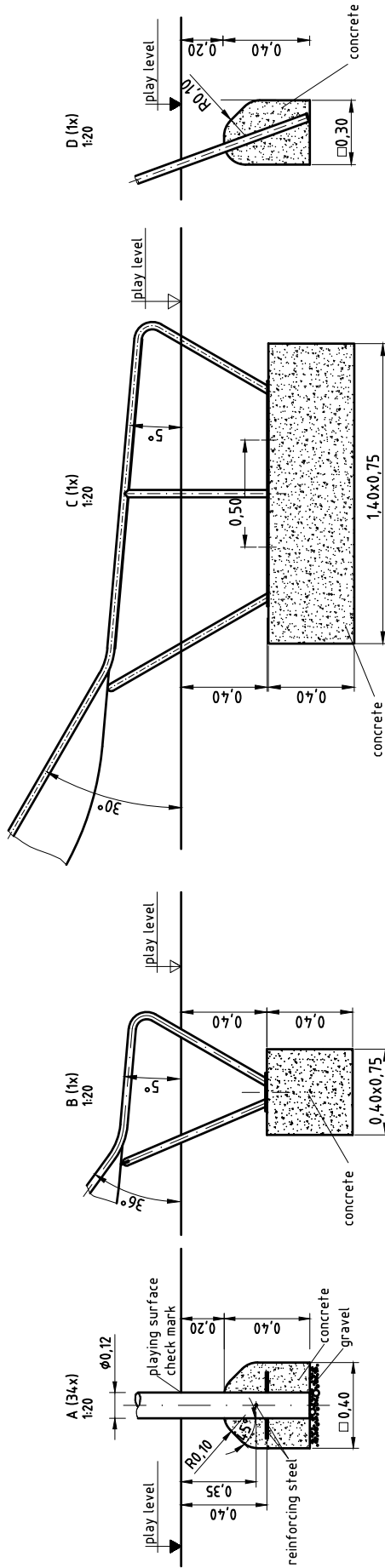


[For further details see attached list]:

1. Fasten platforms to the posts by using the upper hole in the mounting brackets (each with 4x cylinder screw with pin-M12 x 125-A2; 4x prevailing torque type nut DIN 985-M12-A2, platform side).
2. Keep in mind that for the posts, the drilled hole in the flat bar (bearer cable support) is positioned 20 mm lower (level with the middle hole in the mounting brackets for the platform fastening); each with 2x cylinder screw with pin-M12x130-A2; post sided washer DIN 1440-14-A2; prevailing torque type cap nut DIN 985-M12-A2.
3. Before inserting the tensioning screws through the cable guidance into the tensioning device (rectangular tube) below the platform, the first slat at the platform edge must be unscrewed.  
After concrete foundations have set, adjust sag of the suspension bridge such that the chains hang freely; any load or weight must only be carried by the suspension cables.
4. After tensioning the suspension cables, the square platforms must be covered by wooden slats from below (97 x 30) with wood screws (Spax 5,0x70-Torx-A2). The delivery includes the pre-drilled slats numbered with reference to the corresponding platform.

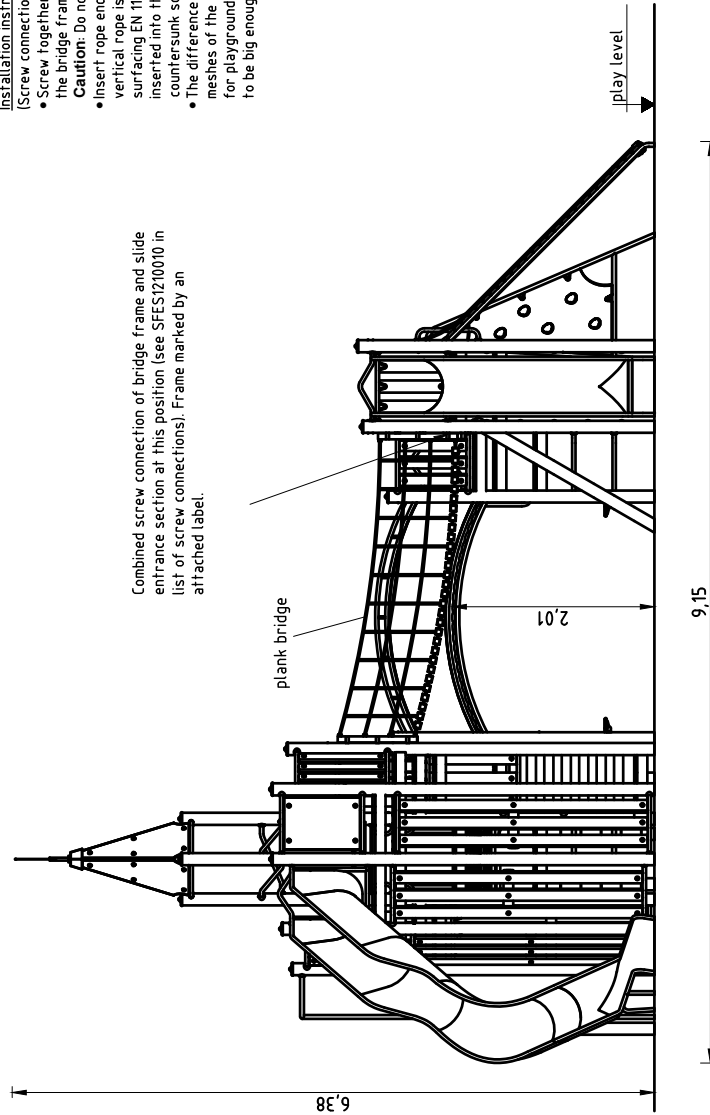








total height of the equipment



**Installation instructions for plank bridge**

(Screw connections of lateral rail ropes/net barrier to bridge frame see details in attached list)  
 • Screw together the eyebolts M12 at the rope ends of the wooden treads (two pieces on each side) and the fixing links of the bridge frame.

**Caution:** Do not clamp bolted connections, the eyebolts must remain flexible in the fixing links!

- Insert rope ends into connecting piece (socket) of bridge frame until the inner width between bridge frame and first vertical rope is at least 230 mm and the probe D (ø 230 mm), specified in the standard for playground equipment and surfacing EN 1176-1, passes through the meshes of the lateral rail ropes. Perform test in the most onerous way. Once inserted into the socket, the aluminium sleeve pressed on the rope end must be located behind the hole for oval head countersunk screw. Do not screw through the metal ring, this will destroy the rope end. Fix rope ends.
- The difference in height between the two terminal points must not exceed 0, 0m. With an inclined installation, the meshes of the side rail ropes have to be checked for any possible head entrapment point, as specified in the standard for playground equipment and surfacing EN 1176-1. With the design of the lateral rail ropes given, each single mesh has to be big enough to facilitate that probe D (ø 230 mm) passes through. Also perform this test in the most onerous way.

Combined screw connection of bridge frame and slide entrance section at this position (see SFES1210010 in list of screw connections). Frame marked by an attached label.

plank bridge

2,01

9,15

play level

6,38

Item: **023835501**

Order:

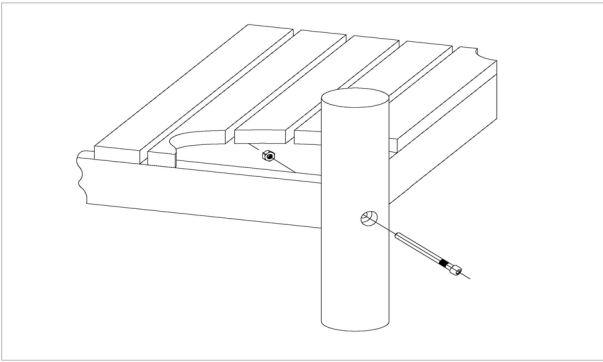
1295202

Play structure

Location:

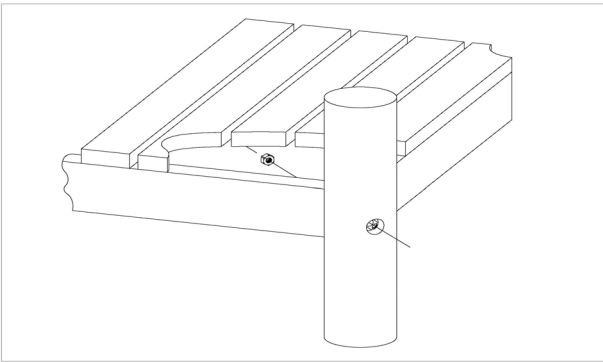
Building Project:

**71 x SFES1200001 Platform fastening to stainless steel post, nut on the side of the platform**



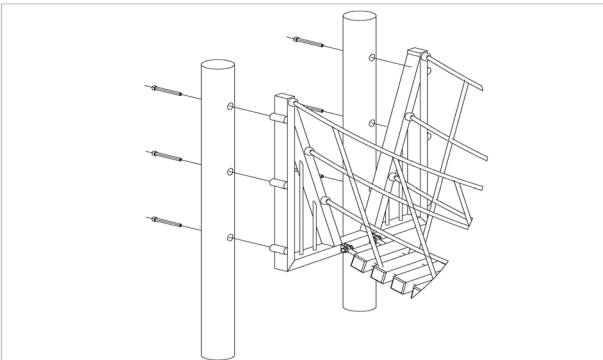
per SC	Total	K&K-Item	Marking
1 x	71 x	3430021	Lock nut M12 DIN985 A2
1 x	71 x	2030651	Cheese head screw with pin M12 x 125

**3 x SFES1200004 Platform at stainless steel posts screw fixed by manufacturer**



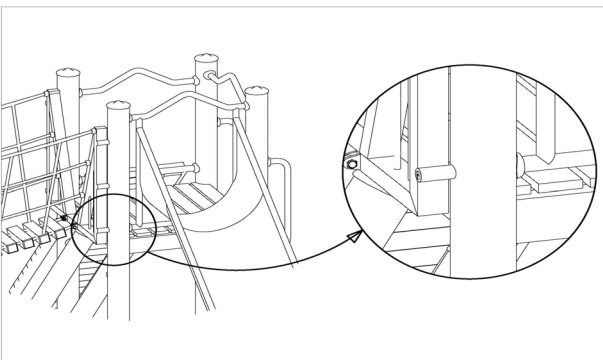
per SC	Total	K&K-Item	Marking
1 x	3 x	3430021	Lock nut M12 DIN985 A2

**11 x SFES1200006 Plank bridge frame at stainless steel post**



per SC	Total	K&K-Item	Marking
1 x	11 x	2030246	Cheese head screw M12 x 110 with pin

**1 x SFES1210010 common bolting of plank bridge frame through post at attached part**



per SC	Total	K&K-Item	Marking
1 x	1 x	2030551	Cheese head screw M12 x 210 with pin

Item: **023835501**

Order:

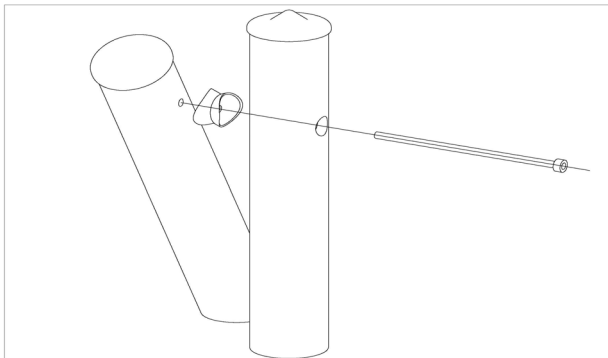
1295202

Play structure

Location:

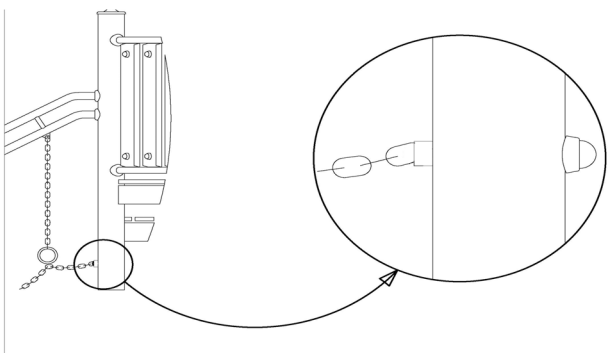
Building Project:

**4 x SFES1200011 Stainless steel support post with screw thread**



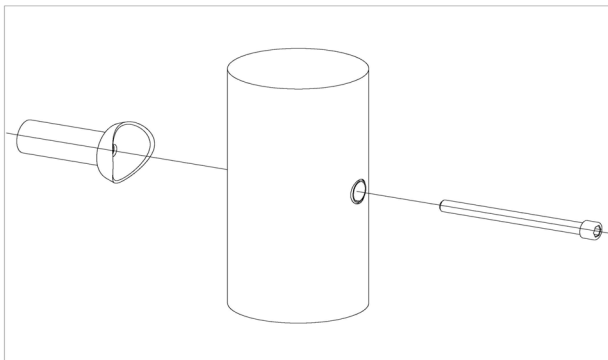
per SC	Total	K&K-Item	Marking
1 x	4 x	2030247	Cheese head screw with pin M12 x 255

**8 x SFES1200018 Timber-course connecting chain for tottery bridge/ for tottery stairs**



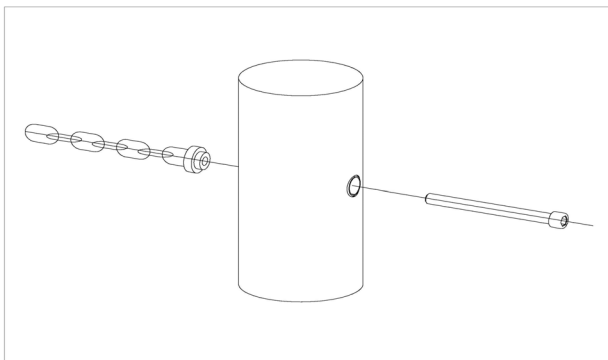
per SC	Total	K&K-Item	Marking
1 x	8 x	3300055	Red protective screw cap - upper part, domed M12
1 x	8 x	3300054	Red protective screw cap - lower part, domed M12
1 x	8 x	3430021	Lock nut M12 DIN985 A2
1 x	8 x	3430025	Washer Ø 13 DIN125 A2

**164 x SFES1210001 Standard bolting of attachment parts (except platforms) to stainless steel posts**



per SC	Total	K&K-Item	Marking
1 x	164 x	2030168	Cheese head screw with pin M12x140

**12 x SFES1230001 End link of a chain at a stainless steel post (with internal thread)**



per SC	Total	K&K-Item	Marking
1 x	12 x	2030246	Cheese head screw M12 x 110 with pin



Item: **02383501**

Order:

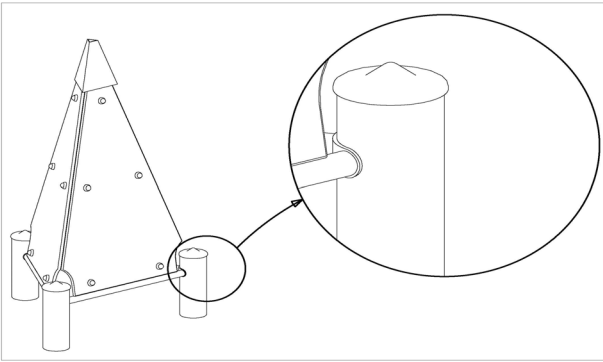
1295202

Play structure

Location:

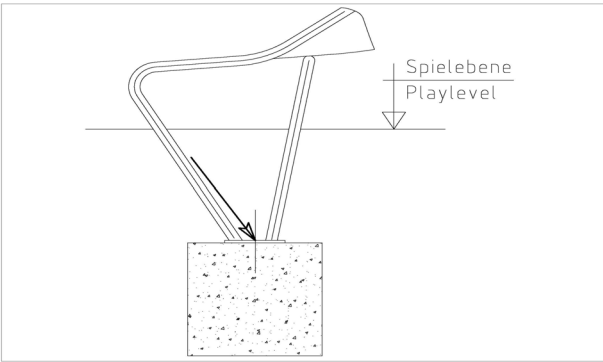
Building Project:

**3 x SFES1240001 Roof frame of spire roof 80° at stainless steel posts**



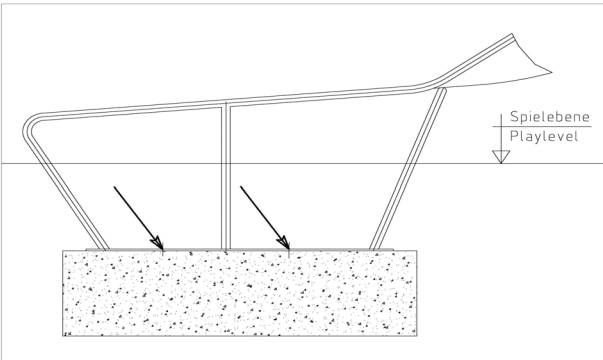
per SC	Total	K&K-Item	Marking
1 x	3 x	3430051	Hexagon cap nut M12 DIN 986 A2
1 x	3 x	3430025	Washer Ø 13 DIN125 A2
1 x	3 x	2030169	Cheese head screw with pin M12 x 130

**2 x SFXS1070006 Slide run-out section (up to 2,00 m) on foundation stone bolt assembly**



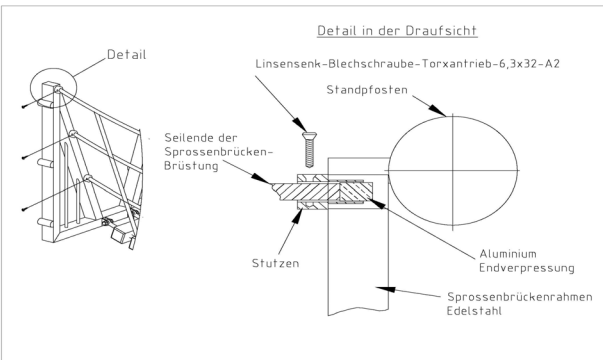
per SC	Total	K&K-Item	Marking
1 x	2 x	1070365	Set of stone bolts for slide run-out section M12x160

**4 x SFXS1070008 Slide run-out section (midi) stone bolt assembly**



per SC	Total	K&K-Item	Marking
1 x	4 x	1070365	Set of stone bolts for slide run-out section M12x160

**12 x SFAS1200001 Plank bridge railing ropes in plank bridge frame**



per SC	Total	K&K-Item	Marking
1 x	12 x	3400515	Oval head countersunk screw Torx Ø 6,3 x 32 galv.

Item: **023835501**

Order:

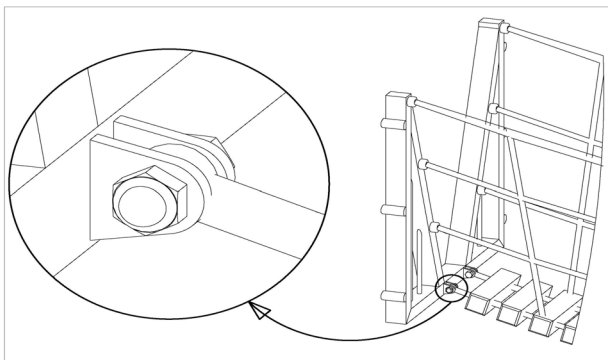
1295202

Play structure

Location:

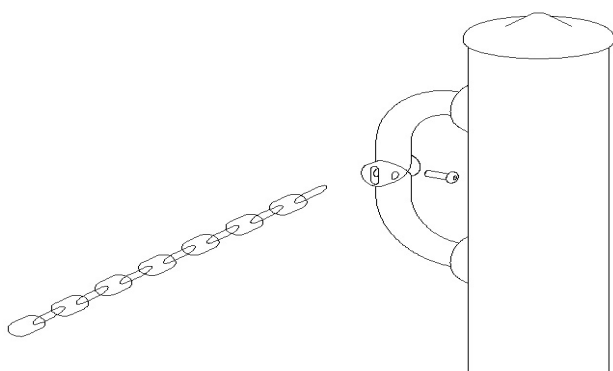
Building Project:

**4 x SFAS120004 Supporting cable for plank bridge at frame**



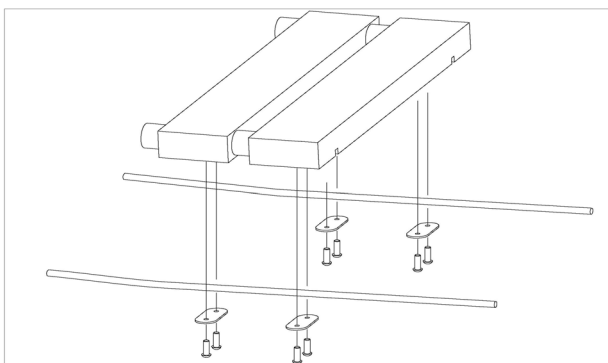
per SC	Total	K&K-Item	Marking
1 x	4 x	3430051	Hexagon cap nut M12 DIN 986 A2
1 x	4 x	3430025	Washer Ø 13 DIN125 A2
1 x	4 x	2030519	Fixing srew M12x45 for plank bridges

**4 x SFAS120006 Handrail chain for suspension bridge at chain adapter**



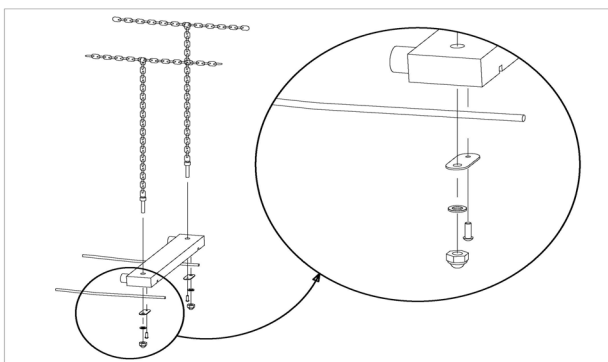
per SC	Total	K&K-Item	Marking
1 x	4 x	3400676	Dome head screw M8x25 Security Torx TR40 A2

**40 x SFAS120007 Course timbers for suspended bridge (2,40 m) on bridge support rope**



per SC	Total	K&K-Item	Marking
32 x	1280 x	3410056	Round head wood screw 6 x 30 DIN40096 A2 T25
1 x	40 x	2000931	sheet metal closing strap for slats

**10 x SFAS120010 Course timbers/handrail chain for suspended bridge (2,40 m) on bridge support rope**



per SC	Total	K&K-Item	Marking
1 x	10 x	3430025	Washer Ø 13 DIN125 A2
1 x	10 x	3430051	Hexagon cap nut M12 DIN 986 A2
1 x	10 x	3410056	Round head wood screw 6 x 30 DIN40096 A2 T25
1 x	10 x	2000930	sheet metal strap for suspension chains and slats

Item: **023835501**

Order:

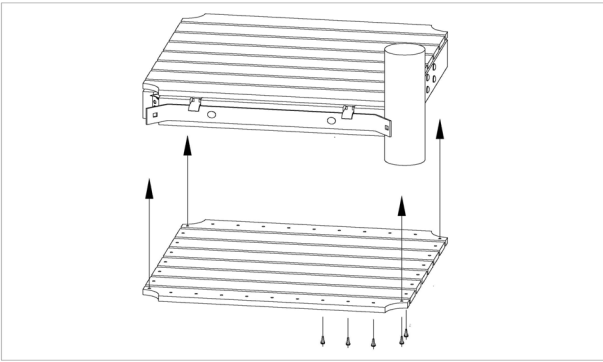
1295202

Play structure

Location:

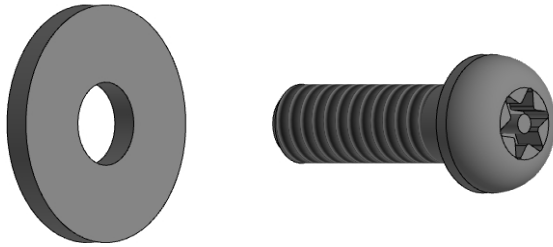
Building Project:

**2 x SFAS1200015 Bottom cladding of square platforms 0,80 x 0,80 m with tensioning device for a suspension bridge**



per SC	Total	K&K-Item	Marking
38 x	76 x	3410055	SPAX screw Ø 5,0 x 70 Torx A2 with partial thread

**3 x SFAS1240032 Roof hood fastening on HPL panels**



per SC	Total	K&K-Item	Marking
1 x	3 x	3430102	Washer Ø 8.4 DIN9021 A2
1 x	3 x	3400673	Dome head screw M8x20 A2 Security Torx TR40

**37 x SFES1270001 Reinforcing steel for stainless steel posts**



per SC	Total	K&K-Item	Marking
2 x	74 x	2130000	Reinforcing steel Ø 10 x 310 DIN 488

**1 x SFWZ0000001 Security TORX wrench TR40**



per SC	Total	K&K-Item	Marking
1 x	1 x	3490081	Security TORX wrench TR40

Item: **023835501**

Order:

1295202

Play structure

Location:

Building Project:

**1 x SFWZ000009 Hexagon insert socket driver 10mm 1/2" with borehole for Pin**



per SC	Total	K&K-Item	Marking
1 x	1 x	2030170	Hexagon insert socket driver 10 mm 1/2" with drill hole for Pin

**1 x SFWZ000010 Security bit TORX PLUS IPR 30 x 25**



per SC	Total	K&K-Item	Marking
1 x	1 x	3490038	Security bit TORX PLUS IPR 30 x 25

**3 x SFWZ000012 Lubricating metal (30 g box) incl. brush**



per SC	Total	K&K-Item	Marking
1 x	3 x	5300039	Lubricating metal box 30g
1 x	3 x	5200026	Brush for lubricating metal