



Product Service

CERTIFICATE

No. Z1A 16 06 21833 729

Holder of Certificate: **Kaiser & Kühne
Freizeitgeräte GmbH**

Im Suedloh 5
27324 Eystруп
GERMANY



Certification Mark:



Product: **Fitness Equipment
Free accessible**

Tested according to: DIN EN 16630:2015
EN 16630:2015
AfPS GS 2014:01 PAK 3.1

The product meets the safety and health requirements of the German Product Safety Act section 20 to 22 ProdSG. The certification marks shown above can be affixed on the product. It is not permitted to alter the certification marks in any way. In addition the certificate holder must not transfer the certificate to third parties. This certificate is valid until the listed date, unless it is cancelled earlier. See also notes overleaf.

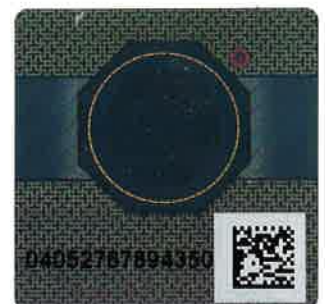
Test report no.: 713075926-03

Valid until: 2021-06-27

Date, 2016-07-05

(Jens Biesenack)

Page 1 of 2





CERTIFICATE

No. Z1A 16 06 21833 729

Model(s):

- 0-57600-xxx Calisthenics-Station Freestylebars Basic**
- 0-57602-xxx Calisthenics-Station Flyerbars**
- 0-57604-xxx Calisthenics-Station Flyerbars Wings**
- 0-57606-xxx Calisthenics-Station Pittbars**
- 0-57608-xxx Calisthenics-Station Jordansbars**
- 0-57610-xxx Calisthenics-Station Jordansbars Pro**
- 0-57612-xxx Calisthenics-Station United Bars**

Parameters:

Produkt: Fitness Equipment

Type:

- 0-57600-xxx Calisthenics-Station Freestylebars Basic
- 0-57602-xxx Calisthenics-Station Flyerbars Part 1 + 2
- 0-57604-xxx Calisthenics-Station Flyerbars Wings
- 0-57606-xxx Calisthenics-Station Pittbars
- 0-57608-xxx Calisthenics-Station Jordansbars
- 0-57610-xxx Calisthenics-Station Jordansbars Pro
- 0-57612-xxx Calisthenics-Station United Bars

Explanation –xxx

- 500 Base Stainless steel pipe Ø 120 mm.
- 700 Base glued-laminated timber KAROLAM® with tube pedestal Ø 120 mm.
- 900 Stainless steel pipe Ø 114 mm.
- 000 Stainless steel pipe Ø 42,4 mm.

Measurements:

Deviation by post variations possibly

Item No.:	Length/Width appr.	Height/free height of fall acc.to DIN EN 16630:2015
0-57600-900	1914/1914 mm	2610 / 1600 mm
0-57602-900	3714/114 mm	2610 / 1600 mm
Part 1		
0-57602-000	2192/642 mm	1400 / 1400 mm
Part 2		
0-57604-900	1914/1914 mm	1460 / 1400 mm
0-57606-900	5514/1914 mm	2480 / 1420 und 1670 mm
0-57608-900	3474/1914 mm	2650 / 1550 mm
0-57610-900	5274/1914 mm	2610 / 1638 mm
0-57612-900	5514/114 mm	2410 / 1338 mm

Factory(ies):

21833