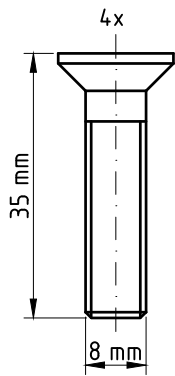


1. Assign a device location considering the space requirements (impact area).
2. Excavate soil for foundations, according to drawing.
Please note: To achieve maximum stability and a safe installation, a moderate level of soil solubility is required.
3. Place posts into the respective foundation hole. Play level mark (=pin) complies with the installation depth.
4. **For installation of the pre-assembled components and/or single parts, the screws slightly have to be lubricated with installation paste!**
Tighten all screws after having aligned all components.
5. Grout foundations with compressed concrete C20/25, chamfer and round off the edges, cover the foundations with a surface which meets the requirements for impact attenuation so that the critical fall height of the surfacing is equal to, or greater than, the free height of fall of the equipment (acc. to EN 1176-1).
6. Release for play after concrete foundations have set.
7. According to maintenance instructions, check all screw connections after 4-5 weeks and retighten, if necessary.

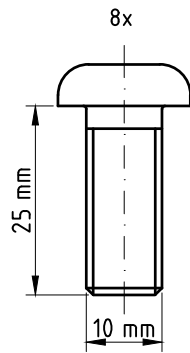
Please ensure that all special tools supplied (e.g. Allen key for secured Allen screws etc.) and all specific documents which are or may be useful for safety management acc. to EN 1176-7 (e.g. invoice, delivery note, order acknowledgement, installation instructions, maintenance instructions) are forwarded to the persons responsible.

Necessarily insert all attachment parts before tightening the screws.

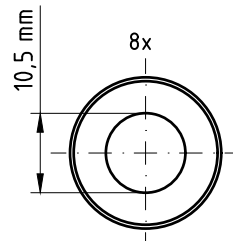
It is NOT possible to insert them afterwards.



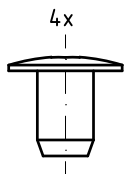
countersunk security screw - M8x35 - A2



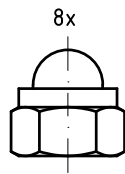
oval-head security screw ISO 7380 - M10x25 - A2



washer DIN 125 - Ø10,5 - A2



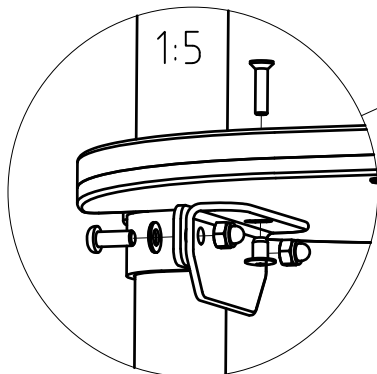
RAMPA round nut type RF - M8



locking cap nut DIN 986 - M10 - A2

4 x screw connection

consisting of:
countersunk security screw - M8x35 - A2;
RAMPA round nut type RF - M8



8 x screw connection

consisting of:
oval-head security screw ISO 7380 - M10x25 - A2;
washer DIN 125 - Ø10,5 - A2;
locking cap nut DIN 986 - M10 - A2

