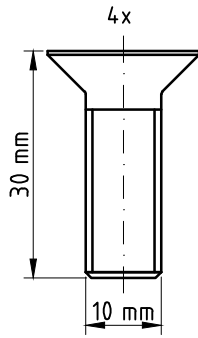


1. Assign a device location considering the space requirements (impact area).
2. Excavate soil for foundations, according to drawing.
Please note: To achieve maximum stability and a safe installation, a moderate level of soil solubility is required.
3. Place base frame into the foundation holes.
4. **For installation of the pre-assembled components and/or single parts, the screws slightly have to be lubricated with installation paste! Tighten all screws after having aligned all components.**
5. Grout foundations with compressed concrete C20/25, chamfer and round off the edges, cover the foundations with a surface which meets the requirements for impact attenuation so that the critical fall height of the surfacing is equal to, or greater than, the free height of fall of the equipment (acc. to EN 1176-1).
6. Release for play after concrete foundations have set.
7. According to maintenance instructions, check all screw connections after 4-5 weeks and retighten, if necessary.

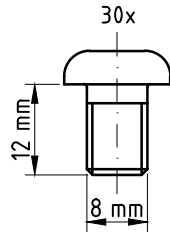
Please ensure that all special tools supplied (e.g. Allen key for secured Allen screws etc.) and all specific documents which are or may be useful for safety management acc. to EN 1176-7 (e.g. invoice, delivery note, order acknowledgement, installation instructions, maintenance instructions) are forwarded to the persons responsible.

Necessarily insert all attachment parts before tightening the screws.

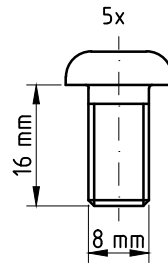
It is NOT possible to insert them afterwards.



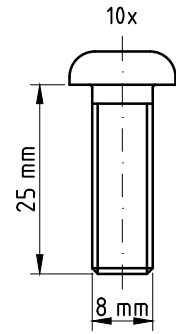
countersunk screw DIN 7991 -
M10x30 - A2



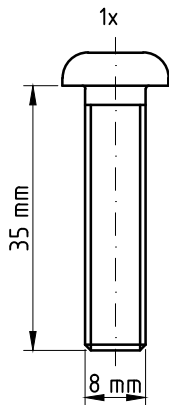
oval-head security screw -
M8x12 - A2



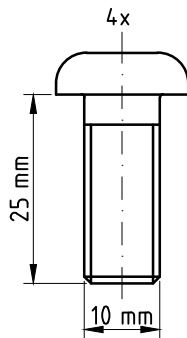
oval-head security screw -
M8x16 - A2



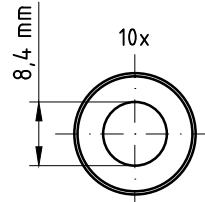
oval-head security screw -
M8x25 - A2



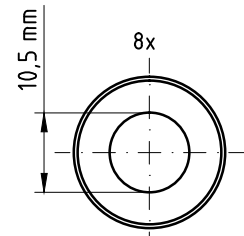
oval-head security screw -
M8x35 - A2



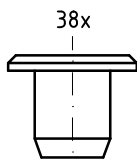
oval-head security screw -
M10x25 - A2



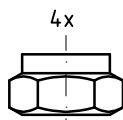
washer DIN 125 -
ø8,4 - A2



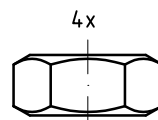
washer DIN 125 -
ø10,5 - A2



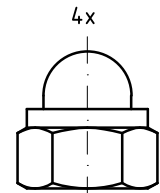
RAMPA round
nut type RF - M8



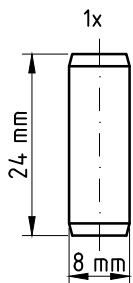
lock nut DIN 985 -
M8 - A2



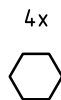
hexagon nut DIN 934 -
M10 - A2



locking cap nut
DIN 986 - M10 - A2

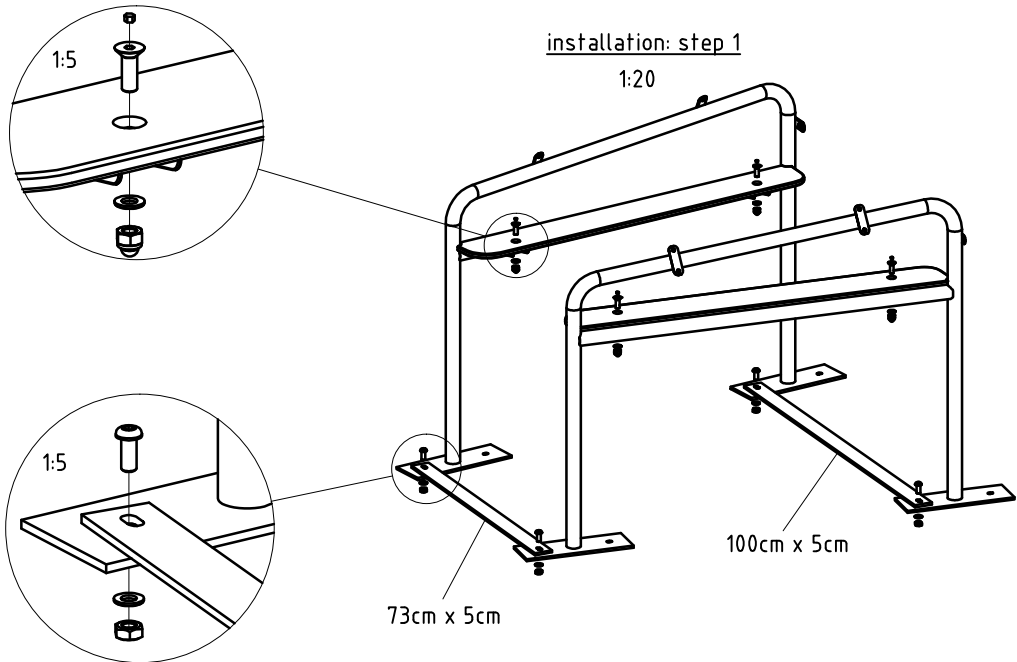


cylinder pin ISO 2338 -
ø8x24 - A2



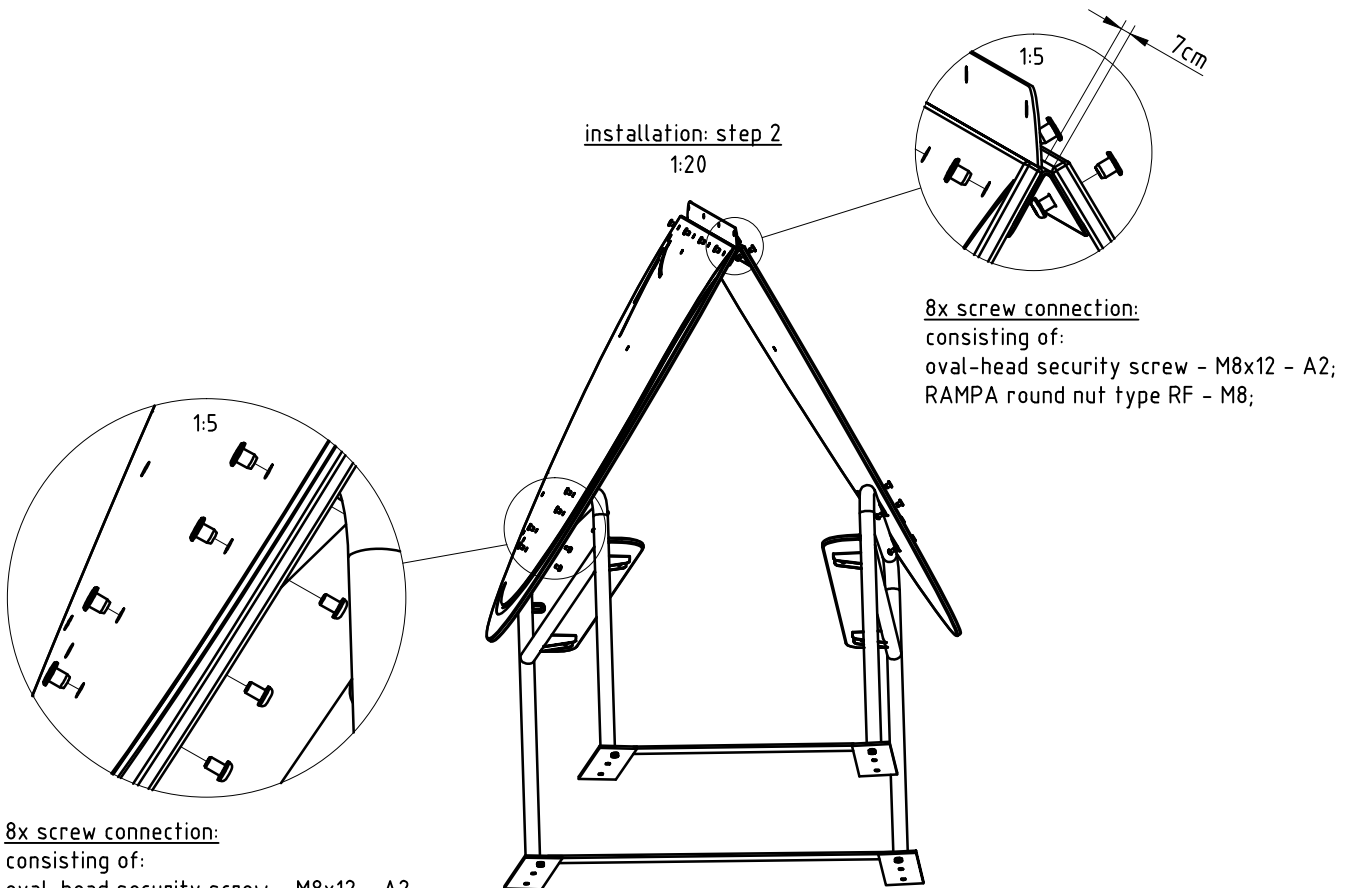
aluminium stopper 6mm

4x screw connection:
 consisting of:
 countersunk screw DIN 7991 - M10x30 - A2;
 aluminium stopper 6mm;
 washer DIN 125 - ϕ 10,5 - A2;
 locking cap nut DIN 986 - M10 - A2;



4x screw connection:
 consisting of:
 oval-head security screw - M10x25 - A2;
 washer DIN 125 - ϕ 10,5 - A2;
 hexagon nut DIN 934 - M10 - A2.

installation: step 2
 1:20



8x screw connection:
 consisting of:
 oval-head security screw - M8x12 - A2;
 RAMPA round nut type RF - M8;

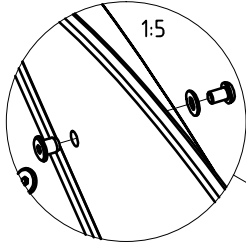
4x screw connection:

consisting of:

oval-head security screw - M8x12 - A2;

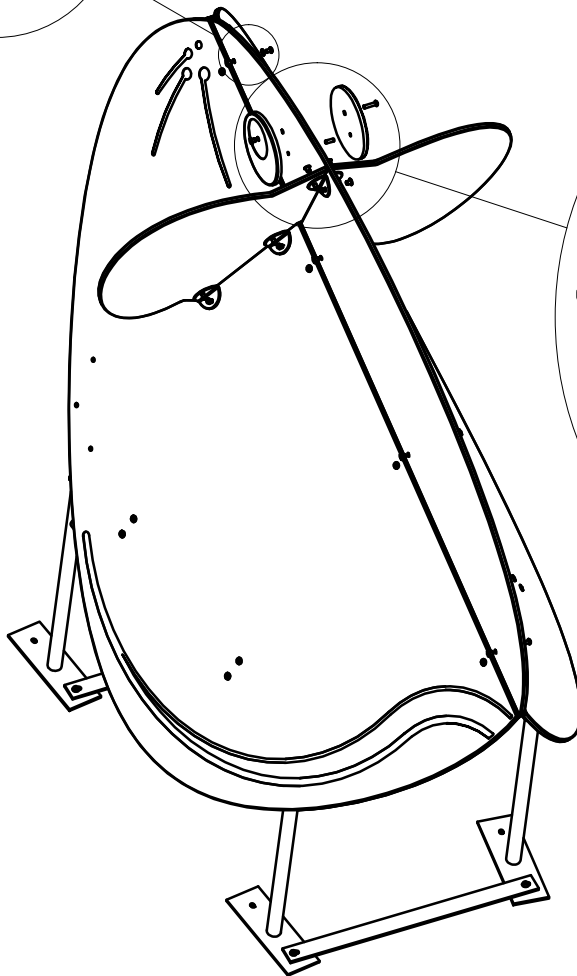
washer DIN 125 - Ø8,4 - A2;

RAMPA round nut type RF - M8;



installation: step 3

1:20



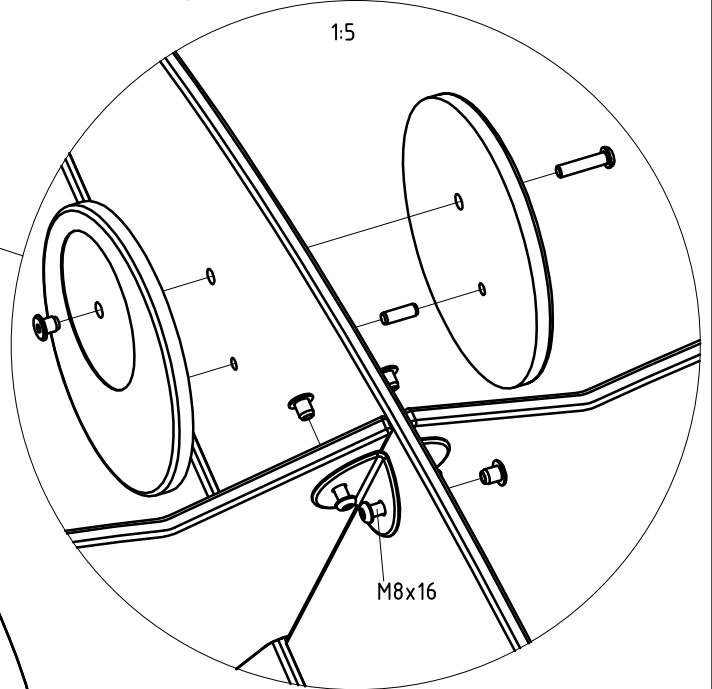
1x screw connection eyes:

consisting of:

oval-head security screw - M8x35 - A2;

RAMPA round nut type RF - M8;

cylinder pin ISO 2338 - Ø8x24 - A2;



screw connection ears:

consisting of:

10x oval-head security screw - M8x12 - A2;

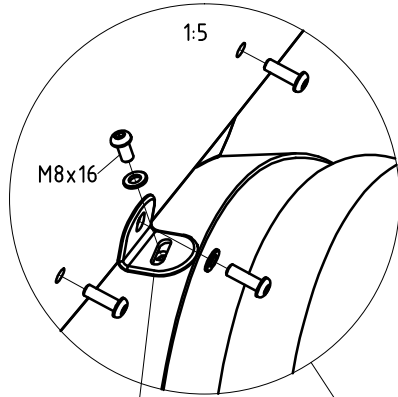
1x oval-head security screw - M8x16 - A2;

11x RAMPA round nut type RF - M8;

screw connection:

consisting of:

- 6x oval-head security screw - M8x25 - A2;
- 2x oval-head security screw - M8x16 - A2;
- 4x washer DIN 125 - ϕ 8,4 - A2;

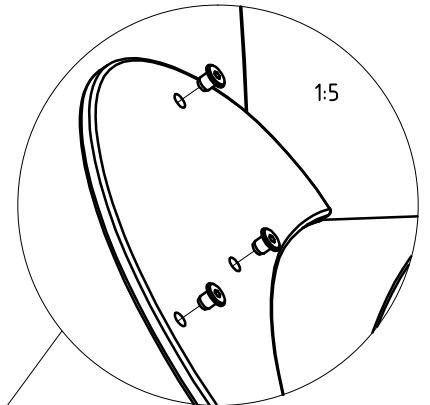


angle no. 2 (see stamped number)

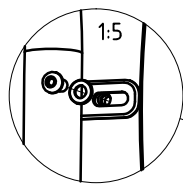
installation: step 4

1:20

- 6x RAMPA round nut type RF - M8;

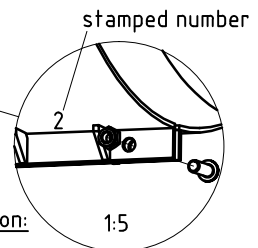
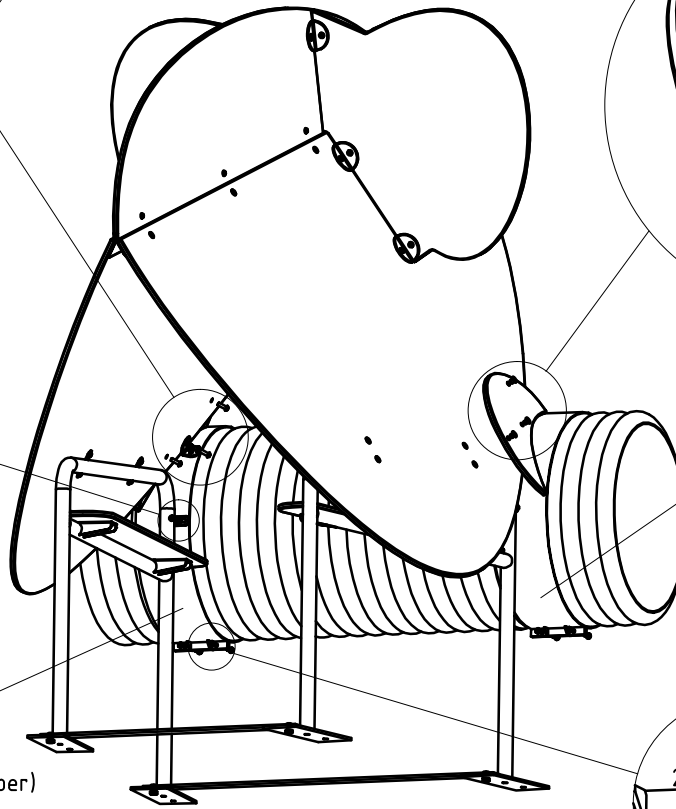


clip collar no. 1 (see stamped number)



- 2x screw connection:
consisting of:
oval-head security screw - M8x16 - A2;
washer DIN 125 - ϕ 8,4 - A2;

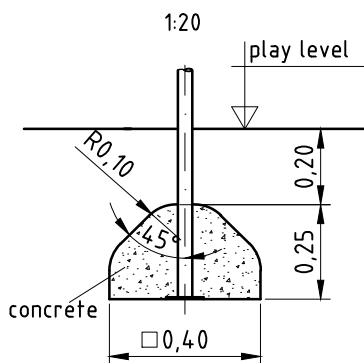
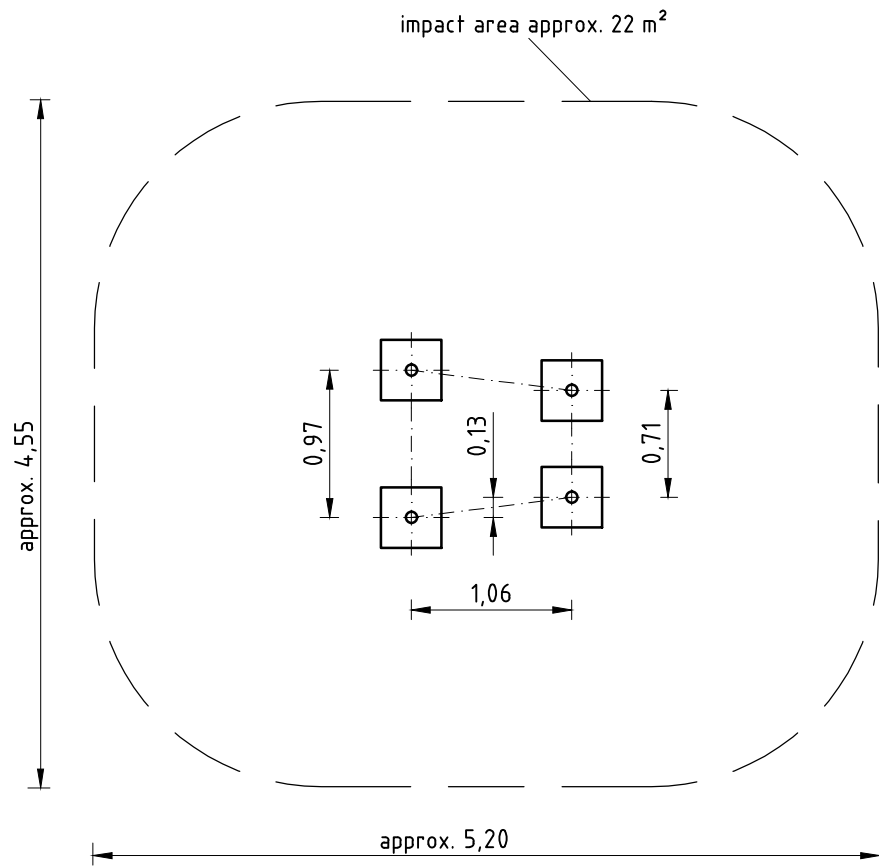
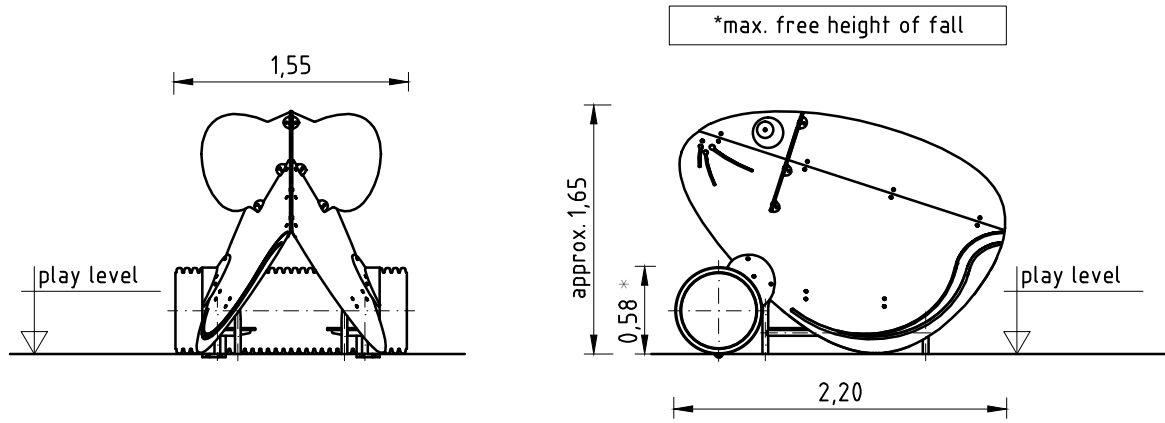
clip collar no. 2 (see stamped number)



4x screw connection:

consisting of:

- oval-head security screw - M8x25 - A2;
- lock nut DIN 985 - M8 - A2;



Item: **0-39040-000**
K&K Mouse house

Order:

1292118

Location:

Building Project:

1 x SFWZ0000001 Security TORX wrench TR40

per SC	Total	K&K-Item	Marking
1 x	1 x	3490081	Security TORX wrench TR40



1 x SFWZ0000002 Security TORX wrench TR45

per SC	Total	K&K-Item	Marking
1 x	1 x	3490033	Security TORX wrench TR45



2 x SFWZ0000012 Lubricating metal (30g box) incl. brush

per SC	Total	K&K-Item	Marking
1 x	2 x	5300039	Lubricating metal box à 30g
1 x	2 x	5200026	Brush for lubricating metal

