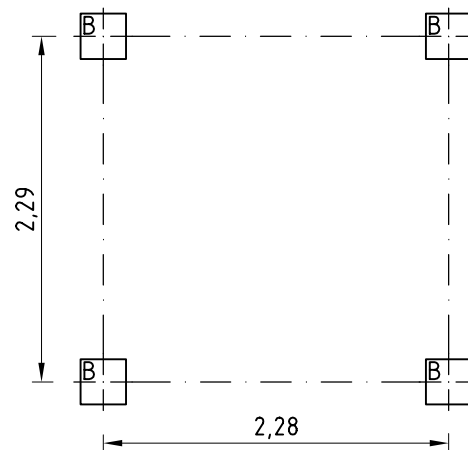
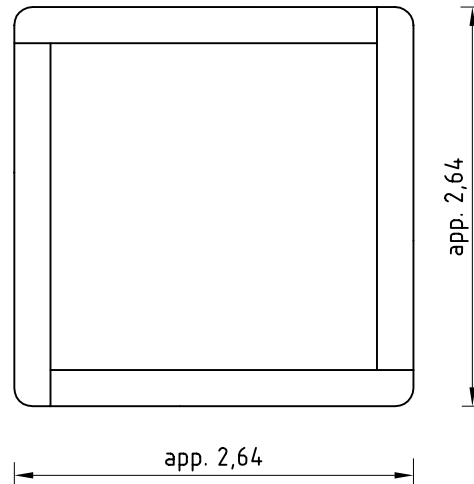
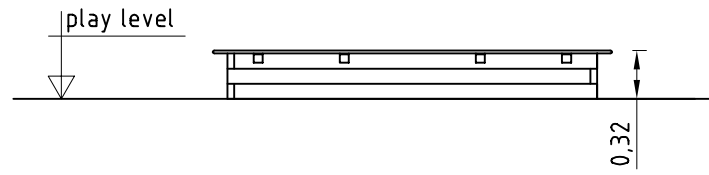


1. Assign location of equipment considering the space requirement.
2. Excavate soil for foundations, according to drawing.
3. Put pre-assembled side parts of sand box acc. to their mark (1-1, 2-2,) and together with angle brackets into holes of foundations.
4. **Attention! For installation of the pre-assembled components the screws have to be lubricated with installation paste! Tighten all screws after having aligned all components.**

Screw connections:

- side parts of sand box:
 - cup square bolt DIN 603 - M12 x 65
 - washer DIN 125 - 13
 - self-securing nut DIN 986 - M12
- 5. Grout in foundations with compressed concrete PG75, chamfer the edges and cover with sand 0,20 (according to EN 1176 - 1)
- 6. Release for play after concrete foundations have set.
- 7. Check all screw connections after one month, and if necessary screw down again.

Tools: socket spanner 19



Typ B
scale 1:20

