

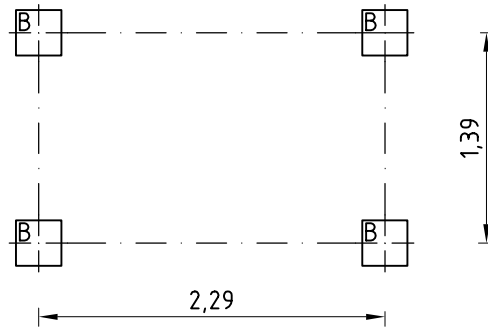
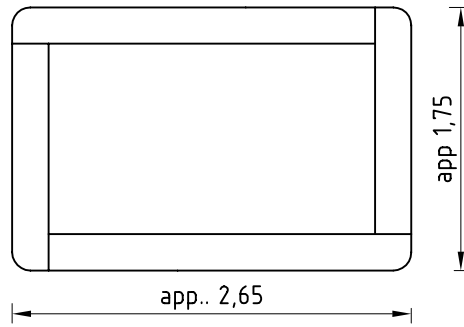
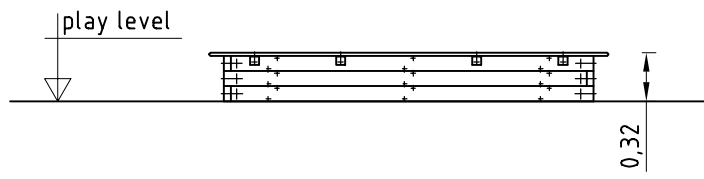
1. Assign location of equipment considering the space requirement.
2. Excavate soil for foundations, according to
3. drawing.  
Put pre-assembled side parts of sand box acc. to their mark (1-1, 2-2, ?) and together
4. with angle brackets into holes of foundations.

**Attention! For installation of the pre-assembled components the screws have to be lubricated with installation paste! Tighten all screws after having aligned all components.**

Screw connections:

- side parts of sand box:
    - cup square bolt DIN 603 - M12 x 65
  - 5. - washer DIN 125 - 13
    - self-securing nut DIN 986 - M12
- Grout in foundations with compressed
6. concrete PG75, chamfer the edges and cover
  7. with sand 0,20 (according to EN 1176 - 1)
- Release for play after concrete foundations have set.
- Check all screw connections after one month, and if necessary screw down again. Cover screw-head with protecting cap.

Tools: socket spanner 19



Typ B  
scale 1:20

