

1. Assign location of equipment considering the space requirements (impact area). Slide direction recommended: north-east or in half-shade of trees.
2. Excavate soil for foundations, according to drawing.
Please note: To achieve maximum stability and safe installation, a moderate level of soil solubility is required.
3. Pour in a drain layer of gravel of approx. 10 cm thickness between the bottom of the tubular pedestals and plain base of foundation.
4. Insert reinforcing steel into the corresponding holes of the tubular pedestals.
5. Place posts type A (see foundation layout) according to the corresponding number into the respective foundation hole. Play level mark (=aluminium blind rivet) complies with the installation depth. Align every post by means of the play level mark facing into the same direction (see detail or foundation layout).

For installation of the pre-assembled components and/or single parts, the screws slightly have to be lubricated with installation paste! Screw together platform and post by using the middle hole in the fastening bracket. Install the slide chute exit with an inclination of 5° in sliding direction.

Tighten all screws after having aligned all components.

Screw connections see details in attached list of screw cases.

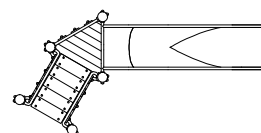
We recommend not to insert the red protection caps enclosed before first maintenance as they are only suitable for one-time use (see description in item No. 8).

6. Grout foundations with compressed concrete C20/25, chamfer and round off the edges, cover the foundations with a surface which meets the requirements for impact attenuation so that the critical fall height of the surfacing is equal to, or greater than, the free height of fall of the equipment (acc. to EN 1176-1). The run-out section fall zone must have surfacing with a critical fall height of at least 1000 mm (acc. to EN 1176-3).
- 7.
8. Release for play after concrete foundations have set.
9. Check all screw connections acc. to maintenance instructions after 4-5 weeks and retighten, if necessary. Afterwards cover the screw heads with red protection caps by placing them onto the base part. Strongly pound them (e.g. by using a plastic mallet) until they audibly snap into the base part groove.

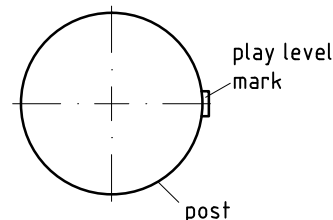
Please ensure that all special tools supplied (e.g. Allen key for secured Allen screws etc.) and all specific documents which are or may be useful for safety management acc. to EN 1176-7 (e.g. invoice, delivery note, order acknowledgement, installation instructions, maintenance instructions) are forwarded to the persons responsible.

**Necessarily insert all attachment parts (infills, slide entrance etc.) before tightening the screws.
It is NOT possible to insert them afterwards.**

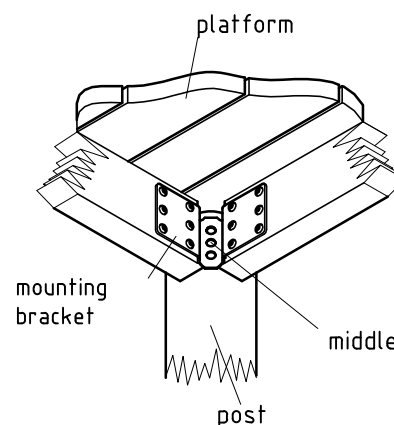
platform orientation
scale 1:100

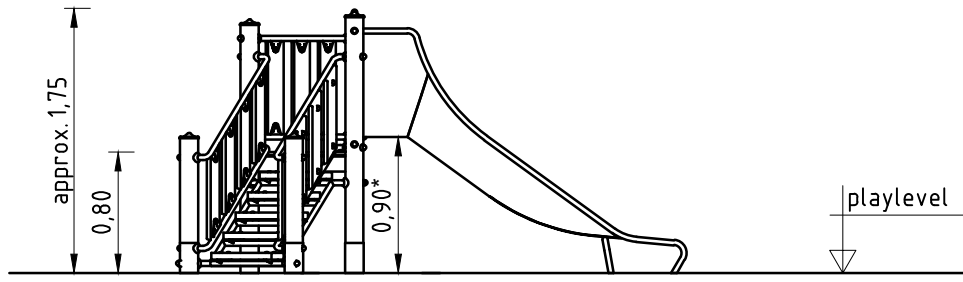


Detail play level mark
scale 1:5

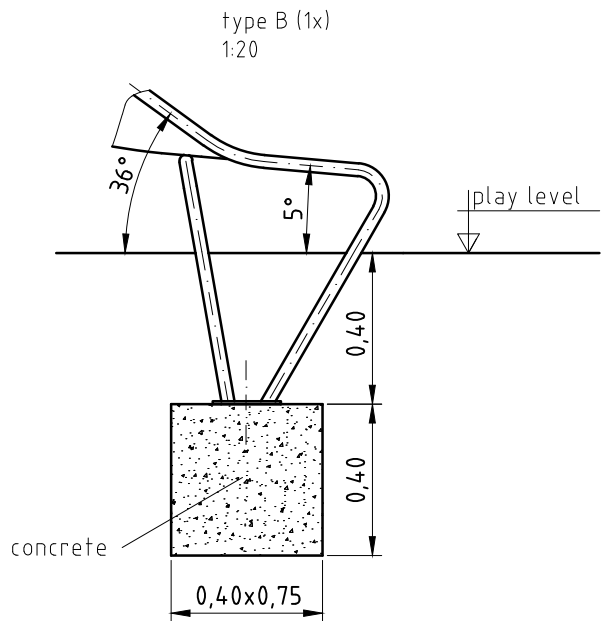
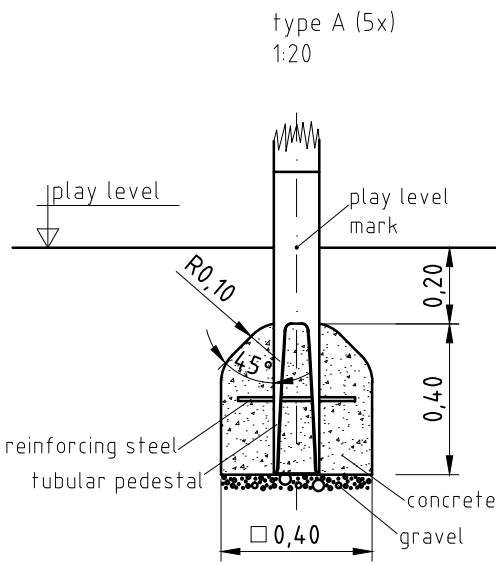
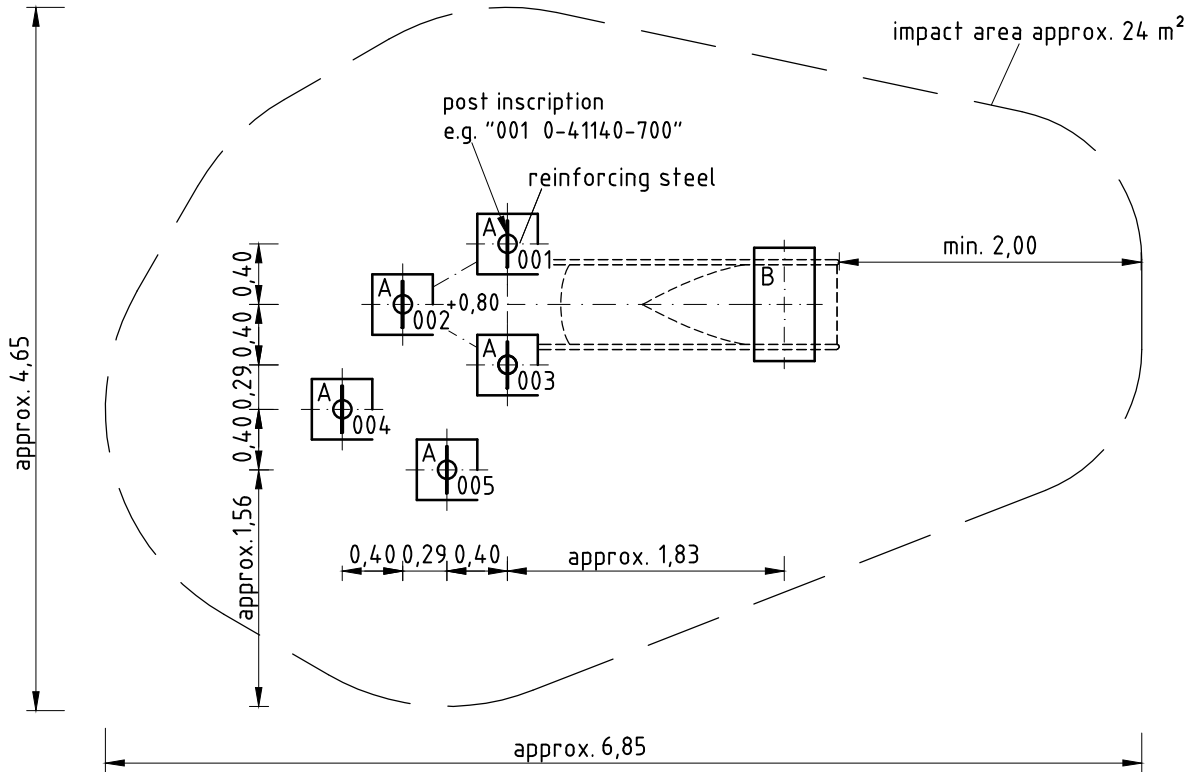


platform fastening
scale 1:10





* maximum free height of fall



Item: **0-41140-700**
K&K Combi slide (0,80)

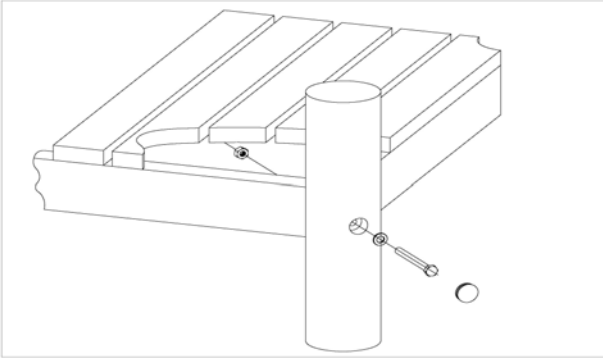
Order:

1299090

Location:

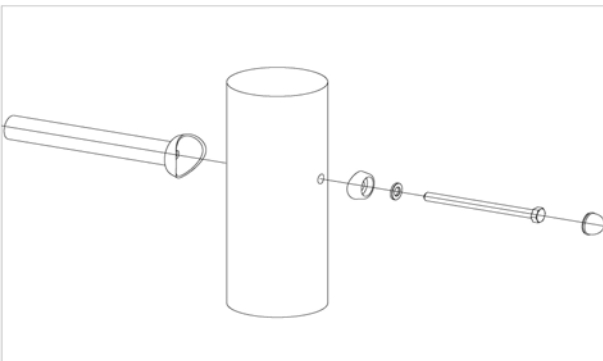
Building Project:

3 x SFRS1200001 Platform at robinia posts, nut on platform side



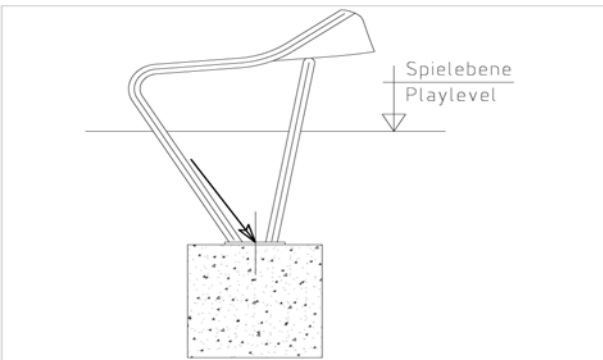
per SC	Total	K&K-Item	Marking
1 x	3 x	3400700	Hexagon head screw M12 x 120 DIN931 A2 with screw security coating/FGB red
1 x	3 x	3300016	Grey domed plastic cover cap SL 36 G
1 x	3 x	3430129	Washer Ø 14 DIN1440 A2
1 x	3 x	3430021	Lock nut M12 DIN985 A2

20 x SFRS1210001 Standard bolting for parapet, handrail, slide etc. at robinia posts



per SC	Total	K&K-Item	Marking
1 x	20 x	3300054	Screw cap - lower part, domed M12 colour red/RAL 2002 PA6
1 x	20 x	3300055	Screw cap - upper part M12 P2 colour red/RAL 2002 PA6
1 x	20 x	3430025	Washer Ø 13 DIN125 A2
1 x	20 x	3400702	Hexagon head cap screw M12 x 160 DIN931 A2 with screw security coating FGB red

1 x SFAS1070006 Slide run-out section (up to 2,00 m) on foundation stone bolt assembly



per SC	Total	K&K-Item	Marking
2 x	2 x	1070365	Set of stone bolts for slide run-out section M12x160

5 x SFES1270007 Reinforcing steel for tubular pedestals



per SC	Total	K&K-Item	Marking
1 x	5 x	2130000	Reinforcing steel Ø 10 x 310 DIN 488

Item: **0-41140-700**
K&K Combi slide (0,80)

Order:

1299090

Location:

Building Project:

1 x SFWZ0000013 Lubricating metal, twin bag (2 x 4 g)



per SC	Total	K&K-Item	Marking
2 x	2 x	5300024	Metaflux fitting lubricant 2x4 gr.