

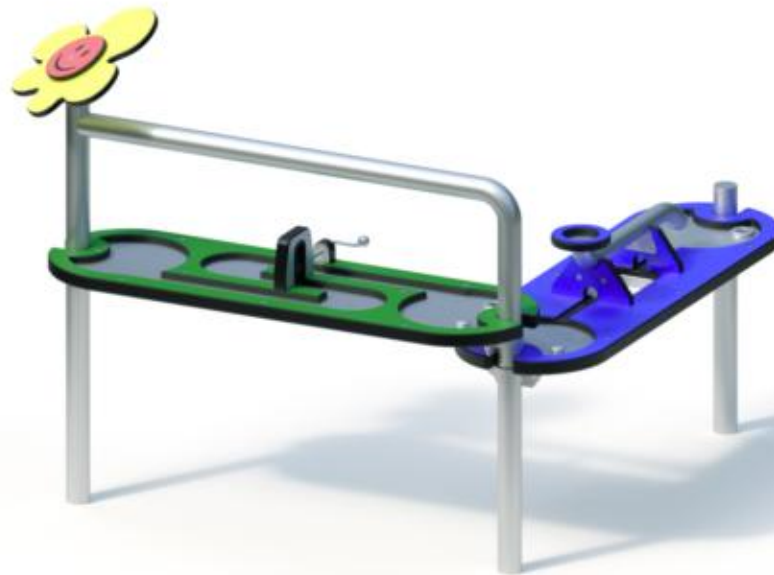
play equipment

Water course

item number

039100000A

product description (page 1)



Attachment parts

- bow-shaped tube and support tube from stainless steel Ø 60,3 x 2,9 mm
- flower made from highly weather-resistant coloured HPL panel, 13 mm thickness
- water troughs made from highly weather-resistant coloured HPL panels 13 mm and 20 mm thickness, and stainless steel elements. Attachment to tubular construction by means of stainless steel clamps.
- water wheel from rubber with crank drive
- a gargoyle for water trough attachment is available at extra charge (item no. 0-33126-000)
- metal components: stainless steel

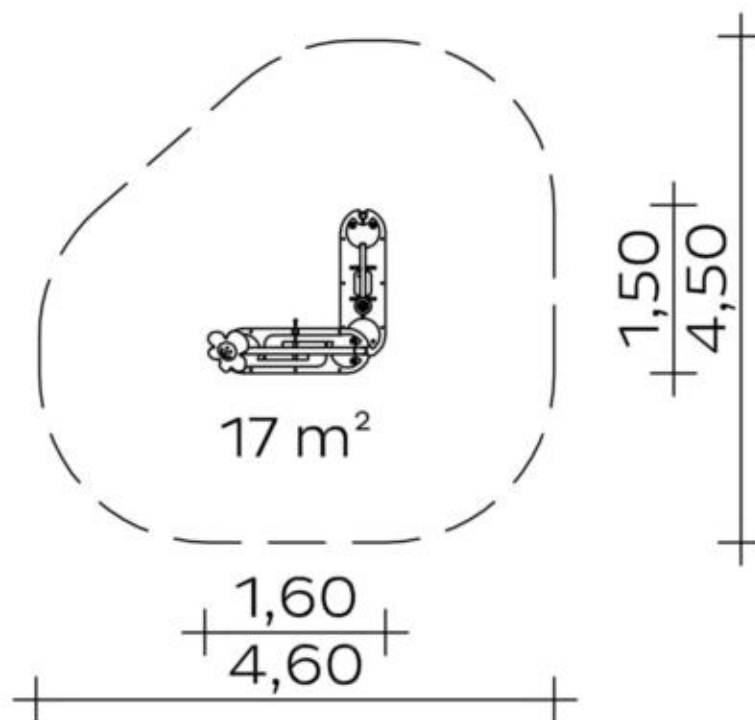
play equipment

Water course

item number

039100000A
<https://kaiser-kuehne.com/products/?lang=en>

product data



(without scale)

installation

play equipment [m]	l	1,60
	w	1,50
	h	1,28
minimum space [m]	l	4,60
	w	4,50
	h	1,28
impact area [m²]		17,00
free height of fall [m]		0,68
number of mechanics		1
assembly time [hrs]		1
lifting device		no
single weight [kg]		25
total weight [kg]		70

foundations

l [m]	w [m]	h [m]	vol [m³]	qty
0,30	0,30	0,30	0,027	3
			0,081	3

usage

areas of use	supervised playgrounds	
activities	social activity	manual activity
age groups	1+	
number of users	8	
inclusion		

play equipment
item number

Water course
039100000A

variants

17202 *Classic*



17203 *Sweden*



31916



31976



31977



31978



31979



31980



31981



31982



31983



31984



31985



31986



31987



play equipment

Water course

item number

039100000A

variants

31988

