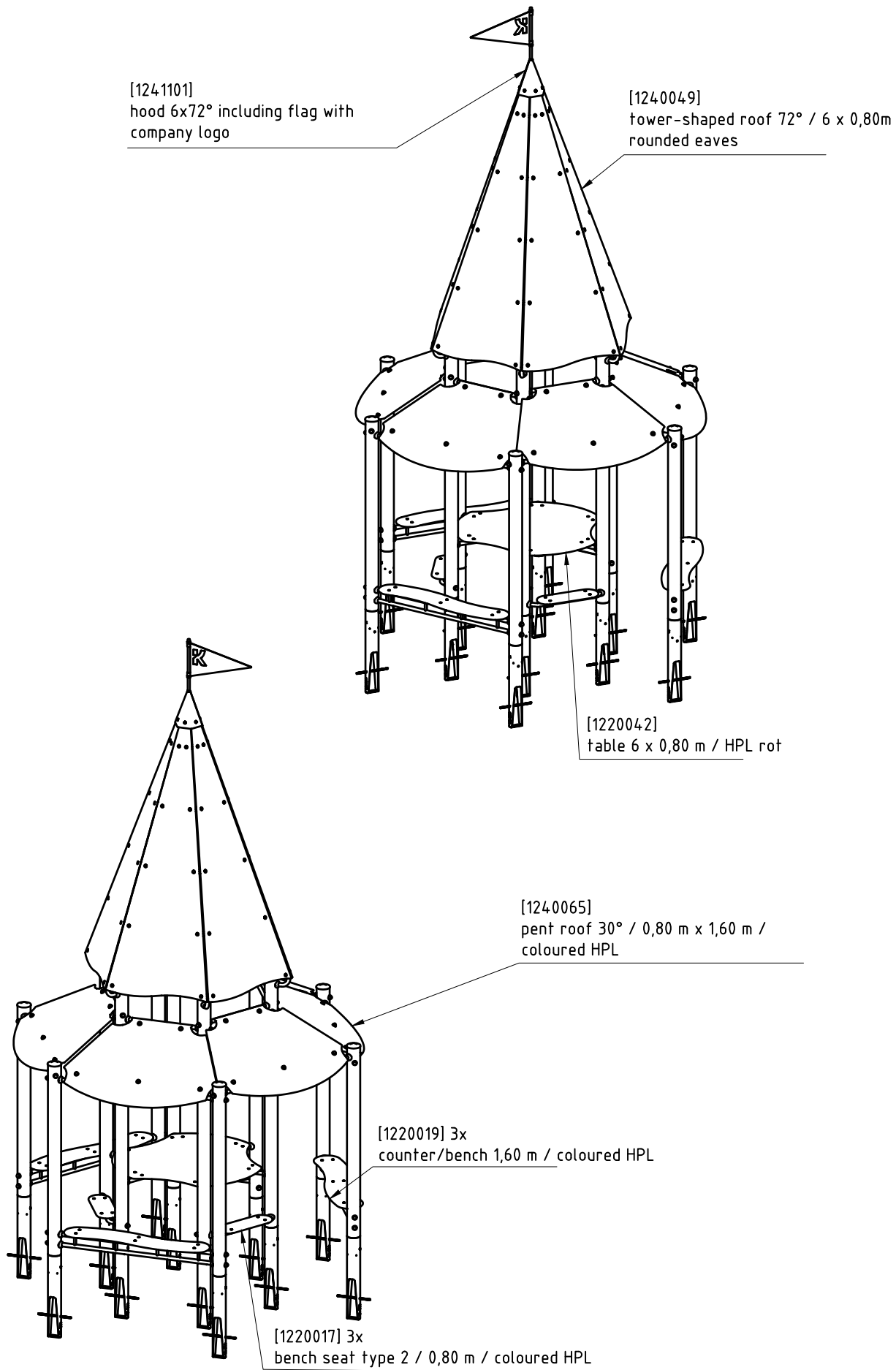


PERSPECTIVE VIEW



ASSEMBLY INSTRUCTIONS

Please read the following instructions carefully before starting assembly!

- Determine the location of the appliance taking into account the total space required including the required impact area (see "Plan view").
- For a stable installation with the foundation dimensions specified in these installation instructions, medium-displacement soil types are required.
- A layer of coarse gravel at least 10 cm thick is required below the foundations for drainage. The uprights are placed directly on the coarse gravel layer.
- Insert the supplied mounting irons into the holes provided in the posts. These are used for vertical anchoring in the concrete foundation.
- The support posts are numbered consecutively at the bottom ("...-001", "...-002", "...-..."). Place the posts in the specified positions (see "Foundation plan").
- The stand posts are each fitted with an aluminium blind rivet to mark the playing level
- The play level markings indicate the installation depth and post orientation for each stand post.
- All play level markings point in the same direction when the play equipment is fully assembled. In the illustration on the "Foundation plan", all markings point to the right (3 o'clock position).
- Start with a component that is connected to at least two uprights to create an independent base from which further components and uprights can be added.
- Connect the uprights and components using the fastening materials supplied in accordance with the "Screw-fastening list".
- Initially connect all components and uprights loosely with just a few turns of the screws until the last connection is made to allow room for the insertion of further elements. It is NOT possible to insert components into the firmly bolted play equipment!
- The threads of all screw connections must be clean and lightly greased with the assembly paste supplied before use to prevent the threaded connection from seizing due to cold welding.
- Once all uprights and components have been connected to the play equipment, all screw connections must be firmly tightened, taking into account the horizontal and vertical alignment of the entire play equipment.
- Only fill the foundations with C20/25 quality tamped concrete after the entire play equipment has been completely and firmly bolted together. The foundation edges must be bevelled or rounded in accordance with the specifications in the foundation details.
- The play equipment may only be released for use after the concrete foundations have completely set.

The foundations must be covered with a floor material that has an appropriate level of shock absorption for the fall height (see EN 1176-1).

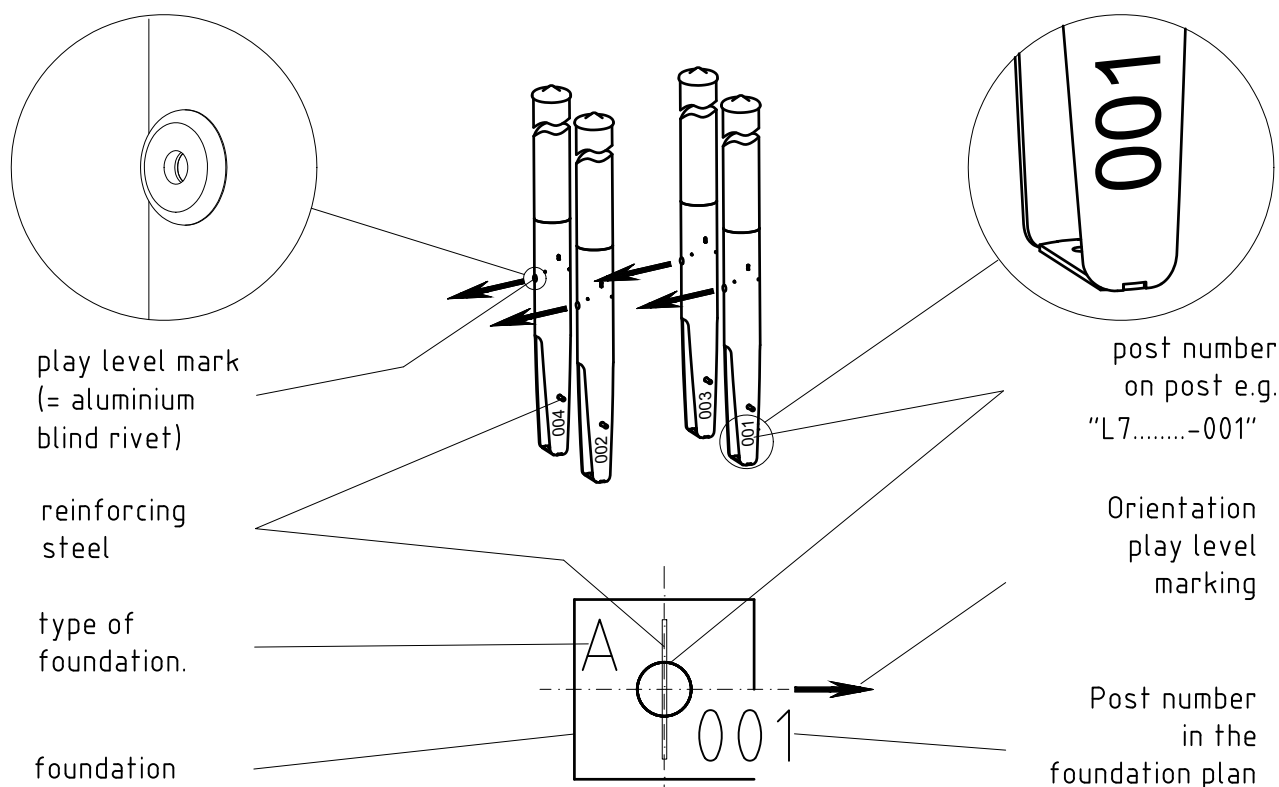
Supplementary installation instructions for wooden posts (KAROLAM)

- The protective caps supplied to cover the screw heads in wooden posts are only suitable for one-off installation. They are only fitted after all screw connections have been tightened as part of the first maintenance after 4-5 weeks.
 - Countersunk post hole (Ø32 mm):
Press the cover cap into the countersunk hole
 - Non countersunk screw connections:
Place the top part of the protective cap on the bottom part and tap it into the ring groove using a hammer until you hear it click into place.

After installation

- All screw connections must be checked after 4-5 weeks in accordance with the maintenance instructions and retightened if necessary.
- All special tools supplied with the device (e.g. Allen key for secured screws etc.) must be passed on to the responsible authorities (e.g. playground operator).
- All device-specific documents that are or could be important for safety management in accordance with EN 1176-7 (e.g. invoice, delivery note or order confirmation, assembly instructions and maintenance instructions) must be passed on to the responsible bodies (e.g. playground operator).

numbering/orientation/Labelling of posts (exemplary illustration)



FRONT VIEW

* max. free height of fall



0,75 *

5,80

play level

FOUNDATION PLAN

1,71

impact area 32m²

0,00

play level mark

0,69

1,39

2,08

2,77

2,36

0,80

0,00

0,40

1,21

1,60

2,40

3,96

4,48

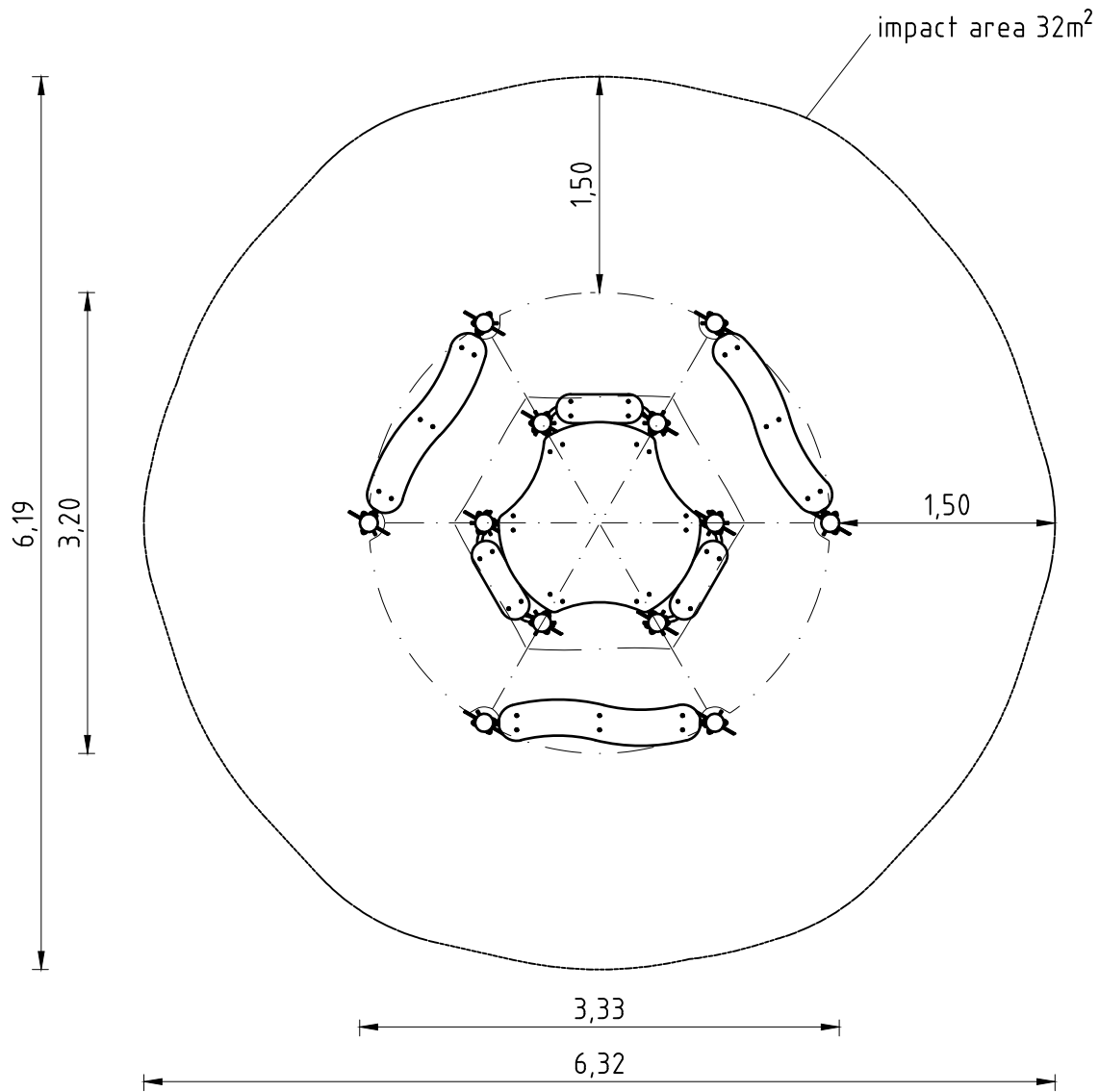
foundations (on site)

12x 0,40 m x 0,40 m x 0,40 m

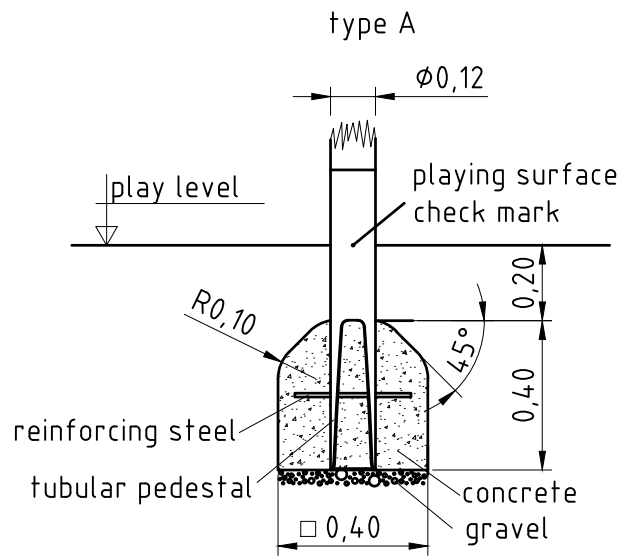
(approximate) concrete needs

0,768 m³

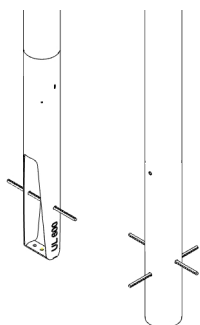
TOP VIEW & IMPACT SURFACE



FOUNDATION DETAILS



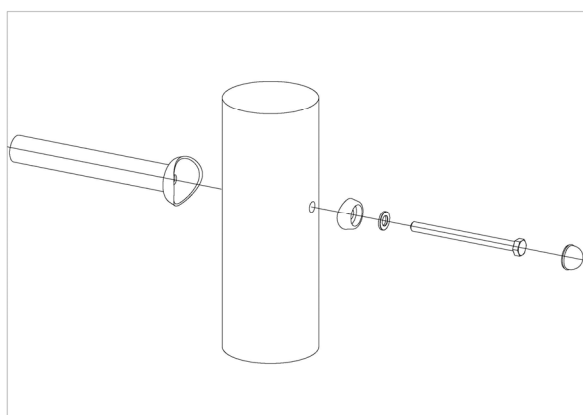
12 x SFAS1270001 reinforcing steel bar for posts



per set	total	item no.	material short text
1	12	2130000	reinforcing steel Ø 10 x 310 DIN 488

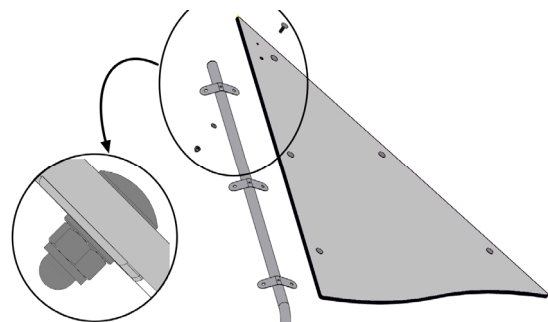
54 x SFRS1210001 standard bolting of components to Robinia posts in non-countersunk drilling

in non-countersunk drilling



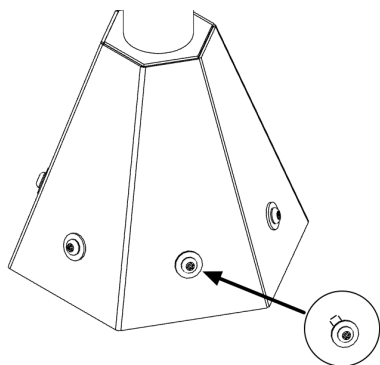
per set	total	item no.	material short text
1	54	3400702	hexagon head cap screw M12x160 DIN931 A2 coated with thread locking compound
1	54	3430025	washer Ø 13 DIN125 A2
1	54	3300054	protective screw cap - lower part, domed M12
1	54	3300055	protective screw cap - upper part, M12

60 x SFAS1240029 HPL panel fastening to roof pipe support



per set	total	item no.	material short text
1	60	3430011	hexagon cap nut M10 DIN986 A2
1	60	3430014	washer Ø 10,5 DIN125 form B A2
1	60	3400138	mushroom head screw square neck M10x30 DIN 603 A2

6 x SFAS1240035 Roof hood fastening on HPL panels



per set	total	item no.	material short text
1	6	3400464	Dome head security screw-M10x20-Resistorx T45 A2
1	6	3430014	washer Ø 10,5 DIN125 form B A2

1 x SFWZ0000002 Security TORX wrench TR45

per set	total	item no.	material short text
1	1	3490033	Allen key security TORX TR45



1 x SFWZ0000012 lubricating metal (30 g box) incl. brush

per set	total	item no.	material short text
1	1	5200026	brush for lubricating metal
1	1	5300039	lubricating metal box 30g

