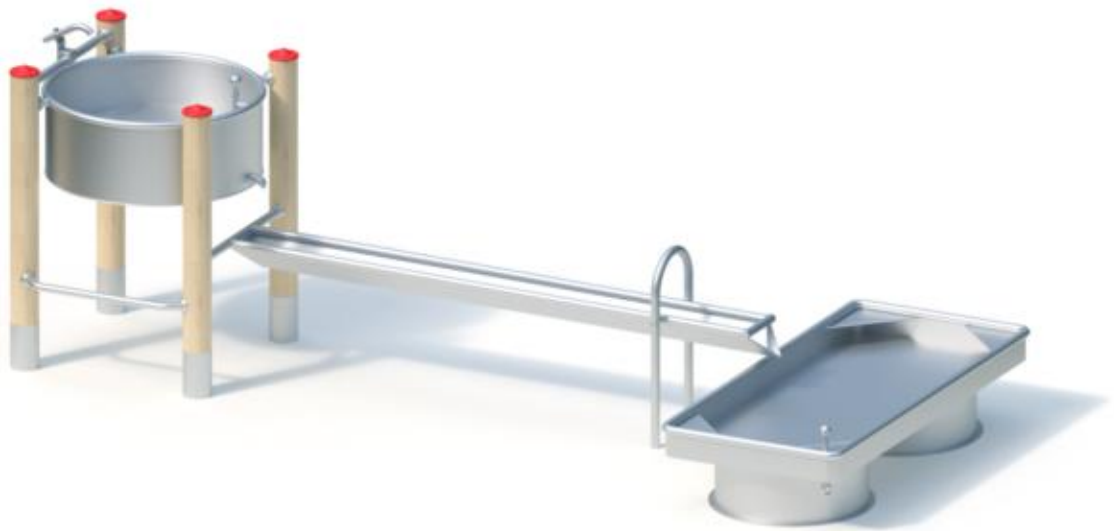


play equipment

**Water play structure**

item number

**034050702****product description** (page 1)Posts

Laminated Robinia timber Ø 120 mm with cylindrical milling. End-grain surfaces are covered by non-detachable protective stainless steel.

Stainless steel tubular pedestal for concrete-cast foundation and for fixed mounting to round Robinia posts, Ø 120 mm, below playing surface.

Attachment parts

- fastening rail from stainless steel tube Ø 38 x 2,5 mm, with twist prevention
- (cranked) ladder rung from stainless steel tube Ø 33,7 x 2 mm

Gargoyle item no. 0-33125-000

Welded stainless steel construction with a clamping device for tube Ø 38 mm, with receptacle for a water hose plug 1/2 in resp. 3/4 in (for instance Gardena® or similar type)

Water storage basin with one run-off

Base area: Ø 0,68 m

Welded stainless steel construction with one tubular run-off. Conical rubber closing with locking mechanism for complete water extraction. Sheet metal thickness: 2 mm at least / tube Ø 33,7 mm.

Water trough type M5 2,40 m

Welded stainless steel construction. Sheet metal thickness: min. 2 mm / tube Ø 38 mm. For post attachment and with additional trough support for inclined installation corresponding to water feed or water run-off. Inclined run-off.

Water table (0,25) item no. 0-33445-000

Base area: 0,84 x 1,84 m

Total height: 0,40 m

Welded stainless steel construction with one tubular run-off and four storage surfaces. Conical rubber closing with locking mechanism. Sheet metal thickness: 2 mm at least / tube Ø 38 mm.

At extra charge, there are appropriate ring-shaped concrete foundations (015165) for flange fastening and concrete form blocks (015170) for masonry works to compensate different levels or for a safe installation with loose fall protection surfacing (sand,

play equipment

**Water play structure**

item number

**034050702****product description** (page 2)

gravel etc.)

Metal components: stainless steel.

Robinia timber is furnished with water-repellent, breathable protective coating. Besides protection from moisture, that treatment reduces crack formation. Thanks to a specific fastening adaptor, forces arising from the modular attachment parts are directly derived into the posts. Tamper-proof screw connections thanks to protective screw caps.

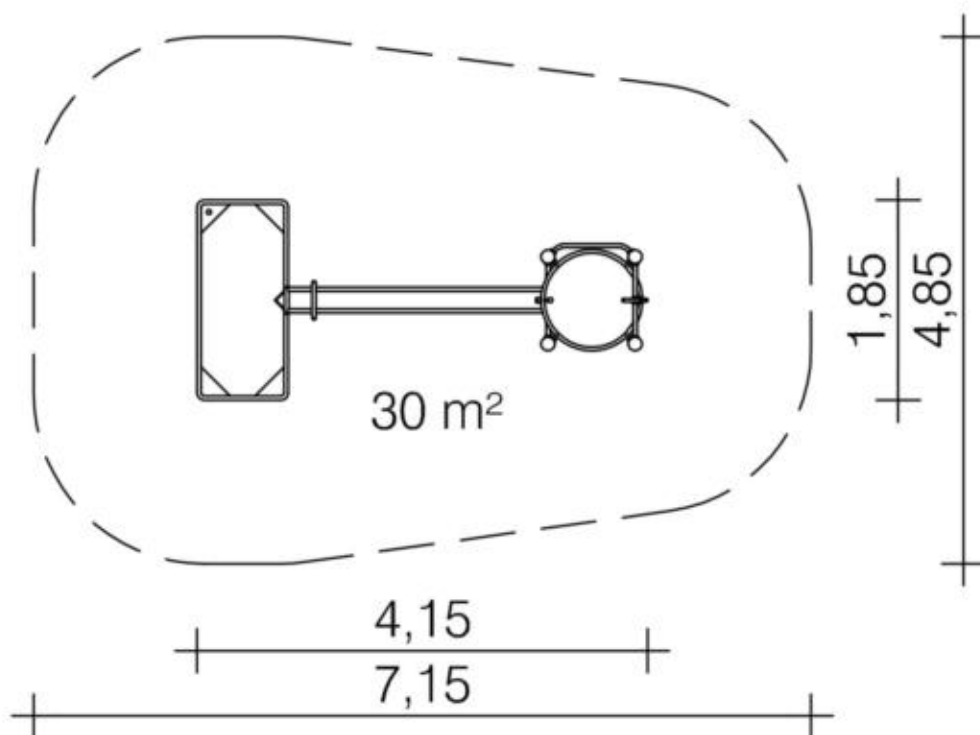
play equipment

item number

## Water play structure

**034050702**
<https://kaiser-kuehne.com/products/?lang=en>

### product data



(without scale)

### installation

play equipment [m]	l	4,15
	w	1,85
	h	1,40
minimum space [m]	l	7,15
	w	4,85
	h	1,40
impact area [m <sup>2</sup> ]		30,00
free height of fall [m]		0,95
number of mechanics		2
assembly time [hrs]		1
lifting device		no
single weight [kg]		85
total weight [kg]		220

### foundations

l [m]	w [m]	h [m]	vol [m <sup>3</sup> ]	qty
0,40	0,40	0,40	0,064	4
0,50	0,50	0,50	0,125	1
			0,381	5

### usage

areas of use	supervised playgrounds	
activities	manual activity	social activity
age groups	2+	
number of users	13	

inclusion	Meeting opportunity	Individual games
	Exploratory game	Feeling
	Group games	Fumbling

play equipment

## **Water play structure**

item number

**034050702**

### **variants**

17067    *Classic*

