

play equipment

Water play structure

item number

034050502**product description** (page 1)Posts

Posts made from stainless steel tubes Ø 12 cm covered by non-detachable protective stainless steel caps.

Attachment parts

- fastening rail from stainless steel tube Ø 38 x 2,5 mm, with twist prevention
- (cranked) ladder rung from stainless steel tube Ø 33,7 x 2 mm

K&K Gargoyle item no. 0-33125-000

Welded stainless steel construction with a clamping device for tube Ø 38 mm, with receptacle for a water hose plug 1/2 in resp. 3/4 in (for instance Gardena® or similar type)

K&K Water storage basin

Base area: Ø 0,68 m

Welded stainless steel construction with one tubular run-off. Conical rubber closing with locking mechanism for complete water extraction. Sheet metal thickness: 2 mm at least / tube Ø 33,7 mm.

K&K Water trough type M5 2,40 m

Welded stainless steel construction. Sheet metal thickness: min. 2 mm / tube Ø 38 mm. For post attachment and with additional trough support for inclined installation corresponding to water feed or water run-off. Inclined run-off.

K&K Water table (0,25) item no. 0-33445-000

Base area: 0,84 x 1,84 m

Total height: 0,40 m

Welded stainless steel construction with one tubular run-off and four storage surfaces. Conical rubber closing with locking mechanism. Sheet metal thickness: 2 mm at least / tube Ø 38 mm.

At extra charge, there are appropriate ring-shaped concrete foundations (015165) for flange fastening and concrete form blocks (015170) for masonry works to compensate different levels or for a safe installation with loose fall protection surfacing (sand, gravel etc.)

Metal components: stainless steel. Thanks to a specific fastening adaptor, forces arising from the modular attachment parts are

play equipment

Water play structure

item number

034050502**product description** (page 2)

directly derived into the posts. Tamper-proof screw connections thanks to screw with security socket.

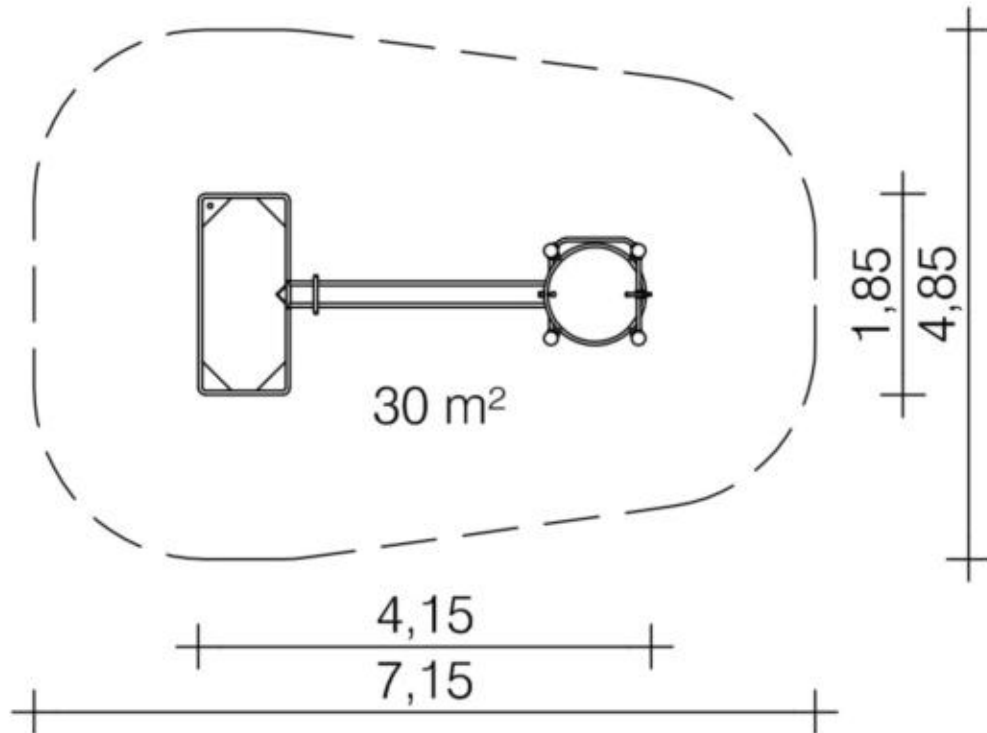
play equipment

item number

Water play structure

034050502
<https://kaiser-kuehne.com/products/?lang=en>

product data



(without scale)

installation

play equipment [m]	l	4,15
	w	1,85
	h	1,40
minimum space [m]	l	7,15
	w	4,85
	h	1,40
impact area [m²]		30,00
free height of fall [m]		0,95
number of mechanics		2
assembly time [hrs]		1
lifting device		no
single weight [kg]		85
total weight [kg]		220

foundations

l [m]	w [m]	h [m]	vol [m³]	qty
0,40	0,40	0,40	0,064	4
0,50	0,50	0,50	0,125	1
			0,381	5

usage

areas of use	supervised playgrounds	
activities	manual activity	social activity
	-	
age groups	2+	
number of users	13	
inclusion	Meeting opportunity	Individual games
	Exploratory game	Feeling
	Group games	Fumbling

play equipment

Water play structure

item number

034050502

variants

17066 *Classic*

