

play equipment

**House for water pump with handle**

item number

**033155502****product description** (page 1)Posts

Posts made from stainless steel tubes Ø 12 cm covered by non-detachable protective stainless steel caps.

Platforms

Platforms from boards of 30 mm thickness and all-round square-shaped joists 45 x 100 mm. Dried timber from Robinia, planed, milled and free from decay. Force-fitting fastening through specific stainless steel brackets with end-to-end bolt assembly. The pump platform is additionally covered by profiled stainless steel sheet.

Attachment parts

- vertical handles from stainless steel tube Ø 33,7 x 2 mm, as a climbing aid
- tent roof, 45° inclination, made from blue highly weather-resistant HPL panels, 13 mm thickness, fastening to stainless steel frame Ø 33,7 x 2 mm, with protective stainless steel hood on top

K&K Water pump item no. 0-33130-001

Suction pipe connection 1 ¼ in (pipe diameter at least ¾ in), welded stainless steel construction, fully encapsulated pump housing, pump mechanism with roller and anti-friction bearing. During winter season, a removal of the upper housing and the handle is indispensable, (winter) cover panel for the bottom part is included with delivery.

**Please note:**

The installation of the water pump to a pressure water pipe requires a K&K Valve combination (item no. 0-33190-000 or 0-33195-000).

If the water supply to the pump (through a clock timer or similar) is interrupted, the pump handle must be safeguarded against operation (for example by the K&K pump latch, item no. 1040639). This prevents a handle setback due to an increasing negative pressure.

Please also consider the basic technical details given in the installation instructions (such as spacing, pipe diameters etc.); upon request, you will receive them directly from K&K or by downloading the corresponding PDF from [www.kaiser-kuehne-play.com](http://www.kaiser-kuehne-play.com).

Metal components: stainless steel

Robinia timber is furnished with water-repellent, breathable protective coating. Besides protection from moisture, that treatment reduces crack formation.

play equipment

**House for water pump with handle**

item number

**033155502****product description** (page 2)

Thanks to a specific fastening adaptor, forces arising from the modular attachment parts are directly derived into the posts. Tamper-proof connections thanks to screws with security socket.

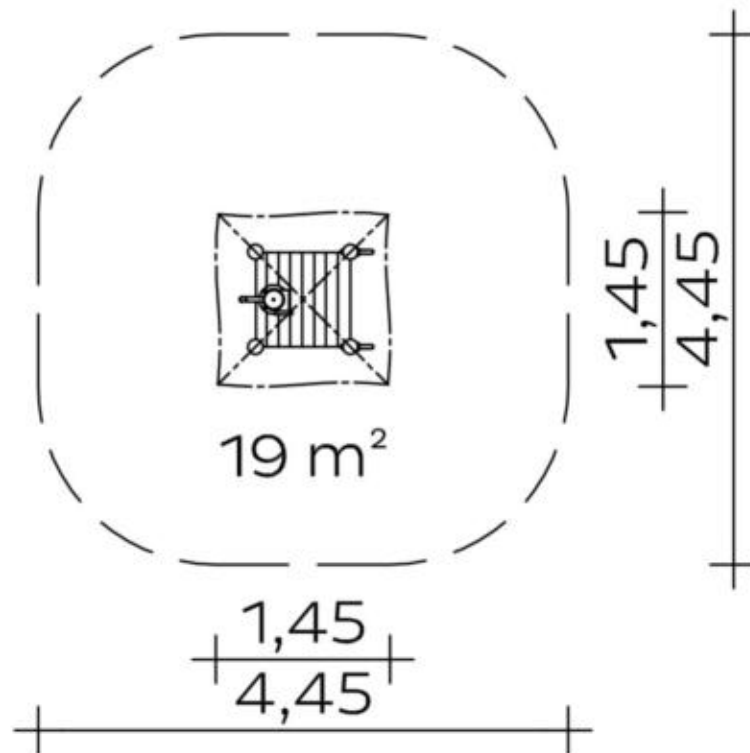
play equipment

item number

## House for water pump with handle

**033155502**
<https://kaiser-kuehne.com/products/?lang=en>

### product data



(without scale)

### installation

play equipment [m]	l	1,45
	w	1,45
	h	2,70
minimum space [m]	l	4,45
	w	4,45
	h	2,70
impact area [m²]		19,00
free height of fall [m]		0,40
number of mechanics		2
assembly time [hrs]		1
lifting device		no
single weight [kg]		45
total weight [kg]		255

### foundations

l [m]	w [m]	h [m]	vol [m³]	qty
0,40	0,40	0,40	0,064	4
			0,256	4

### usage

areas of use	public playgrounds
activities	
age groups	3+
number of users	2
platform heights	0,40
inclusion	

play equipment  
item number

## House for water pump with handle

### 033155502

#### **variants**

17024 *Classic*



17025 *Ice Palace*



27706 *Aloha*



27707 *Beach*



27708 *City*



27709 *Coral*



27710 *Jungle*



27711 *Mermaid*



27712 *Nature*



27713 *Ocean*



27714 *Pirate*



27715 *Safari*



27716 *Sky*



27717 *Sun*



27718 *Sunny Day*



play equipment

## House for water pump with handle

item number

**033155502**

### variants

27719 *Sweden*

