

play equipment

**Water play structure**

item number

**034036000****product description** (page 1)Gargoyle item no. 0-33125-000

Weight: 2 kg as a whole

Welded stainless steel construction, clamping device for tube attachment Ø 38 mm, facilitating garden hose connection size 1/2 in resp. 3/4 in (for instance Gardena® or equivalent).

Water trough type S1 1,60 m

Welded stainless steel construction, sheet metal thickness: 2 mm at least / tube Ø 38 mm. With additional pair of supports for inclined installation corresponding to water feed or water run-off. Inclined run-off, including flexible flap with stainless steel knob and reinforced rubber blade, clamping device for tube attachment Ø 38 mm

Water table (0,25) item no. 0-33445-000

Base area: 0,84 x 1,84 m

Total height: 0,40 m

Welded stainless steel construction with one tubular run-off and four storage surfaces. Conical rubber closing with locking mechanism. Sheet metal thickness: 2 mm at least / tube Ø 38 mm.

At extra charge, there are appropriate ring-shaped concrete foundations (015165) for flange fastening and concrete form blocks (015170) for masonry works to compensate different levels or for a safe installation with loose fall protection surfacing (sand, gravel etc.)

Metal components: stainless steel

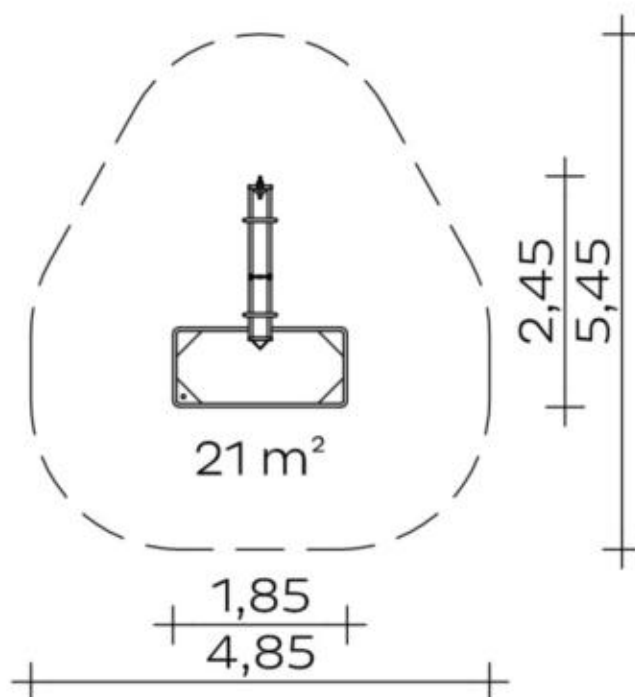
play equipment

item number

## Water play structure

**034036000**
<https://kaiser-kuehne.com/products/?lang=en>

### product data



(without scale)

### installation

play equipment [m]	l	2,45
	w	1,85
	h	1,00
minimum space [m]	l	5,45
	w	4,85
	h	1,00
impact area [m²]		21,00
free height of fall [m]		0,25
number of mechanics		2
assembly time [hrs]		1
lifting device		no
single weight [kg]		85
total weight [kg]		120

### foundations

l [m]	w [m]	h [m]	vol [m³]	qty
0,50	0,50	0,50	0,125	2
			0,250	2

### usage

areas of use	supervised playgrounds
activities	manual activity
age groups	2+
number of users	11

### inclusion

Meeting opportunity	Individual games
Exploratory game	Feeling
Group games	Fumbling

