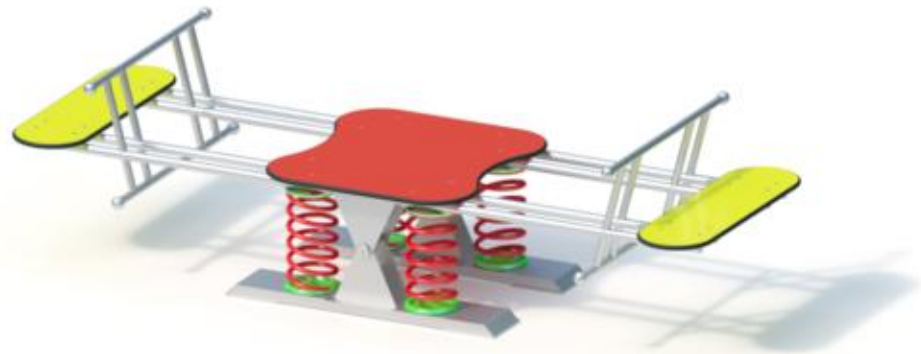


play equipment      **Spring see-saw**  
item number        **044280000**

**product description**      (page 1)



See-saw structure: stainless steel frame

Compression spring: spring steel wire Ø 20 mm

Seat: highly weather-resistant HighPressureLaminate of 20 mm thickness, theft-proof screw connections

Weight: 275 kg as a whole

including ground anchorage

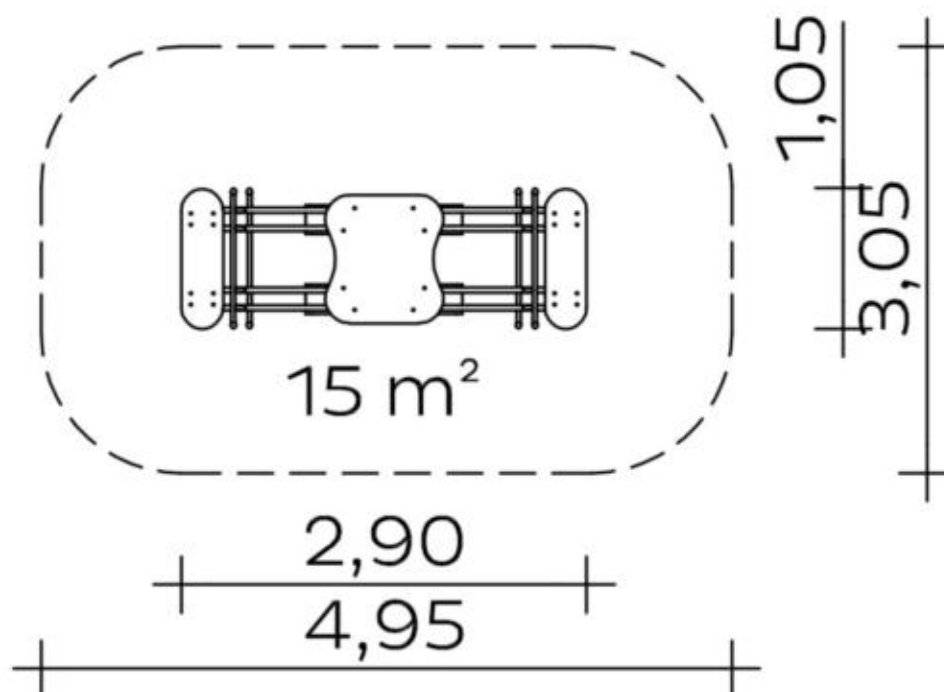
play equipment

## Spring see-saw

item number

**044280000**
<https://kaiser-kuehne.com/products/?lang=en>

### product data



(without scale)

### installation

play equipment [m]	l	2,90
	w	1,05
	h	0,80
minimum space [m]	l	4,95
	w	3,05
	h	0,80
impact area [m²]		15,00
free height of fall [m]		0,80
number of mechanics		0
assembly time [hrs]		0
lifting device		no
single weight [kg]		0
total weight [kg]		275

### foundations

l [m]	w [m]	h [m]	vol [m³]	qty
1,70	1,08	0,10	0,184	1
			0,184	1

### usage

areas of use	public playgrounds
activities	motion activity
age groups	4+
number of users	8

### inclusion

Meeting opportunity	Individual games
Functional play	Balancing
Group games	Coordination

play equipment  
item number

**Spring see-saw**  
**044280000**

**variants**

17681 *Classic*



17682 *Ice Palace*



28400 *Aloha*



28401 *Beach*



28402 *City*



28403 *Coral*



28404 *Jungle*



28405 *Mermaid*



28406 *Nature*



28407 *Ocean*



28408 *Pirate*



28409 *Safari*



28410 *Sky*



28411 *Sun*



28412 *Sunny Day*



play equipment

## **Spring see-saw**

item number

**044280000**

### **variants**

28413 *Sweden*

