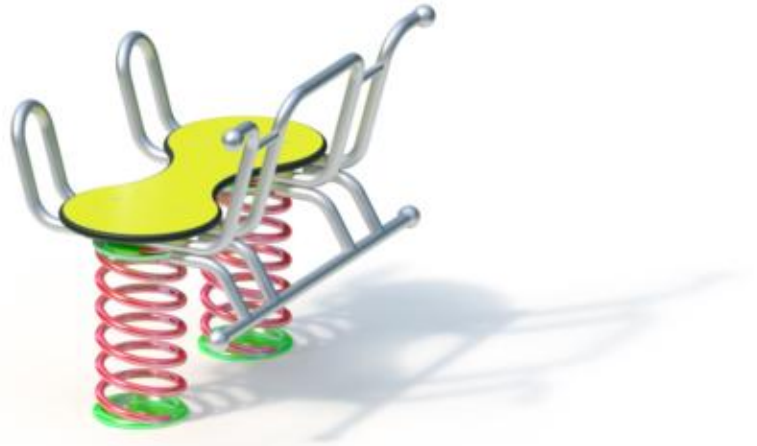


play equipment **Spring see-saw**
item number **044251000**

product description (page 1)



See-saw construction: stainless steel
See-saw spring:
special spring wire Ø 20 mm
Seat plate: high pressure laminate 20 mm

including ground anchorage

Please note

The soil characteristics of the impact area surrounding the equipment must have an appropriate level of shock absorption corresponding to a free height of fall of at least 600 mm (according to EN 1176-6).

For an easy level installation into synthetic surfacing, a tailor-made anchorage is available at extra charge (item no. 109219). With a temporary deinstallation of the playing equipment, the opening in the ground can be covered by an appropriate panel made from HPL.

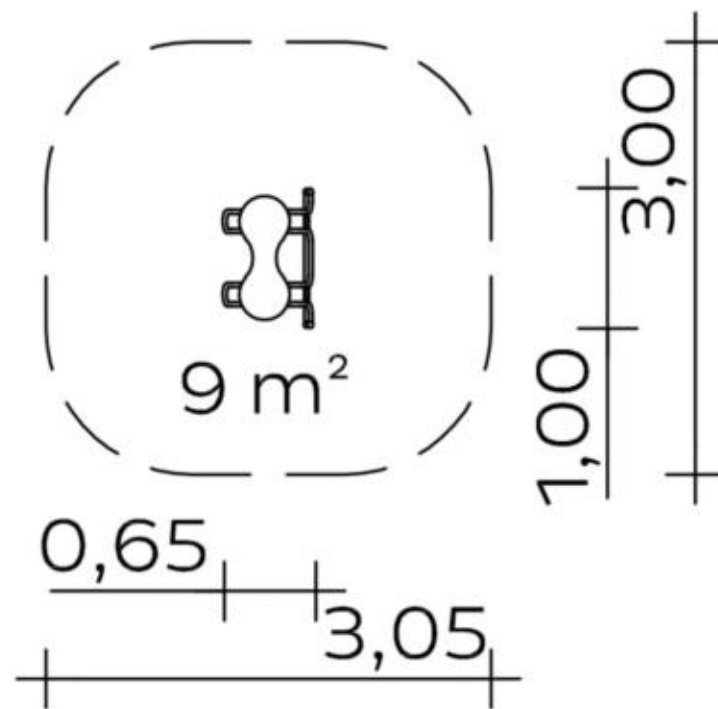
play equipment

Spring see-saw

item number

044251000
<https://kaiser-kuehne.com/products/?lang=en>

product data



(without scale)

installation

play equipment [m]	l	1,00
	w	0,65
	h	0,75
minimum space [m]	l	3,05
	w	3,00
	h	0,75
impact area [m²]		9,00
free height of fall [m]		0,50
number of mechanics		0
assembly time [hrs]		0
lifting device		no
single weight [kg]		0
total weight [kg]		55

foundations

l [m]	w [m]	h [m]	vol [m³]	qty
1,30	0,80	0,10	0,104	1
			0,104	1

usage

areas of use	public playgrounds
activities	motion activity
age groups	2+
number of users	3

inclusion

Meeting opportunity	Individual games
Functional play	Balancing
Group games	Coordination

play equipment
item number

Spring see-saw
044251000

variants

17671 *Classic*



17672 *City*



28344 *Aloha*



28345 *Beach*



28346 *Coral*



28347 *Ice Palace*



28348 *Jungle*



28349 *Mermaid*



28350 *Nature*



28351 *Ocean*



28352 *Pirate*



28353 *Safari*



28354 *Sky*



28355 *Sun*



28356 *Sunny Day*



play equipment

Spring see-saw

item number

044251000

variants

28357 *Sweden*

