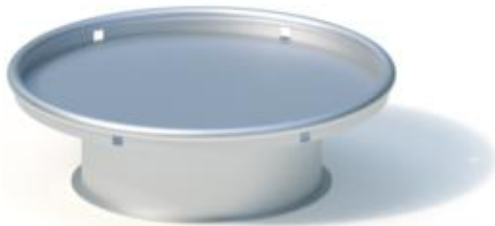


play equipment

**Mixing plate (0,25)**

item number

**033450000****product description** (page 1)

Welded structure made of stainless steel with six water outlets. Sheet metal thickness: min. 2 mm/ tube Ø 38 mm. Anchorage by means of ring-shaped bottom flanges.

At extra charge, there are appropriate ring-shaped concrete foundations (015165) for flange fastening and concrete form blocks (015170) for masonry works to compensate different levels or for a safe installation with loose fall protection surfacing (sand, gravel etc.)

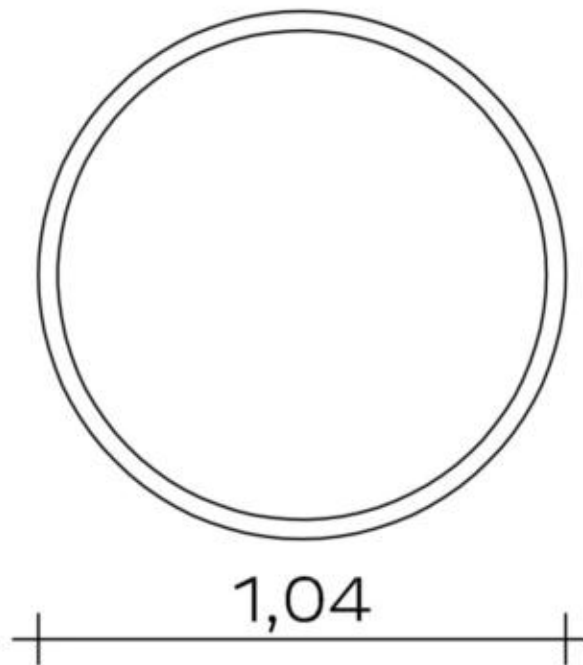
play equipment

## Mixing plate (0,25)

item number

**033450000**
<https://kaiser-kuehne.com/products/?lang=en>

### product data



(without scale)

### installation

|                         |   |      |
|-------------------------|---|------|
| play equipment [m]      | l | 1,04 |
|                         | w | 1,04 |
|                         | h | 0,32 |
| minimum space [m]       | l | 4,04 |
|                         | w | 4,04 |
|                         | h | 0,32 |
| impact area [m²]        |   | 0,00 |
| free height of fall [m] |   | 0,25 |
| number of mechanics     |   | 0    |
| assembly time [hrs]     |   | 0    |
| lifting device          |   | no   |
| single weight [kg]      |   | 0    |
| total weight [kg]       |   | 40   |

### usage

|              |                    |
|--------------|--------------------|
| areas of use | public playgrounds |
| activities   |                    |
| age groups   |                    |

### inclusion

### foundations

| l [m] | w [m] | h [m] | vol [m³] | qty |
|-------|-------|-------|----------|-----|
|       |       |       | 0,000    | 0   |

play equipment

## **Mixing plate (0,25)**

item number

**033450000**

### **variants**

17051 *Classic*

