

play equipment

## **Water valve**

item number

**033322000**

**product description** (page 1)



Welded structure made of stainless steel with locking conical stopper made of rubber. For installation in individual ground modelling to dam, regulate or divert water flow.

Stainless steel construction with lockable rubber cone closure. For installation with individual floor modelling for accumulating, regulating or diverting water.

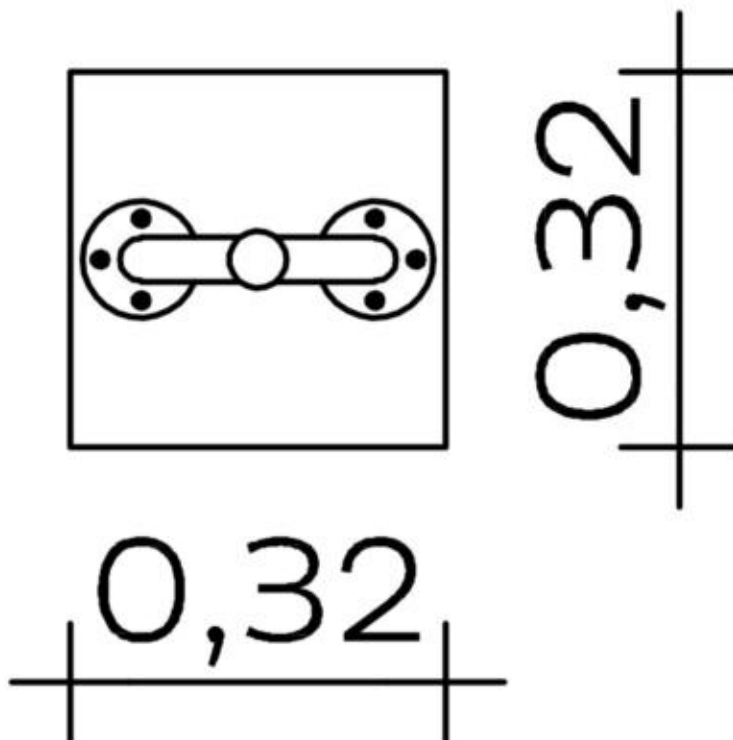
play equipment

## Water valve

item number

**033322000**
<https://kaiser-kuehne.com/products/?lang=en>

### product data



(without scale)

### installation

play equipment [m]	l	0,32
	w	0,32
	h	0,30
minimum space [m]	l	3,32
	w	3,32
	h	0,30
impact area [m²]		0,00
free height of fall [m]		0,00
number of mechanics		0
assembly time [hrs]		0
lifting device		no
single weight [kg]		0
total weight [kg]		5

### usage

areas of use	public playgrounds
activities	manual activity
age groups	3+
number of users	1

### inclusion

### foundations

l [m]	w [m]	h [m]	vol [m³]	qty
0,40	0,40	0,30	0,048	1
			0,048	1

