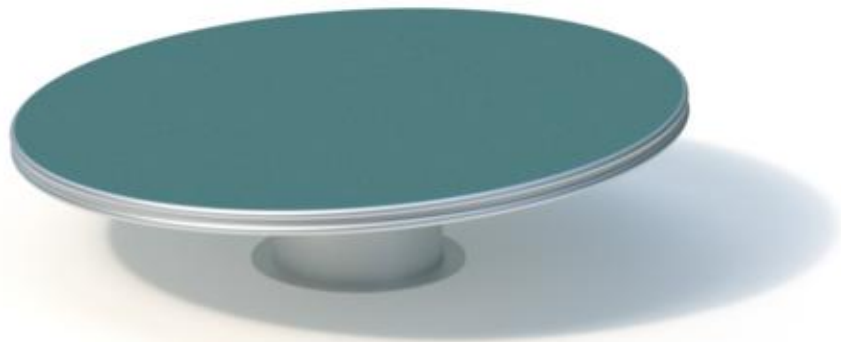


play equipment      **Dutch disc (2,50)**  
item number        **043525000**

**product description**      (page 1)



Rotating floor: stainless steel / rubber, plane bottom side  
Roller bearing: tamper-proof and dirt-protected  
The disc is anchored by means of a ring-shaped flange for concrete-cast embedding.

Please keep in mind that shock-absorbing surfacing material corresponding to the standard EN 1176-1 as well as „synthetic fall protection“ are admissible. Within the scope of maintenance, the characteristics of fall protection of the material must not decrease due to compaction or abrasion; with synthetic fall protection, due to reduced surface smoothness, a potential health hazard for ligaments or sinews must be calculated.

Please note:

Upon request, the ring-shaped ground anchorage can be delivered in advance to facilitate foundation works in good time and to ensure a proper concrete setting before installation of bearing and disc.

If an advanced delivery is favoured, please give us a brief feedback and the delivery address when placing the order.

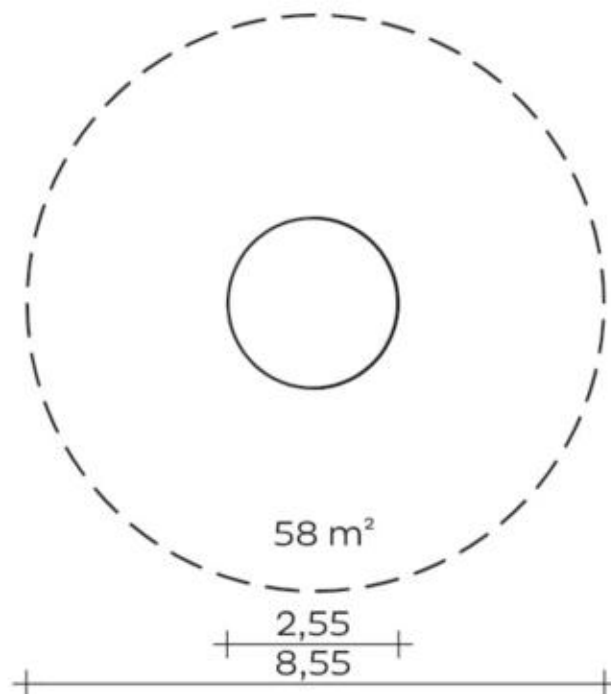
play equipment

## Dutch disc (2,50)

item number

**043525000**
<https://kaiser-kuehne.com/products/?lang=en>

### product data



(without scale)

### installation

play equipment [m]	l	2,55
	w	2,55
	h	0,70
minimum space [m]	l	8,55
	w	8,55
	h	0,70
impact area [m²]		58,00
free height of fall [m]		0,70
number of mechanics		2
assembly time [hrs]		1
lifting device		yes
single weight [kg]		410
total weight [kg]		590

### foundations

l [m]	w [m]	h [m]	vol [m³]	qty
0,90	0,90	0,80	0,648	1
			0,648	1

### usage

areas of use	public playgrounds
activities	motion activity
age groups	6+
number of users	9

### inclusion

Meeting opportunity	Individual games
Functional play	Speed
Balancing	Group games
Coordination	

play equipment

**Dutch disc (2,50)**

item number

**043525000**

**variants**

17641 *Classic*

